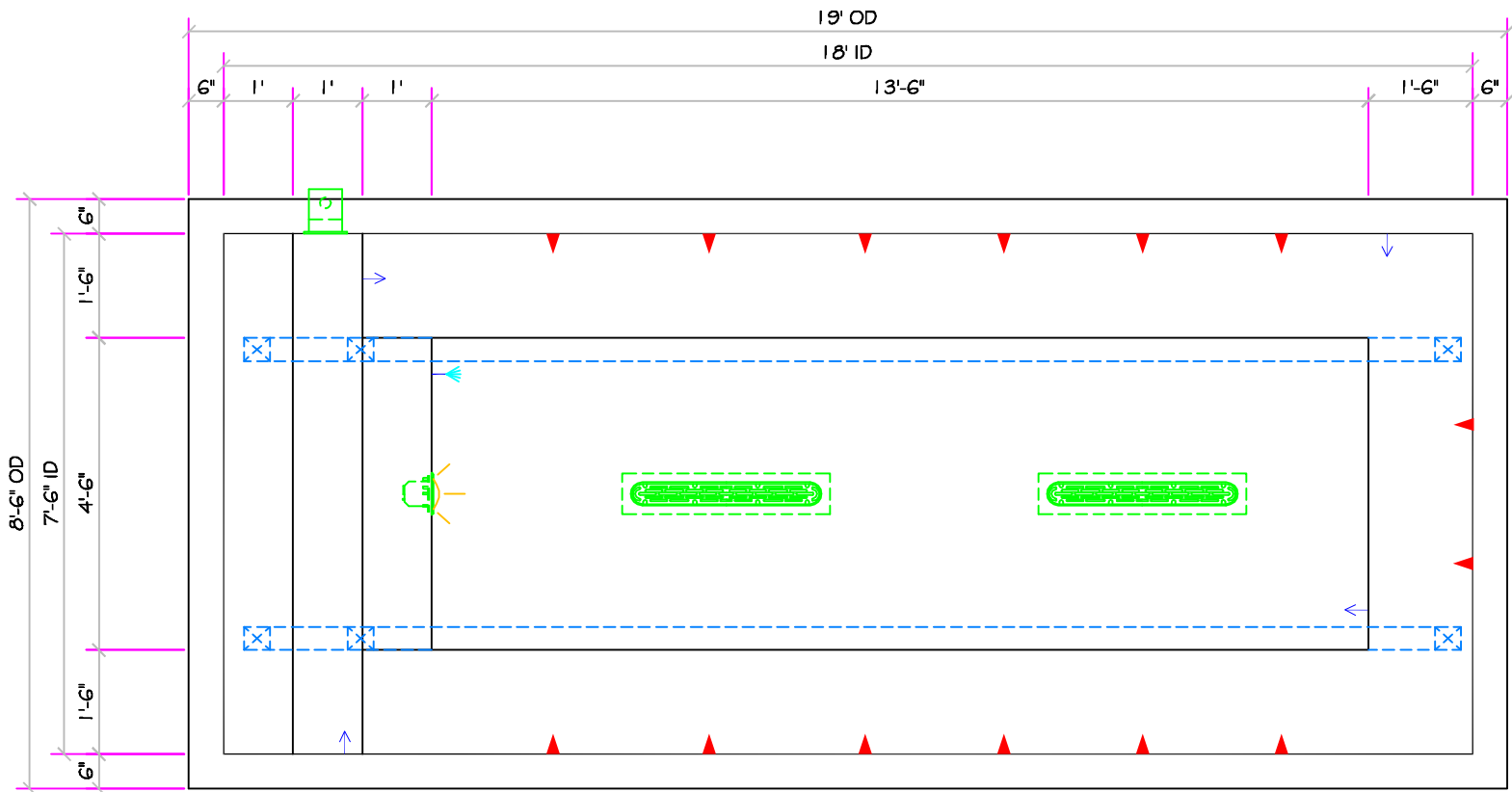


SPECIFICATIONS	
DRY WEIGHT:	3600
TOTAL WEIGHT:	25489
WATER:	2625
VOLUME:	351
WEIGHT:	21889
SURFACE AREA:	135 SQ. FT.
IAPMO#:	1138
FDA#:	2030305

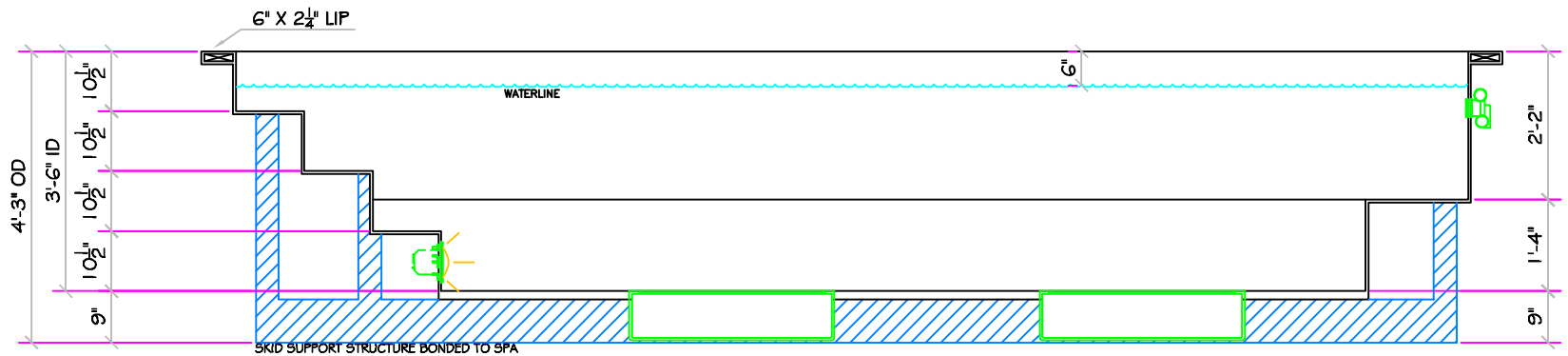
<b>SKID SUPPORT STRUCTURE* BONDED TO SPA</b>	
*SKIDS SUPPLIED BY NESPA	
<b>LIGHT NICHE</b>	
SPA BRIGHT, 120 V, 100 WATT, 50 CORD, U.L. APPROVED	
<b>SKIMMER</b>	
HAYWARD SP-1084FVE SURFACE SKIMMER W/ EQUALIZER NSF APPROVED	
<b>MAIN DRAIN</b>	
AquaStar 32CDFLFR, 32" Channel Drain, Approved Max Flow Rate/Floor = 236 GPM @ 3.4 fpm, Wall = 136 GPM @ 1.9 fpm, V.G.B. Approved Safety Drain	
<b>SIDEWALL SUCTION</b>	
Paramount SDX 107 HIGH FLOW SAFETY DRAIN, Area of Opening = 43.201 in <sup>2</sup> , Velocity @ 200 GPM = 1.425 fpm, V.G.B. Approved Safety Drain	
<b>JET</b>	
HYDRO INLETS 1-1/2" WATER - 1-1/2" AIR HYDROAIR #10-3500 COMPLIES W/ ANSI CODE ASME A112.19.8-07 UL APPROVED	
<b>RETURN</b>	
INLET FITTINGS 1-1/2" WALL TYPE W/EYEBALL HYDROAIR #10-3500 COMPLIES W/ ANSI CODE ASME A112.19.8-07 UL APPROVED	
<b>FILL</b>	
INLET FITTINGS 1-1/2" WALL TYPE W/EYEBALL HYDROAIR #10-3500 COMPLIES W/ ANSI CODE ASME A112.19.8-07 UL APPROVED	



## 18' LEGACY

ALL TILED SPA - Fits 13 Adults

**\* Complies with V.G.B.  
Pool and Spa Safety Act**



\*ALL DIMENSIONS SUBJECT TO 1/4" TOLERANCES\*

Oct 12, 2009 - 11:20am

These drawings, concepts, and details contained herein are the original proprietary designs of NESPA ENTERPRISES, developed over many years of experience in the pool and spa industry and as such are protected by the copyright laws of the United States Government. Reproduction of any of the above without written permission to do so by NESPA ENTERPRISES, is illegal.

### NESPA ENTERPRISES INC.

2800 Richter Ave. Ste. C Oroville, CA 95966

Office: (530) 534-9910

Fax: (530) 534-9915

E-Mail: [sales@tiledspas.com](mailto:sales@tiledspas.com) Web Site: [www.tiledspas.com](http://www.tiledspas.com)



SIZE  
A

DWG NAME

NESPA\_IAPMO\_MODELS

DWG TYPE

18' LEGACY

SCALE 3/8" = 1'

DATE 10/12/2009

SHEET

PAGE 1 OF 1