

Installation Instructions
Vanishing Lid Trays
Construction Methods with Tile or Masonry

Table of Contents

1. Tools and Equipment	1
2. Vanishing Lid Trays	3
2.1 Materials for Finished Surface with Substrate	3
2.2 Materials for Finished Surface without Substrate	3
2.3 Typical Construction Method	4
2.4 Constructing On Brackets.....	5
3. No Tray Mounting Method	5
3.1 Materials	5
3.2 Construction Method	5

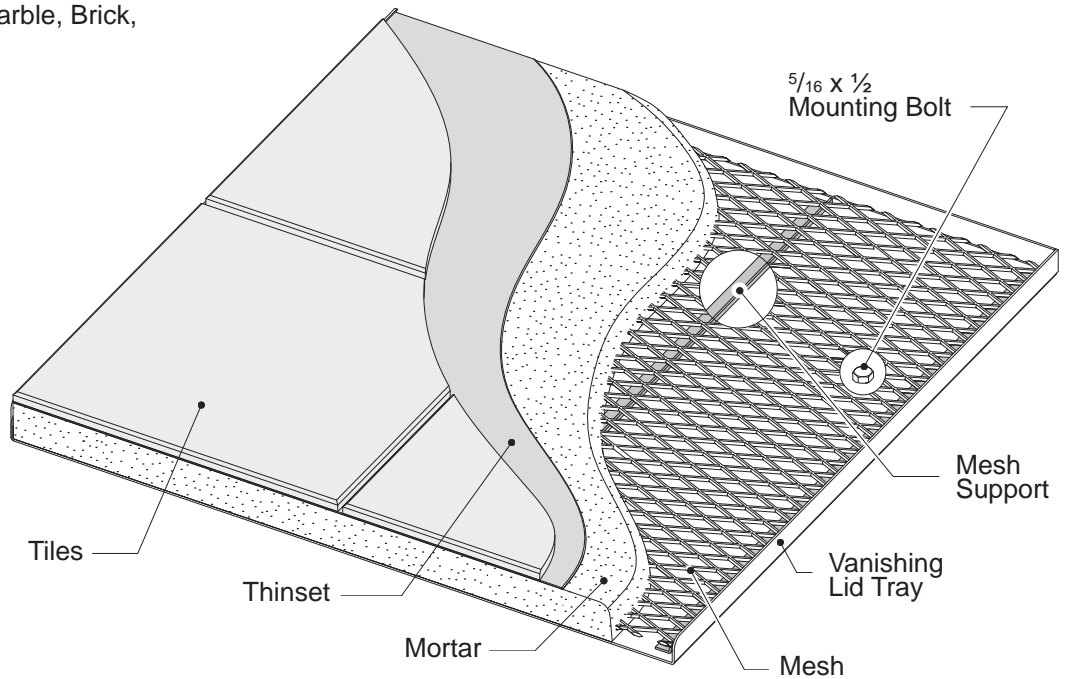
1. Tools and Equipment

- Measuring Tape
- Tile Cutter
- Rubber Float
- Caulking Gun
- Level
- 1/4" or 3/8" Notched Trowel

VANISHING LID TRAY WITH MESH SUPPORTS

Recommended Applications

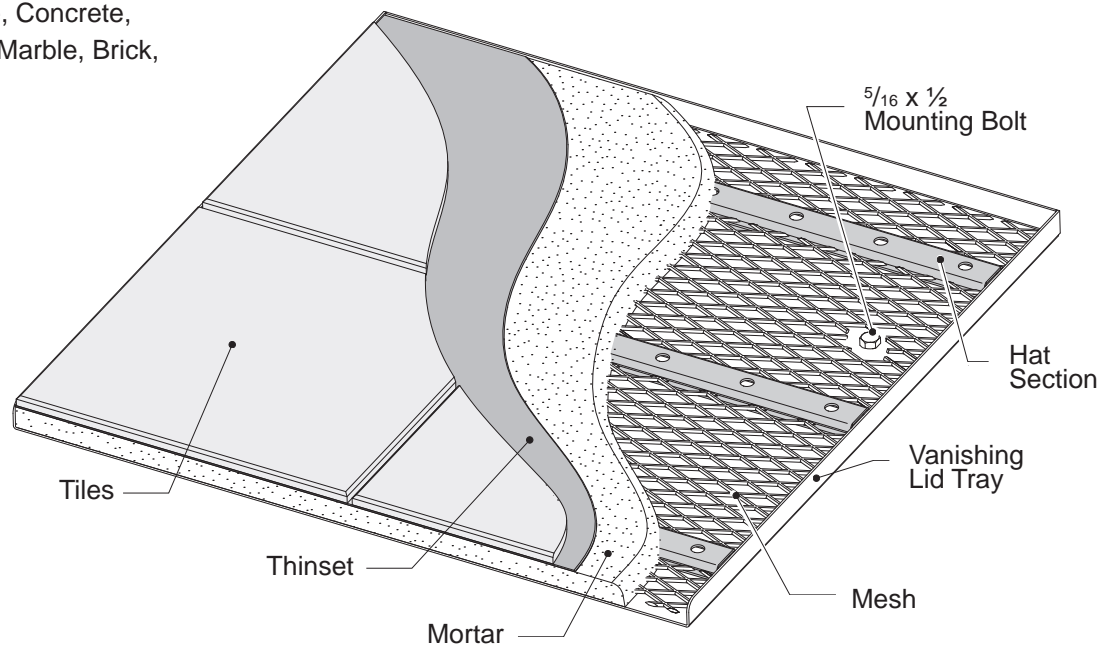
- For materials with substantial structural rigidity.
- Tile, Cast Stone, Concrete, Slate, Cultured Marble, Brick, etc.



VANISHING LID TRAY WITH HAT SECTIONS

Recommended Applications

- For materials requiring extra rigidity.
(Softer or thinner materials.)
- Tile, Cast Stone, Concrete, Slate, Cultured Marble, Brick, etc.



2. Vanishing Lid Trays

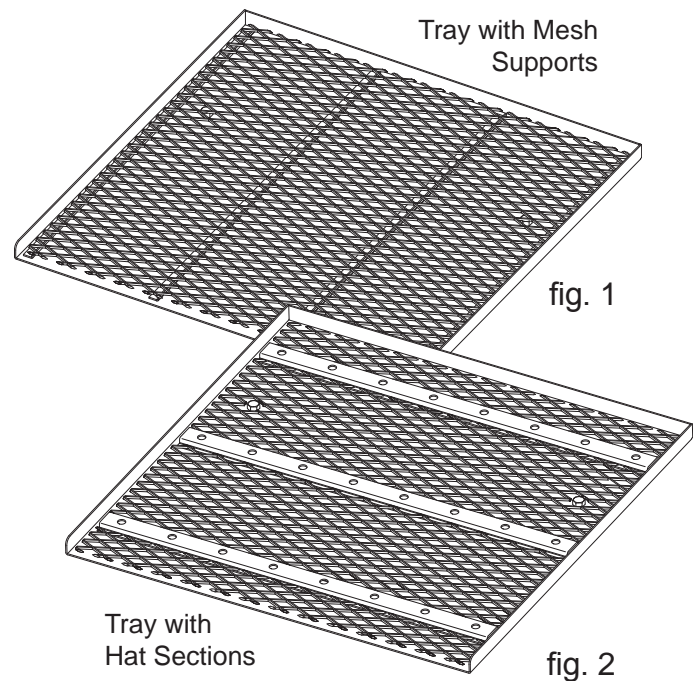
Note: It is good installation practice to plan the Vanishing Lid Tray size around the size of the tiles to minimize tile cutting and provide the deck with a more uniform appearance. Maximum Recommended Tray size is 24" x 24" for ease of handling.

Note: Plan accordingly if the final position of the finish surface is to line up with the Deck surface.

Note: Material limitations make it difficult for the trays to fit tightly against each other at the joints. Plan for small gaps at each joint. ($\frac{1}{16}$ " gaps minimum) This will affect the overall length of the Vanishing Lid system.

Note:

- Use (170060) Adjustable Lid Brackets 12" for Tray Widths 12" - 18"
- Use (170061) Adjustable Lid Brackets 18" for Tray Widths 18" - 24".



2.1 Materials for Finished Surface with Substrate

2.1.1 Vanishing Lid Tray with Mesh Supports (fig. 1) or Hat Sections (fig. 2)

2.1.2 Mortar Mix substrate. (Concrete Mixture may be used as a substitute for Mortar Mix providing the size of the aggregate is small enough to fit through and under the Mesh.)

2.1.3 Thinset Mortar

Selection Recommendations:

- Avoid using organic mastics adhesives to install ceramic tiles.
- Use a gray thinset mortar if you plan to use a dark colored grout. Use a white thinset mortar if you plan to use a light colored grout.
- Most thinset mortar (Multi Purpose and polymer modified thinsets) is adequate for installing the majority of fired clay ceramic tiles on a cement substrate.
- Fully vitrified porcelain tiles should be installed using a latex modified thinset or basic (non-modified) thinset mixed with an acrylic latex additive.
- Use a sanded thinset mortar.
- Acrylic latex admixture can be used to increase the mechanical bond of the thinset. Check the manufacturers specifications before using.

2.1.4 Typical materials with Substrate include, Tiles, Slate, Thin Stone, Brick Veneer, or other finish surface material.

2.2 Materials for Finished Surface without Substrate

2.2.1 Vanishing Lid Tray with Mesh Supports (fig 1) or Hat Sections. (fig 2)

2.2.2 Typical materials that do not use a substrate include, Concrete, gunite, or like material with aggregate material small enough to fit through and under the Mesh.

2.3 Typical Construction Method

2.2.1 Create a forming wall for the front face of Vanishing Lid Tray. (fig 3)

Note: This front face will be visible from inside the pool. If you plan to use a finish surface or material on this face, plan accordingly. (fig 4)

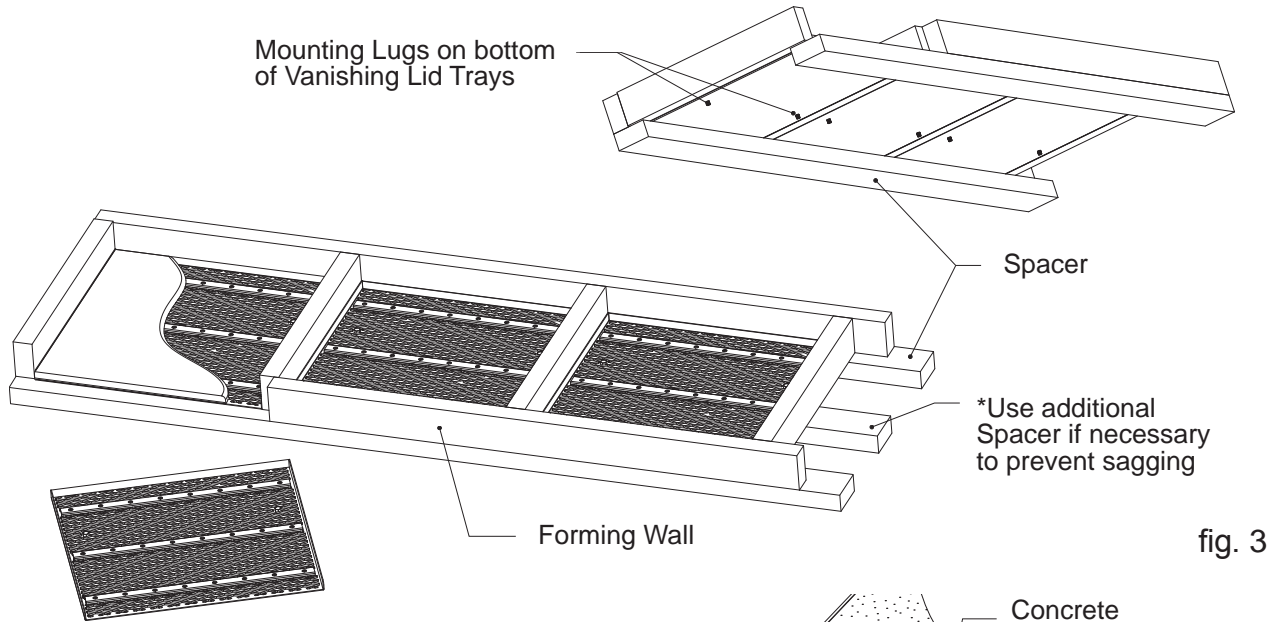
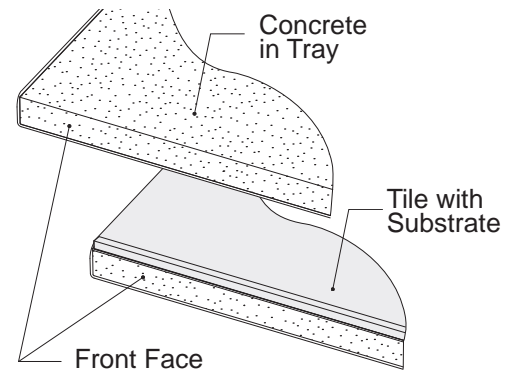


fig. 3

- 2.2.2 Fill the Tray with finish material or substrate to the desired level.
- 2.2.3 Level using a rubber float or other leveling tool.
- 2.2.4 Refer to the material or substrate manufacturers specifications for required set time. (For tile and the like, continue to Section 2.2.5)
- 2.2.5 After the substrate (Mortar Mix) has set, cut and place tiles to ensure the fit is correct.
- 2.2.6 Apply Thinset to the set Mortar using a minimum of $\frac{1}{4}$ " ($\frac{3}{8}$ " recommended for most jobs) thick mortar bed using a square notch trowel. (fig 5)
Manufacturers have varying methods for mixing and applying their product. These instructions should always be carefully followed.



In most cases the front face of Vanishing Lid Tray is visible from inside of pool. Plan accordingly if you desire a finished surface.

fig. 4

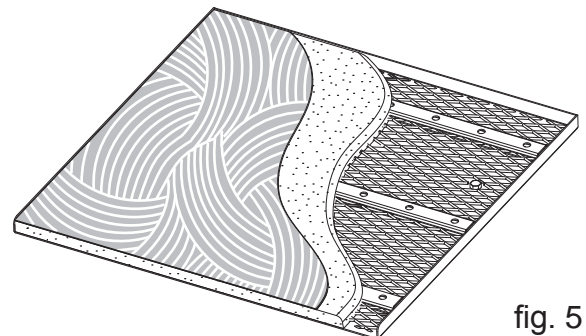
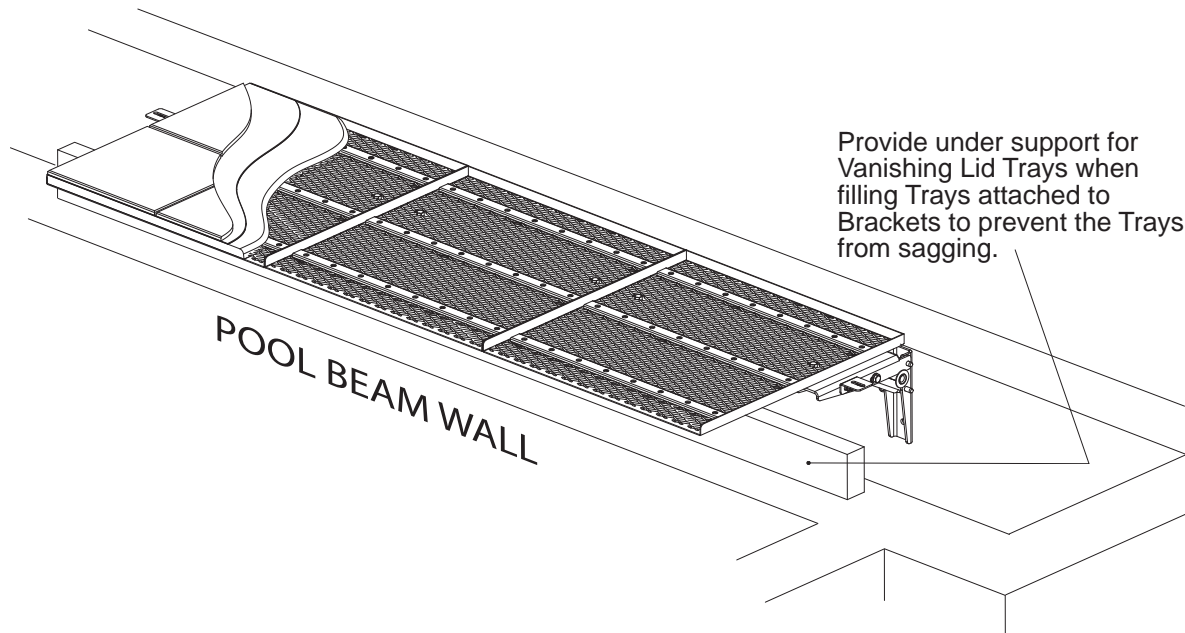


fig. 5

2.4 Constructing on Brackets

- 2.4.1 When constructing Vanishing Lid Trays attached to Brackets, such as a tile application, under support may be required to prevent sagging until the materials are set. (fig 6)



3. No Tray Mounting Method

fig. 6

3.1 Materials

- 3.1.1 The No Tray method is intended for use in applications where the material has sufficient strength and rigidity to meet the Uniform Building Code requirements for cantilevered flooring and/or local codes. Consult your material supplier for further guidance. Avoid porous, sedimentary, conglomerate, and the like materials (sandstone, slate, etc.). These types of materials do not bond well.
- 3.1.2 Cover Pools recommends Liquid Nails® Ultra Duty Poly (LN-950). Ultra Duty Poly is manufacturer recommended for concrete, subfloors, tileboard, granite, marble, ceramics, plastic, vinyl, and brick. Consult your material supplier for further guidance.

3.2 Construction Method

- 3.2.1 Cut material into slabs of desired size. Maximum permissible Bracket spacing is 24".
- 3.2.2 Replace the (170058) Adjustable Bracket Lid Clip with the (170092) Adjustable Bracket Adhesive Plate. Make certain the Adjustable Bracket Plates are level. (fig. 7)
- 3.2.3 Cover the surface area of the (170092) Adjustable Bracket Adhesive Plate with a moderate (not less than 1/16" thick) amount of Ultra Duty Poly (or equivalent). (fig. 8) DO NOT use adhesive within 1/2" of the inside edge of the Adhesive Plate to avoid overspill.
- 3.2.4 Place slabs onto the Adjustable Bracket Adhesive Plate as soon as possible after applying the adhesive. Care should be taken to make sure that excess adhesive does not drip into the Mechanism Box or onto the pool cover.
- 3.2.5 Allow a minimum of 24 hours for the adhesive to set before walking on it.

