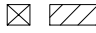


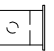



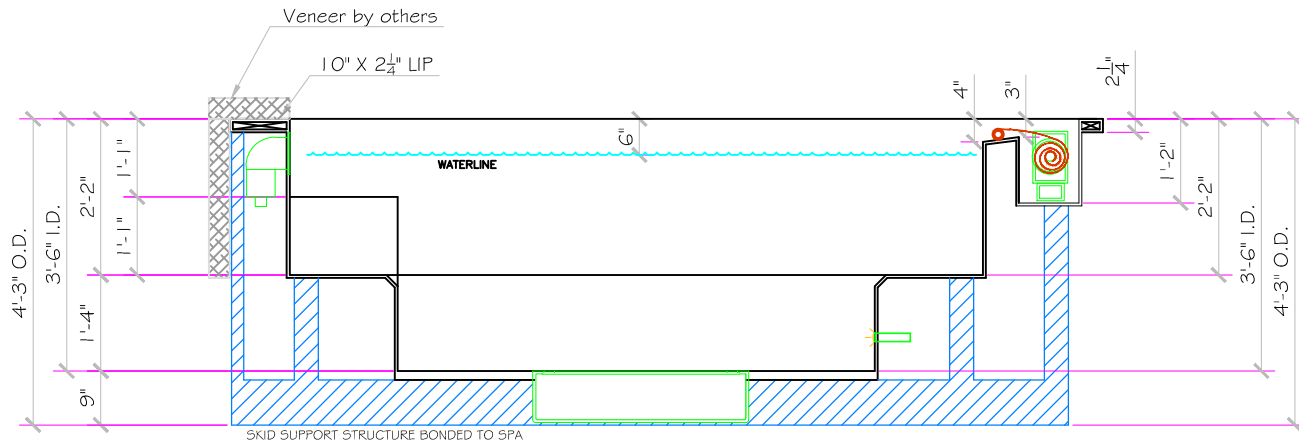
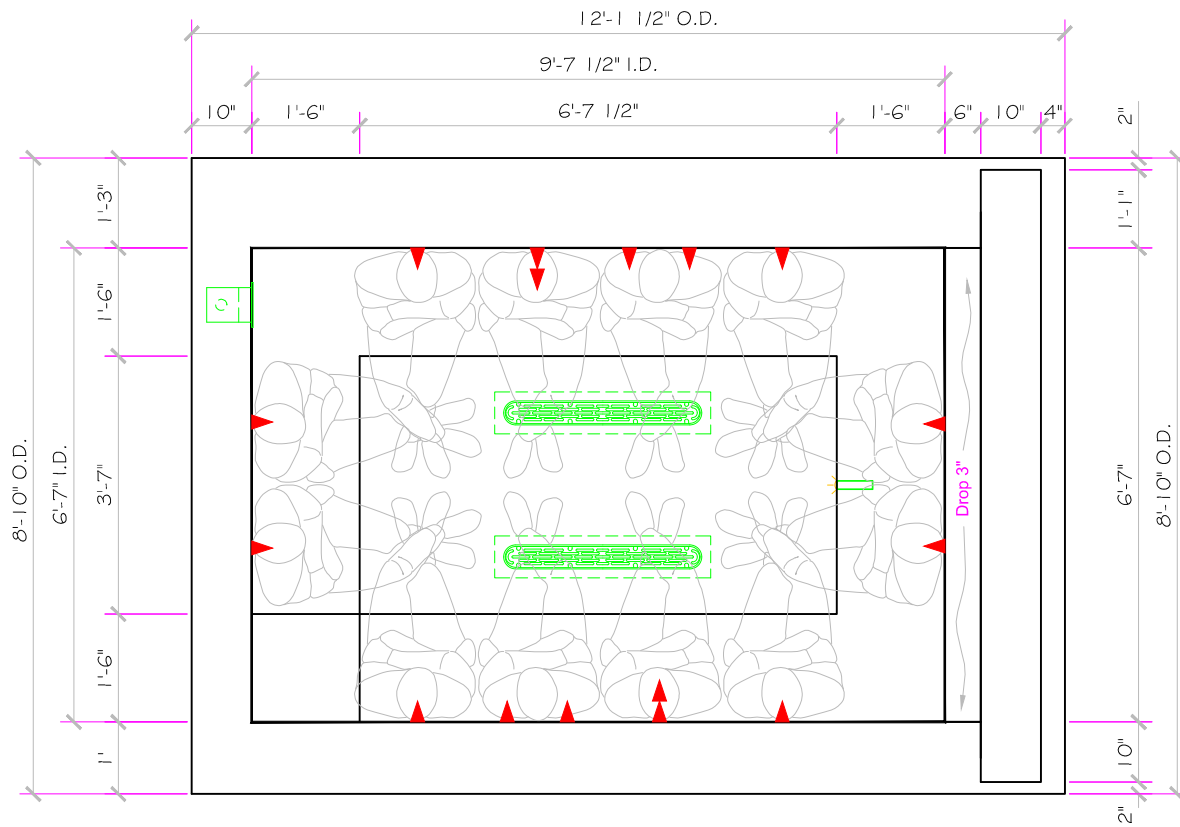


SPECIFICATIONS	
DRY WEIGHT:	2800 LBS.
TOTAL WEIGHT:	13277 LBS.
WATER:	1256.6 GAL.
VOLUME:	168 Cu.Ft.
WEIGHT:	10477 LBS.
SURFACE AREA:	63 SQ. FT.
IAPMO#:	1138
FDA#:	2030305

<b>SKID SUPPORT STRUCTURE* BONDED TO SPA</b>	
	*SKIDS SUPPLIED BY NESPA
<b>LIGHT NICHE</b>	
	LED NEXXUS LIGHT, U.L. APPROVED
<b>MAIN DRAIN</b>	
	AquaStar 32CDFLFR, 32" Channel Drain, Approved Max Flow Rate: Floor = 236 GPM @ 3.4 fps Wall = 136 GPM @ 1.9 fps V.G.B Approved Safety Drain
<b>SKIMMER</b>	
	FRONT ACCESS SKIMMER NSF APPROVED
<b>JET</b>	
	HYDRO INLETS 1-1/2" WATER - 1-1/2" AIR HYDROAIR #10-3100 COMPLIES W/ ANSI CODE ASME A112.19.8-07 UL APPROVED
<b>RETURN</b>	
	INLET FITTINGS 1-1/2" WALL TYPE W/ EYEBALL HYDROAIR #10-3500 COMPLIES W/ ANSI CODE ASME A112.19.8-07 UL APPROVED
<b>FILL</b>	
	INLET FITTINGS 1-1/2" WALL TYPE W/ EYEBALL HYDROAIR #10-3500 COMPLIES W/ ANSI CODE ASME A112.19.8-07 UL APPROVED



**APPROVED**

7/19/2013 9:16:42 AM

\*ALL DIMENSIONS SUBJECT TO 1/4" TOLERANCES\*

These drawings, concepts, and details contained herein are the original proprietary designs of NESPA ENTERPRISES, developed over many years of experience in the industry and as such are protected by the copyright laws of the United States Government. Reproduction of any of the above without written permission to do so by NESPA ENTERPRISES, is illegal.

**NESPA ENTERPRISES INC.**

2800 Richter Ave. Ste. C Oroville, CA 95966

Office: (530) 534-9910

Fax: (530) 534-9915

E-Mail: [sales@tiledspas.com](mailto:sales@tiledspas.com) Web Site: [www.tiledspas.com](http://www.tiledspas.com)



If printing as a PDF:

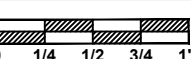
Page Scaling: None

DWG NAME

CPS\_TAMER

SCALE

3/8" = 1'



DATE

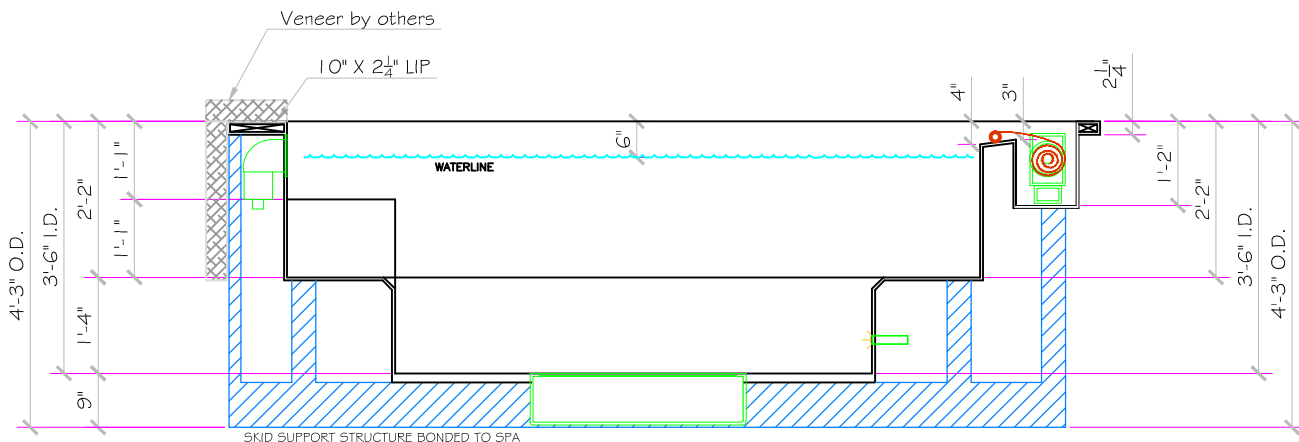
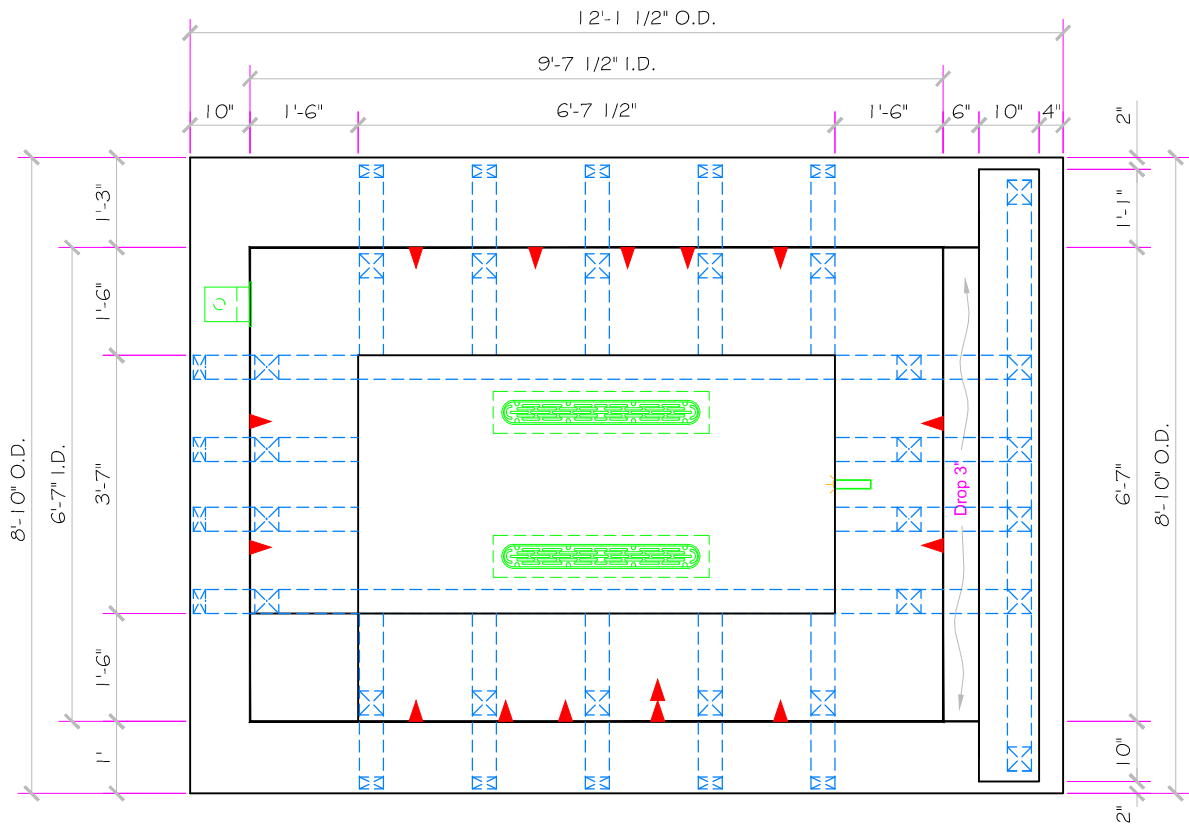
7/19/2013

DWG TYPE

SD

SHEET

PAGE 1 OF 5



**APPROVED** 7/19/2013 9:16:43 AM

\*ALL DIMENSIONS SUBJECT TO 1/4" TOLERANCES\*

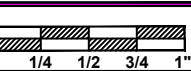
These drawings, concepts, and details contained herein are the original proprietary designs of NESPA ENTERPRISES, developed over many years of experience in the industry and as such are protected by the copyright laws of the United States Government. Reproduction of any of the above without written permission to do so by NESPA ENTERPRISES, is illegal.

**NESPA ENTERPRISES INC.**  
 2800 Richter Ave. Ste. C Oroville, CA 95966  
 Office: (530) 534-9910 Fax: (530) 534-9915  
 E-Mail: [sales@tiledspas.com](mailto:sales@tiledspas.com) Web Site: [www.tiledspas.com](http://www.tiledspas.com)



If printing as a PDF:  
 Page Scaling: None

SCALE  
 3/8" = 1'



DWG NAME  
 CPS\_TAMER

DATE  
 7/19/2013

DWG TYPE  
 Layout  
 SHEET  
 PAGE 2 OF 5

DalTile Glass Horizons - Atlantic Blend  
 Random Linear Mosaic GH11

- #1 - FIELD TILE: \_\_\_\_\_
- #2 - WATERLINE (optional): \_\_\_\_\_
- #3 - BENCH & STEP EDGES (optional): \_\_\_\_\_
- #4 - TILED LIP (optional): By Others

Date: \_\_\_\_\_

Approval: \_\_\_\_\_

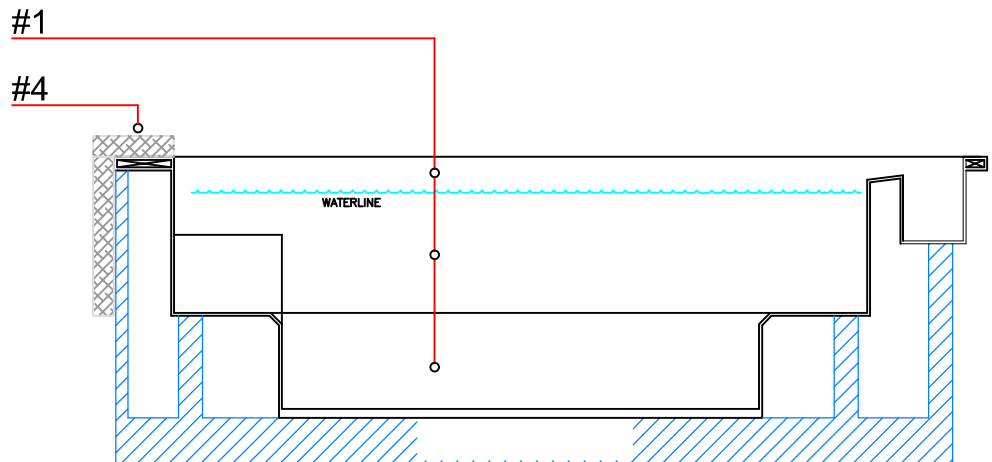
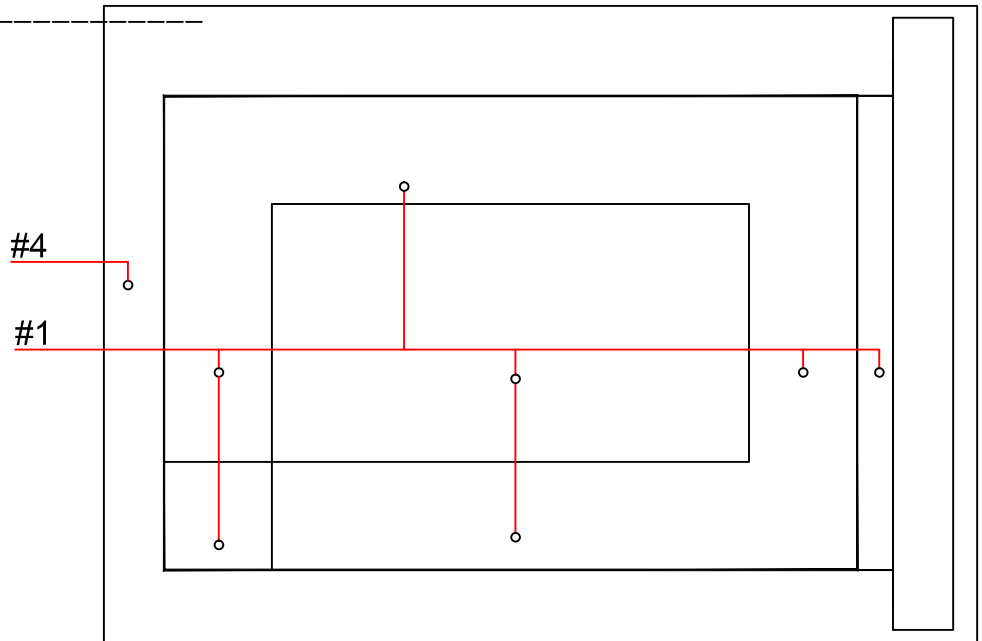
#1 - GROUT: \_\_\_\_\_

#2 - GROUT: \_\_\_\_\_

#3 - GROUT: \_\_\_\_\_



DalTile Glass Horizons - Atlantic Blend  
 Random Linear Mosaic GH11



**APPROVED**

7/19/2013 9:16:44 AM

\*ALL DIMENSIONS SUBJECT TO 1/4" TOLERANCES\*

**NESPA ENTERPRISES INC.**  
 2800 Richter Ave. Suite C Oroville, CA 95966  
 Office: (530) 534-9910 Fax: (530) 534-9915  
 E-Mail: [sales@tiledspas.com](mailto:sales@tiledspas.com) Web Site: [www.tiledspas.com](http://www.tiledspas.com)



If printing as a PDF:  
 Page Scaling:

SCALE  
 3/8" = 1'  
 0 1/4 1/2 3/4 1"

DWG TYPE  
 Tile

DWG NAME  
 CPS\_TAMER

DATE  
 7/19/2013

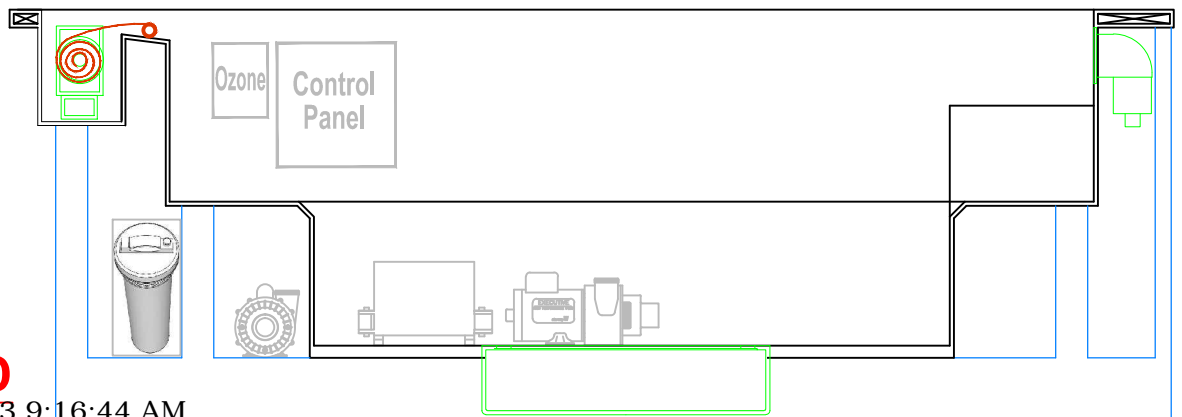
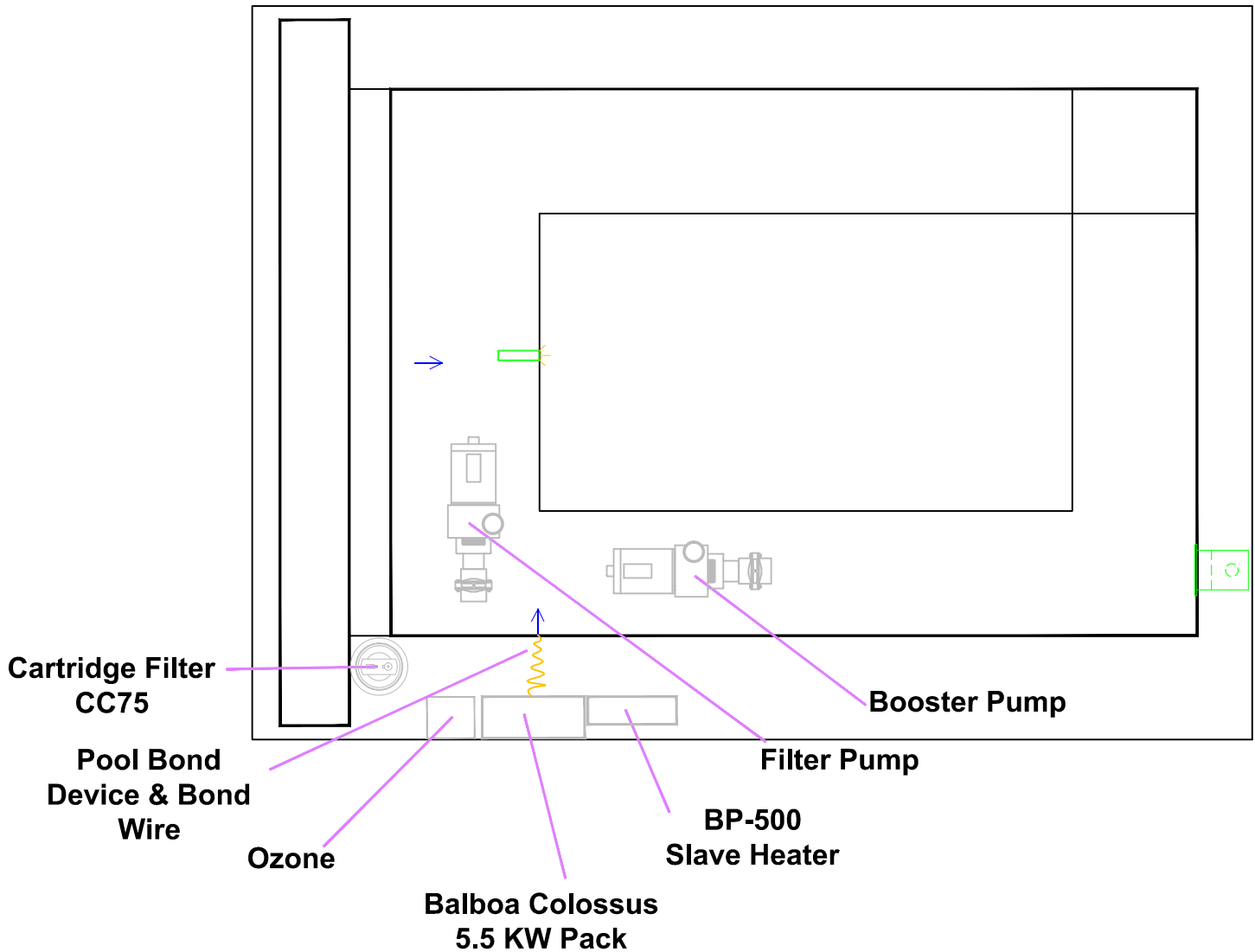
SHEET  
 PAGE 3 OF 5

These drawings, concepts, and details contained herein are the original proprietary designs of NESPA ENTERPRISES, developed over many years of experience in the industry and as such are protected by the copyright laws of the United States Government. Reproduction of any of the above without written permission to do so by NESPA ENTERPRISES, is illegal.

**NOTE: 1.) New Equipment location Power Requirements**

**A) Balboa Colossus 5.5 KW pack will need a 4 wire 230Volt 1 Ph, 60 Amp GFCI disconnect**

**B) The Balboa Slave Heater will need 30 Amp GFCI disconnect**



**APPROVED**

7/19/2013 9:16:44 AM

**NESPA ENTERPRISES INC.**  
 2800 Richter Ave. Suite C Oroville, CA 95966  
 Office: (530) 534-9910 Fax: (530) 534-9915  
 E-Mail: [sales@tiledspas.com](mailto:sales@tiledspas.com) Web Site: [www.tiledspas.com](http://www.tiledspas.com)

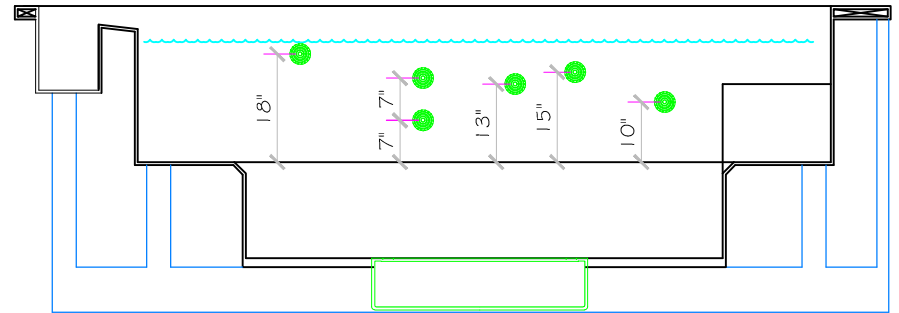
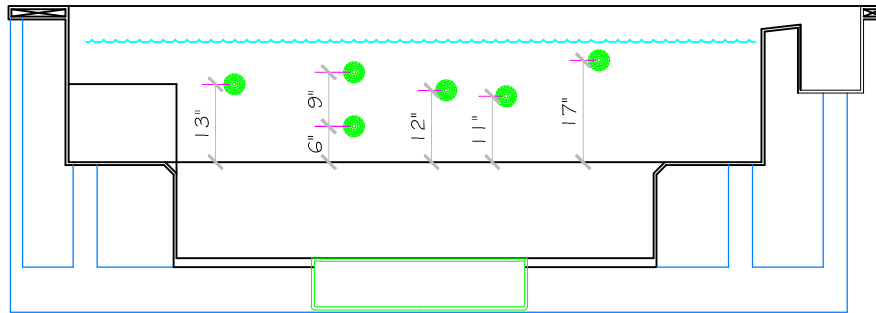


**If printing as a PDF:**  
 Page Scaling:   
 DWG NAME: CPS\_TAMER

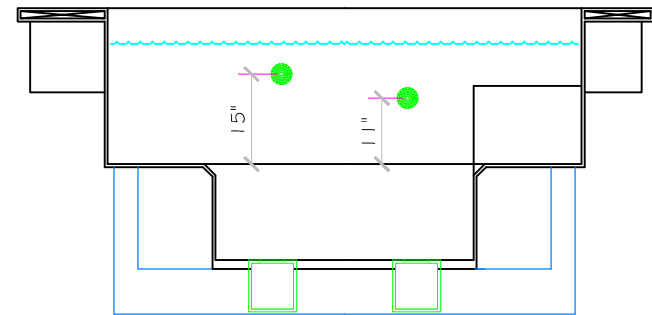
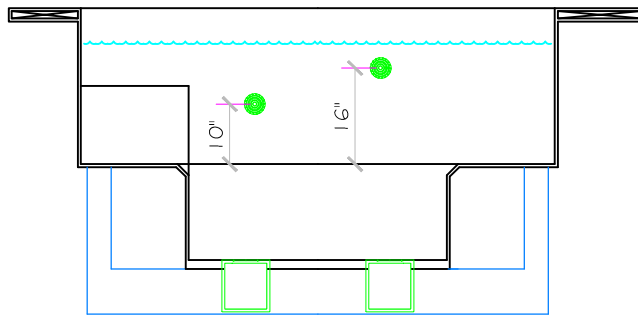
SCALE: 1/2" = 1'  
 DATE: 7/19/2013

DWG TYPE: Equipment  
 SHEET: PAGE 4 OF 5

These drawings, concepts, and details contained herein are the original proprietary designs of NESPA ENTERPRISES, developed over many years of experience in the industry and as such are protected by the copyright laws of the United States Government. Reproduction of any of the above without written permission to do so by NESPA ENTERPRISES, is illegal.



### Jet Detail



**APPROVED** 7/19/2013 9:16:45 AM

\*ALL DIMENSIONS SUBJECT TO 1/4" TOLERANCES\*

These drawings, concepts, and details contained herein are the original proprietary designs of NESPA ENTERPRISES, developed over many years of experience in the industry and as such are protected by the copyright laws of the United States Government. Reproduction of any of the above without written permission to do so by NESPA ENTERPRISES, is illegal.

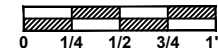
**NESPA ENTERPRISES INC.**  
 2800 Richter Ave. Ste. C Oroville, CA 95966  
 Office: (530) 534-9910 Fax: (530) 534-9915  
 E-Mail: [sales@tiledspas.com](mailto:sales@tiledspas.com) Web Site: [www.tiledspas.com](http://www.tiledspas.com)



If printing as a PDF:

Page Scaling: None

SCALE  
 3/8" = 1'



DWG NAME  
 CPS\_TAMER

DATE  
 7/19/2013

DWG TYPE  
 Jets  
 SHEET  
 PAGE 5 OF 5