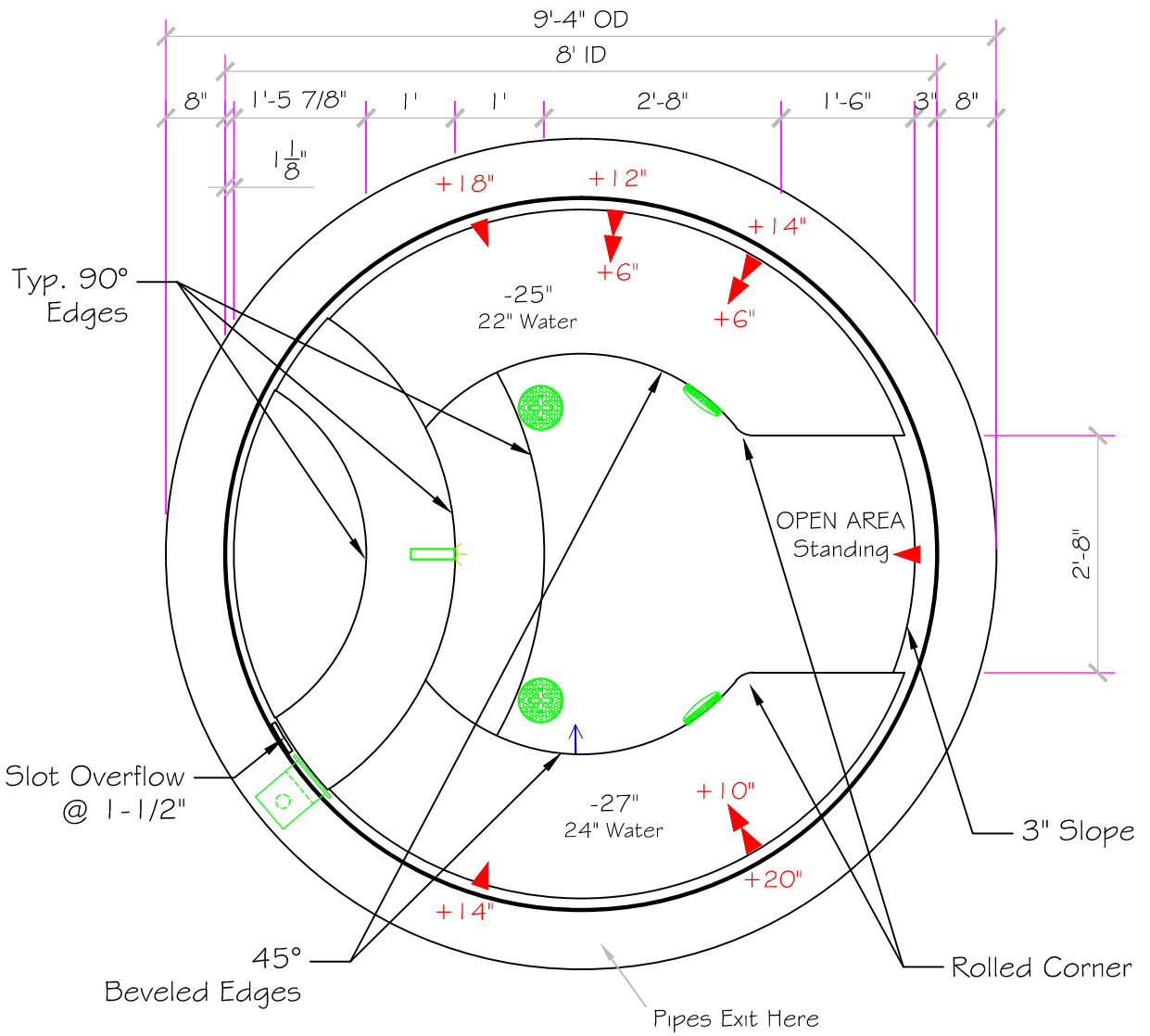
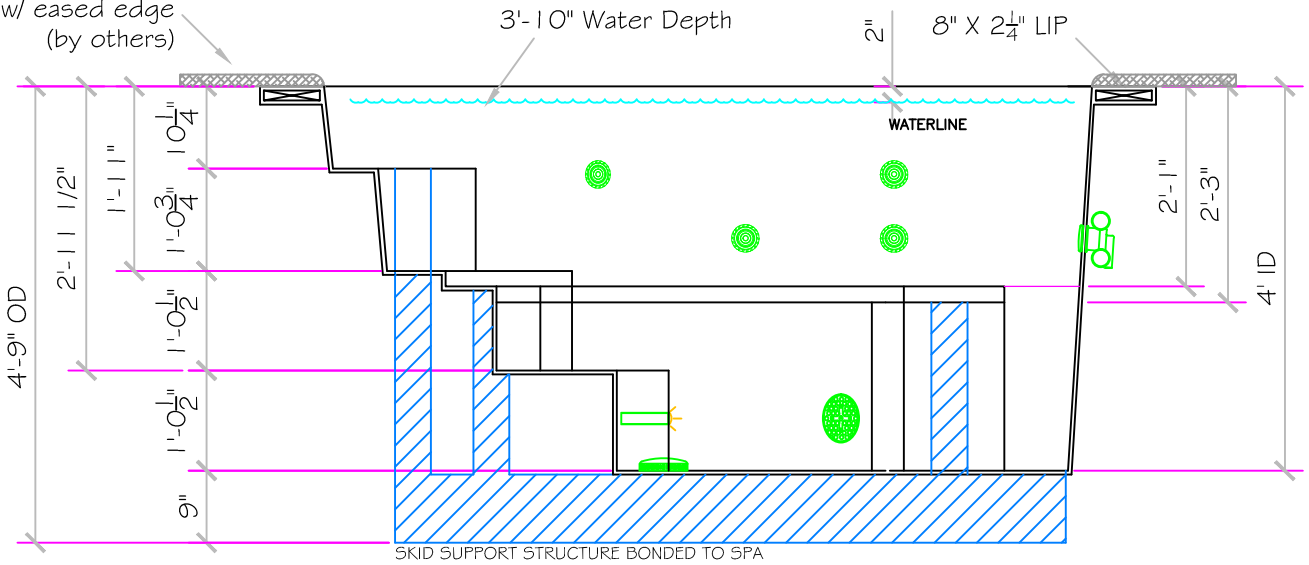


SPECIFICATIONS	
SHELL WEIGHT:	2300 LBS.
WATER WEIGHT:	5616 LBS.
TOTAL SHELL & WATER WEIGHT:	7916.2 LBS.
WATER VOLUME:	114 Cu.Ft.
MAX WATER GAL.:	853 GAL.
SURFACE AREA:	50.3 SQ. FT.
IAPMO#:	1138
FDA#:	2030305

<b>SKID SUPPORT</b> STRUCTURE BONDED TO SPA	
	*SKIDS SUPPLIED BY NESPA
<b>LIGHT NICHE</b>	
	White Nexus LED LIGHT U.L. APPROVED
<b>MAIN DRAIN</b>	
	6" Round Hockey Puck AquaStar 6HPHxxx Sumpless Suction Outlet Floor/Wall 224 GPM @ 6.3fpi Complies w/ ANSI Code ASME A112.19.8-2007 & VGB 2008
<b>SIDEWALL SUCTION</b>	
	6" Round Hockey Puck AquaStar 6HPHxxx Sumpless Suction Outlet Floor/Wall 224 GPM @ 6.3fpi Complies w/ ANSI Code ASME A112.19.8-2007 & VGB 2008
<b>SKIMMER</b>	
	FRONT ACCESS SKIMMER, NSF APPROVED
<b>JET</b>	
	HYDRO INLETS 1-1/2" WATER - 1-1/2" AIR HYDROAIR #10-5100 COMPLIES W/ ANSI CODE ASME A112.19.8-07 U.L. APPROVED
<b>RETURN</b>	
	INLET FITTINGS 1-1/2" WALL TYPE W/ EYEBALL HYDROAIR #10-3500 COMPLIES W/ ANSI CODE ASME A112.19.8-07 U.L. APPROVED
<b>FILL</b>	
	INLET FITTINGS 1-1/2" WALL TYPE W/ EYEBALL HYDROAIR #10-3500 COMPLIES W/ ANSI CODE ASME A112.19.8-07 U.L. APPROVED



18" X 1-1/2" Slate Coping w/ eased edge (by others)



7/22/2013 11:25:46 AM

All drawing dimensions supplied by **NESPA ENTERPRISES INC.** are for reference only. All CAD files were created using AutoCAD file (\*.dwg.) and were provided as a service to our customers using AutoCAD. Errors sometimes occur during this process and with software incompatibility upon opening a file. **NESPA ENTERPRISES INC.** and/or any authorized distributor of our products will not be held responsible for problems arising from files which have been converted and does not warranty the documents against deficiencies or typographical errors of any kind. We recommend that all measurements are verified with actual physical product before any custom fabrication in the field occurs.

**PRELIMINARY**

ALL DIMENSIONS SUBJECT TO 1/4" TOLERANCE

**NESPA ENTERPRISES INC.**

2800 Richter Ave. Suite C Oroville, CA 95966

Office: (530) 534-9910

Fax: (530) 534-9915

E-Mail: [jim@tiledspas.com](mailto:jim@tiledspas.com) Web Site: [www.tiledspas.com](http://www.tiledspas.com)



If printing as a PDF:

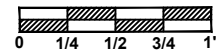
Page Scaling: None

DWG NAME

COAST RIDGE RD

SCALE

1/2" = 1'



DWG TYPE

SD

DATE

7/22/2013

SHEET

PAGE 1 OF 3

These drawings, concepts, and details contained herein are the original proprietary designs of **NESPA ENTERPRISES INC.**, developed over many years of experience in the industry and as such are protected by the copyright laws of the United States Government. Reproduction of any of the above without written permission to do so by **NESPA ENTERPRISES INC.**, is illegal.

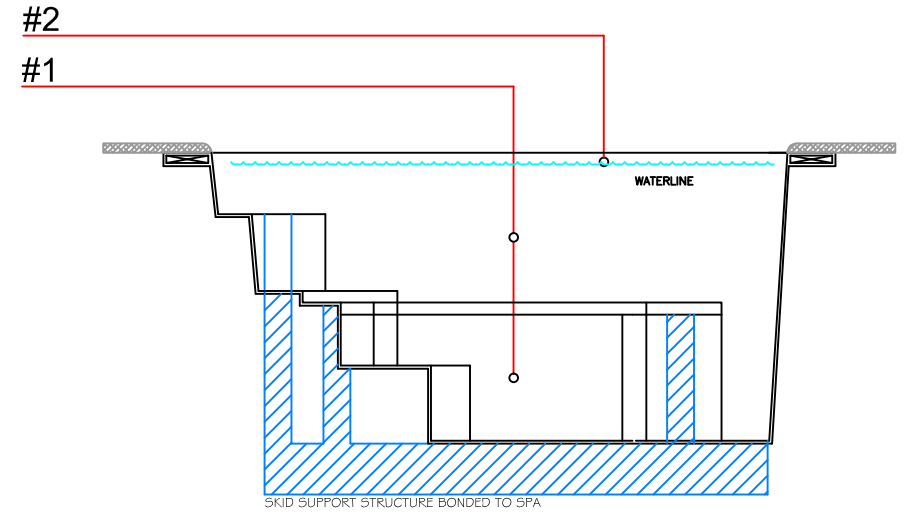
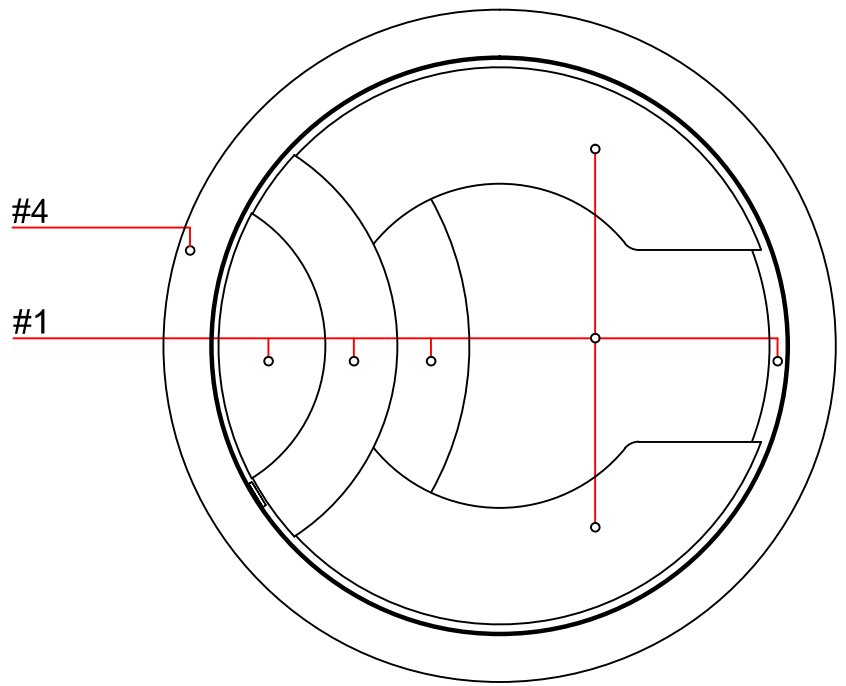
- #1 - FIELD TILE: The Tile Gallery Avalon - 2" x 2"
- #2 - WATERLINE (optional): \_\_\_\_\_
- #3 - BENCH & STEP EDGES (optional): \_\_\_\_\_
- #4 - TILED LIP (optional): \_\_\_\_\_

Date: \_\_\_\_\_  
 Approval: \_\_\_\_\_

- #1 - GROUT: \_\_\_\_\_
- #2 - GROUT: \_\_\_\_\_
- #3 - GROUT: \_\_\_\_\_



MSI - WALNUT 2" X 2"



7/22/2013 11:25:47 AM

All drawing dimensions supplied by [NESPA ENTERPRISES INC.](http://www.nespa.com) are for reference only. All CAD files were created using AutoCAD file (\*.dwg.) and were provided as a service to our customers using AutoCAD. Errors sometimes occur during this process and with software incompatibility upon opening a file. [NESPA ENTERPRISES INC.](http://www.nespa.com) and/or any authorized distributor of our products will not be held responsible for problems arising from files which have been converted and does not warranty the documents against deficiencies or typographical errors of any kind. We recommend that all measurements are verified with actual physical product before any custom fabrication in the field occurs.

**PRELIMINARY**  
 ALL DIMENSIONS SUBJECT TO 1/4" TOLERANCES

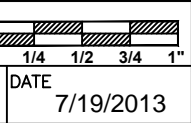
These drawings, concepts, and details contained herein are the original proprietary designs of [NESPA ENTERPRISES INC.](http://www.nespa.com), developed over many years of experience in the industry and as such are protected by the copyright laws of the United States Government. Reproduction of any of the above without written permission to do so by [NESPA ENTERPRISES INC.](http://www.nespa.com), is illegal.

**NESPA ENTERPRISES INC.**  
 2800 Richter Ave. Ste. C Oroville, CA 95966  
 Office: (530) 534-9910 Fax: (530) 534-9915  
 E-Mail: [jim@tiledspas.com](mailto:jim@tiledspas.com) Web Site: [www.tiledspas.com](http://www.tiledspas.com)



**If printing as a PDF:**  
 Page Scaling:

SCALE  
 N/A

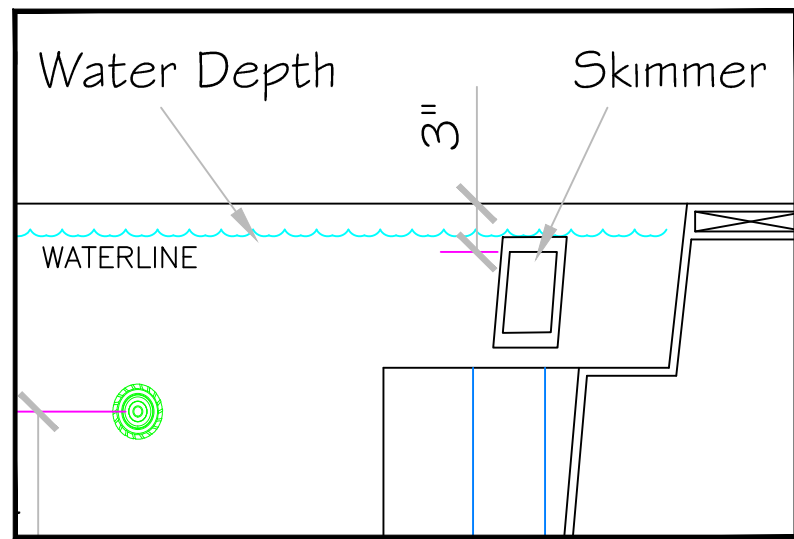
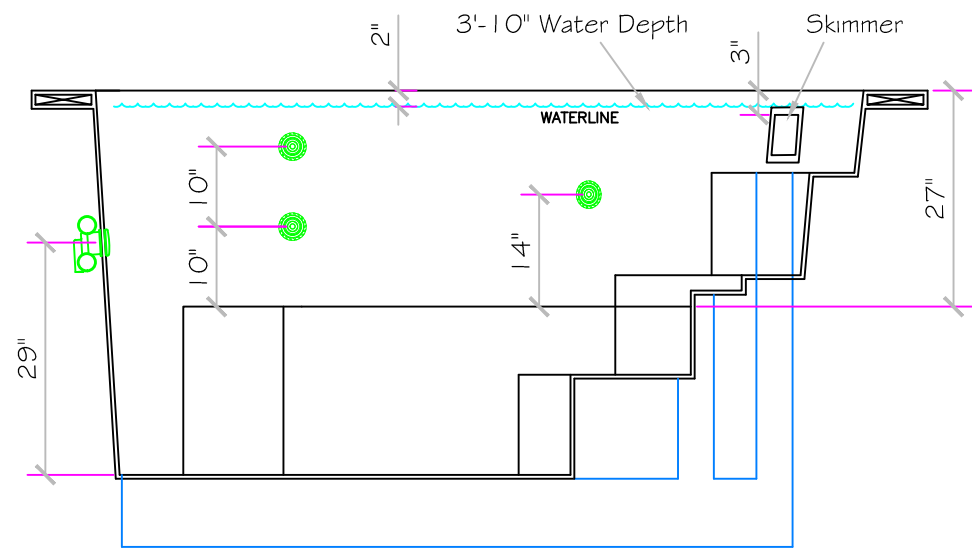
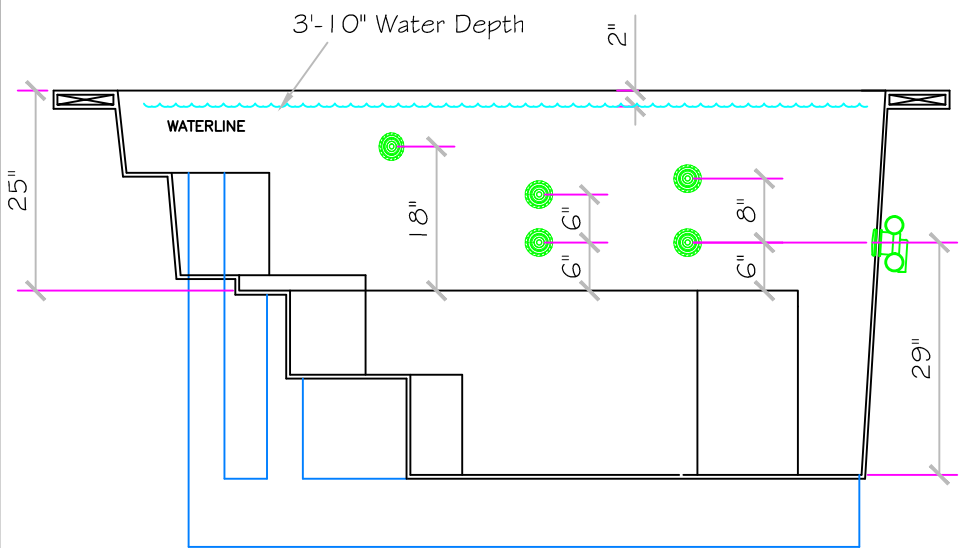


DWG TYPE  
 Tile

SHEET  
 PAGE 2 OF 3

DWG NAME  
 COAST RIDGE RD

DATE  
 7/19/2013



7/22/2013 11:25:48 AM

All drawing dimensions supplied by [NESPA ENTERPRISES INC.](http://www.nespa.com) are for reference only. All CAD files were created using AutoCAD file (\*.dwg.) and were provided as a service to our customers using AutoCAD. Errors sometimes occur during this process and with software incompatibility upon opening a file. [NESPA ENTERPRISES INC.](http://www.nespa.com) and/or any authorized distributor of our products will not be held responsible for problems arising from files which have been converted and does not warranty the documents against deficiencies or typographical errors of any kind. We recommend that all measurements are verified with actual physical product before any custom fabrication in the field occurs.

**PRELIMINARY**

ALL DIMENSIONS SUBJECT TO 1/4" TOLERANCES

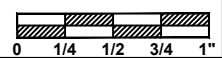
These drawings, concepts, and details contained herein are the original proprietary designs of [NESPA ENTERPRISES INC.](http://www.nespa.com), developed over many years of experience in the industry and as such are protected by the copyright laws of the United States Government. Reproduction of any of the above without written permission to do so by [NESPA ENTERPRISES INC.](http://www.nespa.com), is illegal.

**NESPA ENTERPRISES INC.**  
 2800 Richter Ave. Ste. C Oroville, CA 95966  
 Office: (530) 534-9910 Fax: (530) 534-9915  
 E-Mail: [jim@tiledspas.com](mailto:jim@tiledspas.com) Web Site: [www.tiledspas.com](http://www.tiledspas.com)



If printing as a PDF:  
 Page Scaling: None

SCALE  
 1/2" = 1'

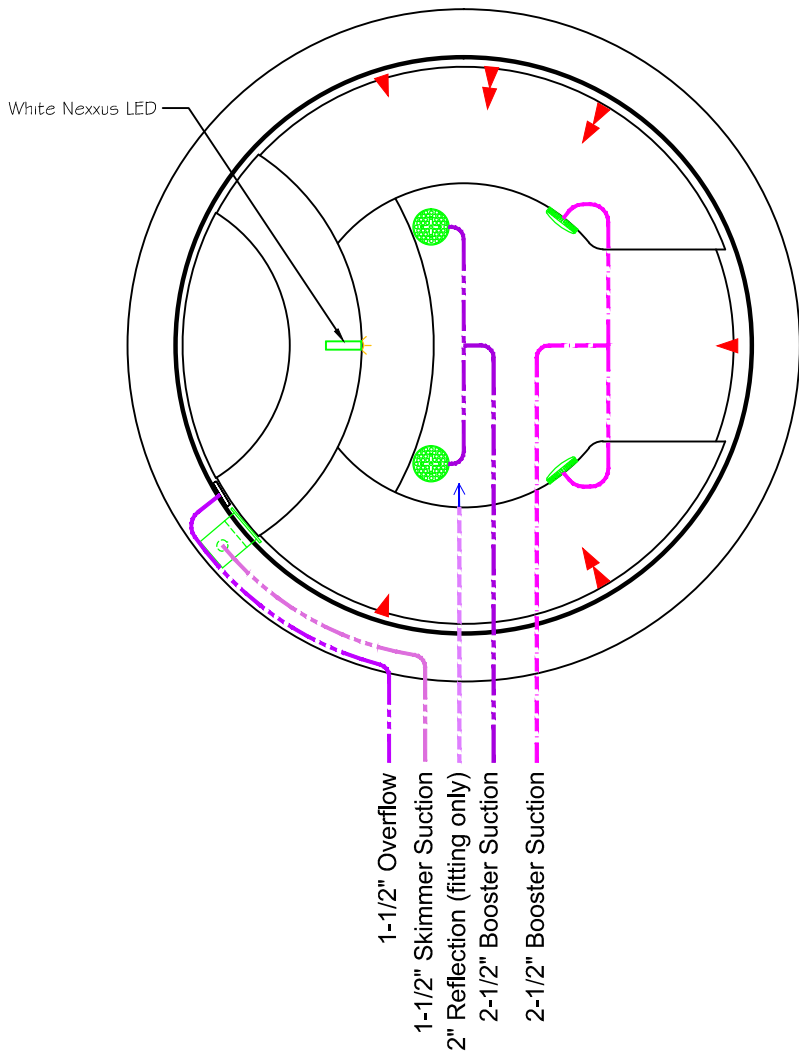


DWG TYPE  
 Jet Detail

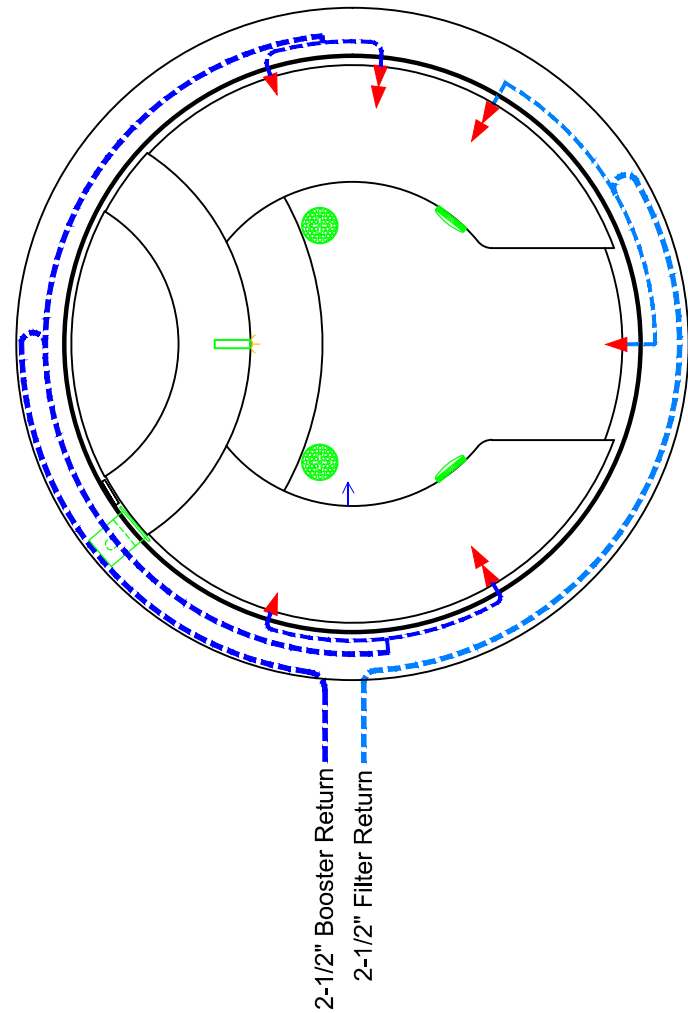
DWG NAME  
 COAST RIDGE RD

DATE  
 7/19/2013

SHEET  
 PAGE 3 OF 3



### SUCTION PLUMBING



7/22/2013 11:25:49 AM

### RETURN PLUMBING

These drawings, concepts, and details contained herein are the original proprietary designs of **NESPA ENTERPRISES INC.**, developed over many years of experience in the industry and as such are protected by the copyright laws of the United States Government. Reproduction of any of the above without written permission to do so by **NESPA ENTERPRISES INC.**, is illegal.

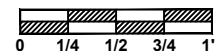
**NESPA ENTERPRISES INC.**  
 2800 Richter Ave. Ste. C Oroville, CA 95966  
 Office: (530) 534-9910 Fax: (530) 534-9915  
 E-Mail: [jim@tiledspas.com](mailto:jim@tiledspas.com) Web Site: [www.tiledspas.com](http://www.tiledspas.com)



If printing as a PDF:

Page Scaling: None

SCALE  
 3/8" = 1'



DWG TYPE

Plumbing

DWG NAME

COAST RIDGE RD

DATE

7/22/2013

SHEET

PAGE 4 OF 4