

*We make our covers stronger...
to keep your family safer!*



**Mesh and Solid
Safety Pool Covers**

We make it strong. We make it easy.™
COVERSTAR®



LATHAM®
behind every pool

Coverstar – the strongest name in swimming pool safety covers!

A Coverstar mesh or solid safety cover is the strongest way to prevent children and pets from getting into your pool when you can't be there. Custom-built to fit your pool perfectly and manufactured from best-in-class materials, a Coverstar cover is the best protection available for your family and your pool investment!

We make it strong. . . to keep your family safe!

The stronger the cover, the safer the cover. Coverstar applies exclusive, patented design and manufacturing innovations to give our mesh and solid safety covers unmatched strength and durability. Because we build them better, we back them better. . . **with our exclusive 20-year warranty!**

We make it easy. . . to install and maintain.

Unique features such as our exclusive center web and extra-long installation tool make it fast and easy to install and remove your Coverstar cover. All Coverstar covers keep debris out of your pool, and block virtually all sunlight – so you save on chemicals and enjoy cleaner water at opening time.



A Coverstar safety cover eliminates this ugly, dangerous mess from your backyard!
(Did you really want to drain and clean that?)





**Auto and SAM – the
Coverstar team!**

**Protecting your family
with the best-built Solid,
Mesh and Automatic
Safety Covers!**



Ovals, kidneys, even pools with custom shapes, raised walls, stairs, rails or water features – we'll create a Coverstar cover that will cover any pool beautifully . . . and safely!



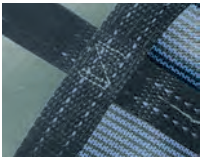
So many reasons why a Coverstar cover is your safest choice.

Interlocking Seams for Extra Strength!

A safety cover is only as strong as its seams, potentially its weakest point. **Only Coverstar uses interlocked and double overlapped seams** to dramatically improve weight transfer from the cover material to the seams and webbing! There's simply nothing stronger!

UV Resistant Thread

Our extra-durable thread resists sun damage and pool chemicals.



Double Reinforcement

To provide additional strength for high-stress areas, we use bar and box tack reinforcement on all perimeter straps – **a Coverstar exclusive!**



Custom Heavy-duty Hardware

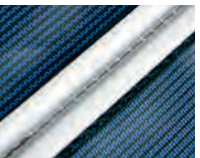
As an option, lower profile heavy-duty stainless steel springs with overlap D-rings ensure your cover lies flat to the deck and fits tight for optimum safety. Custom brass anchors provide the ultimate strength and durability.

Double Decker Edge

The perimeter of most covers can fray and unravel. Our cover material is first hemmed, then sandwiched between double layers of webbing around the perimeter, so the edge can't unravel!

Less Wear and Tear

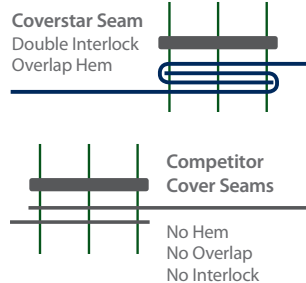
Heavy duty vinyl nosing pads protect the cover against wear from coping and steps.



Webbing Won't Abrade

Chafing strip sewn to bottom of cover protects the cover webbing from coping abrasion wear – and won't mark the coping, like other strips!

Remember, Coverstar is so sure we build the best safety covers on the market, **we're the only manufacturer to back them with a 20-YEAR WARRANTY!**



Strength you can rely on!

**BUILT
COVERSTAR
STRONG**

All Coverstar mesh and solid safety covers exceed ASTM standards when properly installed.



The right cover to fit your needs. . . and perfectly fit your pool!

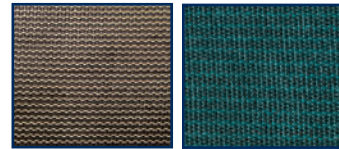
Coverstar offers mesh covers for maximum drainage and solid covers that block 100% of sunlight – in a variety of material weights and colors. All can be custom designed to fit any size or shape pool precisely, including any special features such as raised walls, diving boards, stairs and rails.

The professional Coverstar team will help you select a cover with the performance and features that best meet your needs!

Mesh Safety Covers

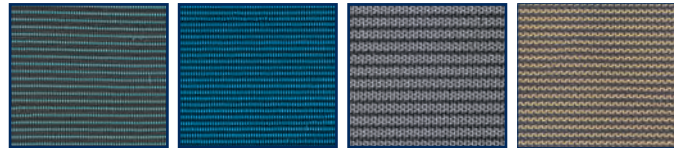
Coverstar Premium 98 High Shade Mesh

- 98% shade, 7 oz weight
- Allows water through for drainage and safety while keeping sunlight and debris out
- Available in green and tan



Coverstar Standard 95 Shade Mesh

- 95% shade, 5.2 oz weight
- Lightweight for easy installation and removal, about half the weight of Coverstar's Heavy-Duty solid cover
- Allows water through for drainage and safety
- Available in green, blue, grey and tan



Solid Safety Covers

All Coverstar solid safety covers feature our patented INVIS-A-DRAIN™

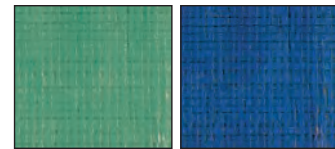
– minimizes debris passage for easy cleaning, no puddling. **A Coverstar exclusive!**

Also available with weighted pump to immediately clear standing water and maintain safety standards.



Coverstar Lite Solid

- 7 oz weight
- Keeps out all debris and sunlight
- Available in green and blue



Coverstar Heavy-Duty Solid

- Full 12 oz weight; high-end construction and features
- Keeps out all debris and sunlight
- Available in green and blue





Thinking automatic?

Coverstar also manufactures the world's best-built automatic safety covers, with push-button convenience. For more information, contact your Coverstar dealer or call us at 800-617-7283.



Let the Coverstar team keep your family safe!

To find out more about Coverstar ultimate quality Mesh, Solid and Automatic Safety Swimming Pool Covers, please visit coverstar.com or call 800-617-7283.



AUTO and **SAM** are

We make it strong. We make it easy.™
COVERSTAR®



787 Watervliet-Shaker Road, Latham, New York 12110 | 800-833-3800
383 Elgin Street, Brantford, ON N3S 7P5 | 800-638-7422

© Latham Pool Products, Inc. 2013. All rights reserved.

ADCOV100.13 40,000 5/13 cf