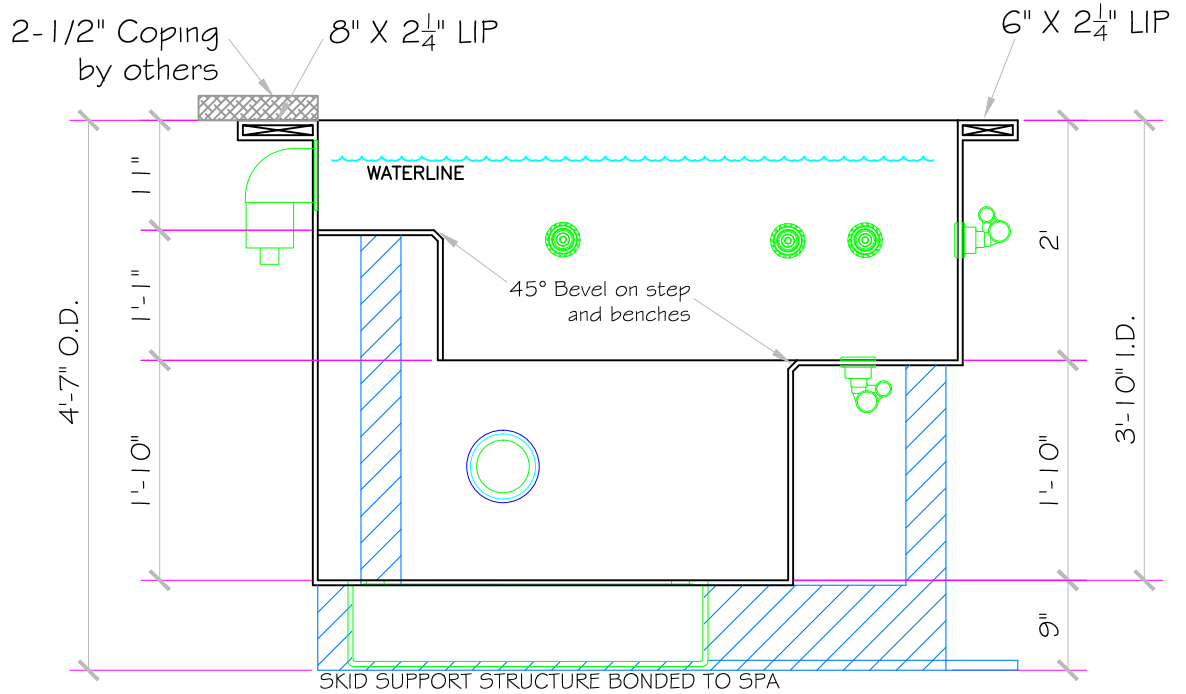
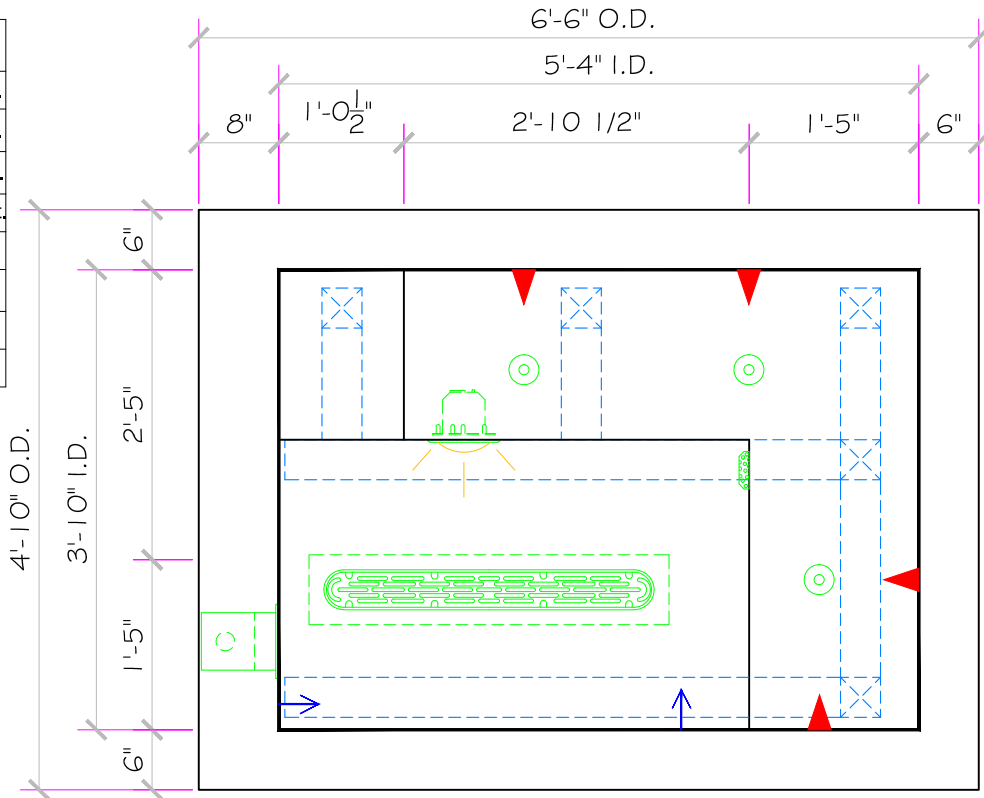


SPECIFICATIONS	
SHELL WEIGHT:	1700 LBS.
WATER WEIGHT:	2611 LBS.
TOTAL SHELL & WATER WEIGHT:	4311 LBS.
WATER VOLUME:	53 Cu.Ft.
MAX WATER GAL:	396 GAL.
SURFACE AREA:	20.4 SQ. FT.
IAPMO#:	1138
FDA#:	2030305



APPROVED

11/5/2013 12:36:39 PM

ALL DIMENSIONS SUBJECT TO 1/4" TOLERANCES

NESPA ENTERPRISES INC.

2800 Richter Ave. Suite C Oroville, CA 95966

Office: (530) 534-9910

Fax: (530) 534-9915

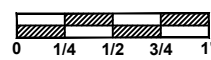
E-Mail: sales@tiledspas.com Web Site: www.tiledspas.com



If printing as a PDF:

Page Scaling:

SCALE
5/8" = 1'



DWG TYPE

SD

DWG NAME

MANCHESTER 2

DATE

8/8/2013

SHEET

PAGE 1 OF 4

These drawings, concepts, and details contained herein are the original proprietary designs of NESPA ENTERPRISES, developed over many years of experience in the industry and as such are protected by the copyright laws of the United States Government. Reproduction of any of the above without written permission to do so by NESPA ENTERPRISES, is illegal.

#1 - FIELD TILE: Sicis Blue Angel

#2 - WATERLINE (optional): By Others

#3 - BENCH & STEP EDGES (optional): By Others

#4 - TILED LIP (optional): By Others

Date: _____

Approval: _____

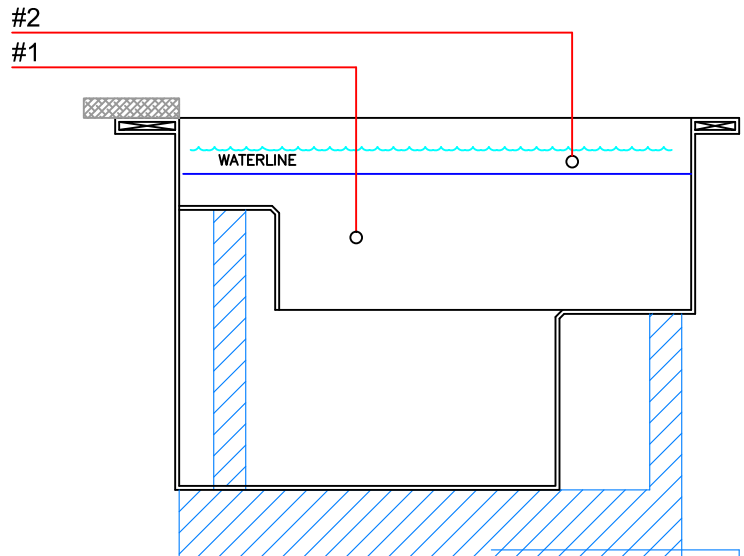
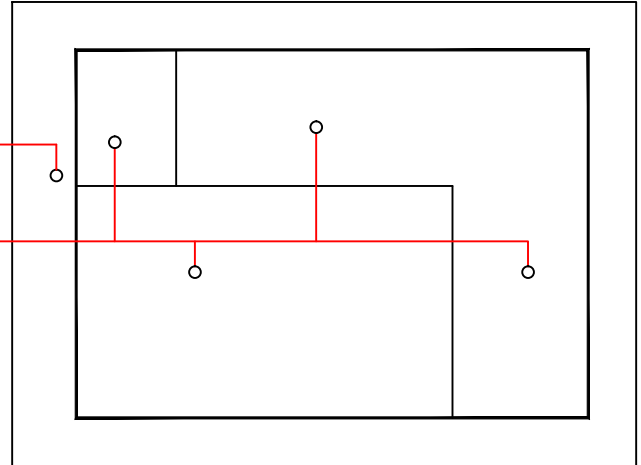
#1 - GROUT: _____

#2 - GROUT: _____

#3 - GROUT: _____



Sicis Blue Angel



APPROVED

11/5/2013 12:36:40 PM

ALL DIMENSIONS SUBJECT TO 1/4" TOLERANCES

NESPA ENTERPRISES INC.
 2800 Richter Ave. Suite C Oroville, CA 95966
 Office: (530) 534-9910 Fax: (530) 534-9915
 E-Mail: sales@tiledspas.com Web Site: www.tiledspas.com

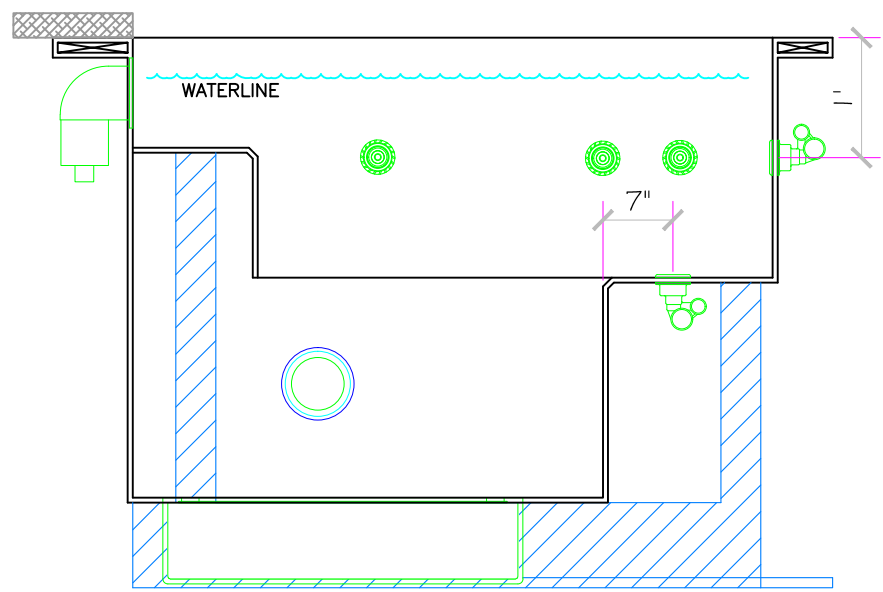
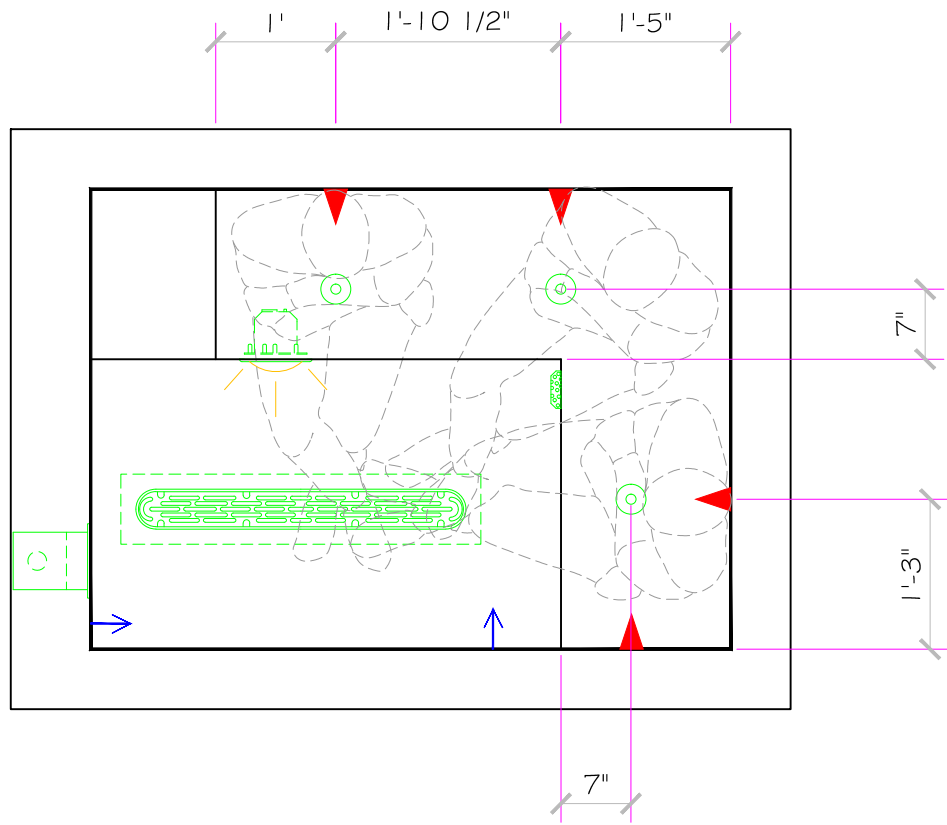


If printing as a PDF:
 Page Scaling:
 DWG NAME: MANCHESTER 2

SCALE: 1/2" = 1'
 DATE: 8/8/2013

DWG TYPE: Tile Detail
 SHEET: PAGE 2 OF 4

These drawings, concepts, and details contained herein are the original proprietary designs of NESPA ENTERPRISES, developed over many years of experience in the industry and as such are protected by the copyright laws of the United States Government. Reproduction of any of the above without written permission to do so by NESPA ENTERPRISES, is illegal.



APPROVED

11/5/2013 12:36:41 PM

ALL DIMENSIONS SUBJECT TO 1/4" TOLERANCES

NESPA ENTERPRISES INC.
 2800 Richter Ave. Suite C Oroville, CA 95966
 Office: (530) 534-9910 Fax: (530) 534-9915
 E-Mail: sales@tiledspas.com Web Site: www.tiledspas.com

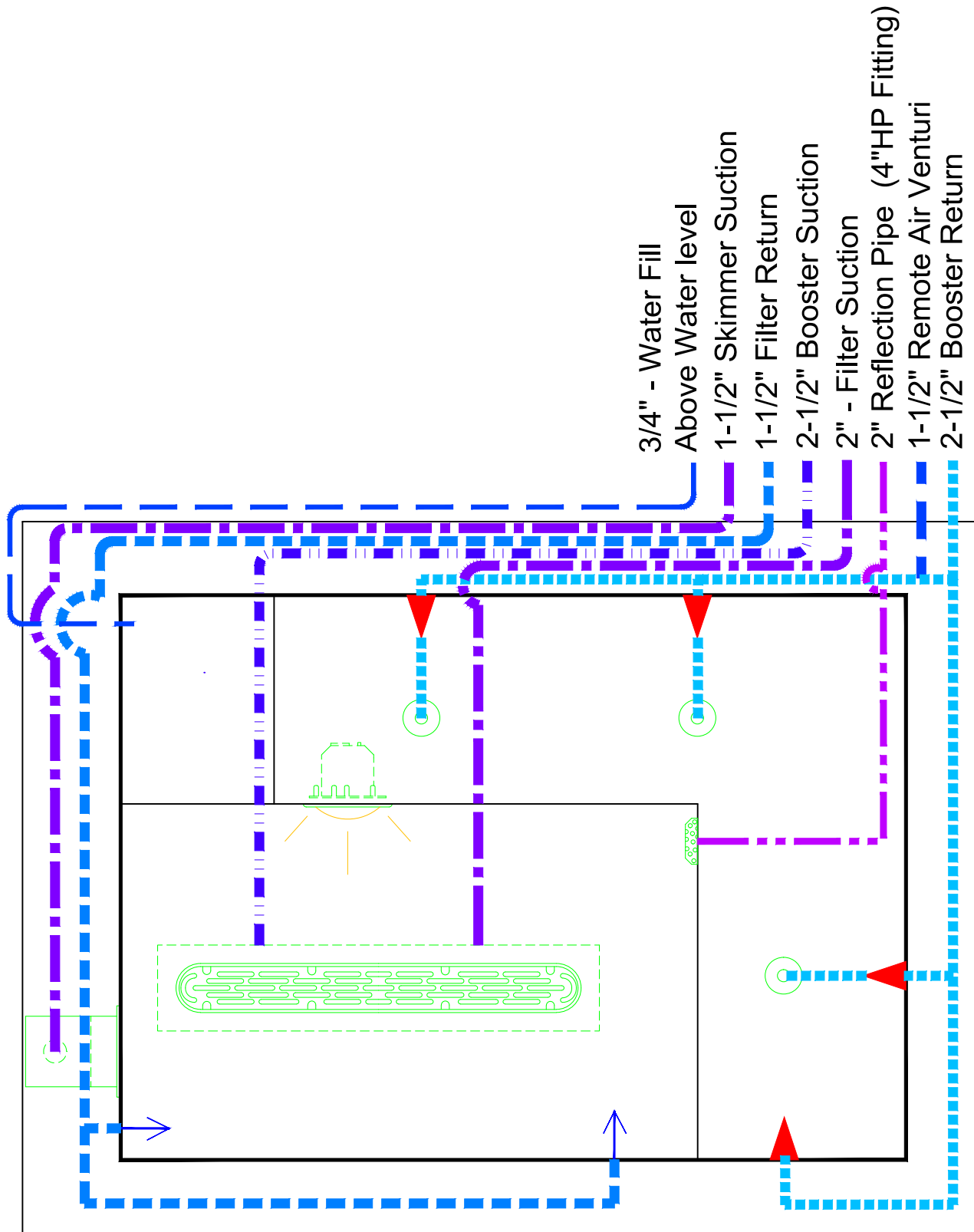


If printing as a PDF:
 Page Scaling:
 DWG NAME: MANCHESTER 2

SCALE: 5/8" = 1'
 0 1/4 1/2 3/4 1"
 DATE: 8/8/2013

DWG TYPE: JET Layout
 SHEET: PAGE 3 OF 4

These drawings, concepts, and details contained herein are the original proprietary designs of NESPA ENTERPRISES, developed over many years of experience in the industry and as such are protected by the copyright laws of the United States Government. Reproduction of any of the above without written permission to do so by NESPA ENTERPRISES, is illegal.



APPROVED

11/5/2013 12:36:42 PM

ALL DIMENSIONS SUBJECT TO 1/4" TOLERANCES

NESPA ENTERPRISES INC.
 2800 Richter Ave. Suite C Oroville, CA 95966
 Office: (530) 534-9910 Fax: (530) 534-9915
 E-Mail: sales@tiledspas.com Web Site: www.tiledspas.com



If printing as a PDF:
 Page Scaling:
 DWG NAME: MANCHESTER 2

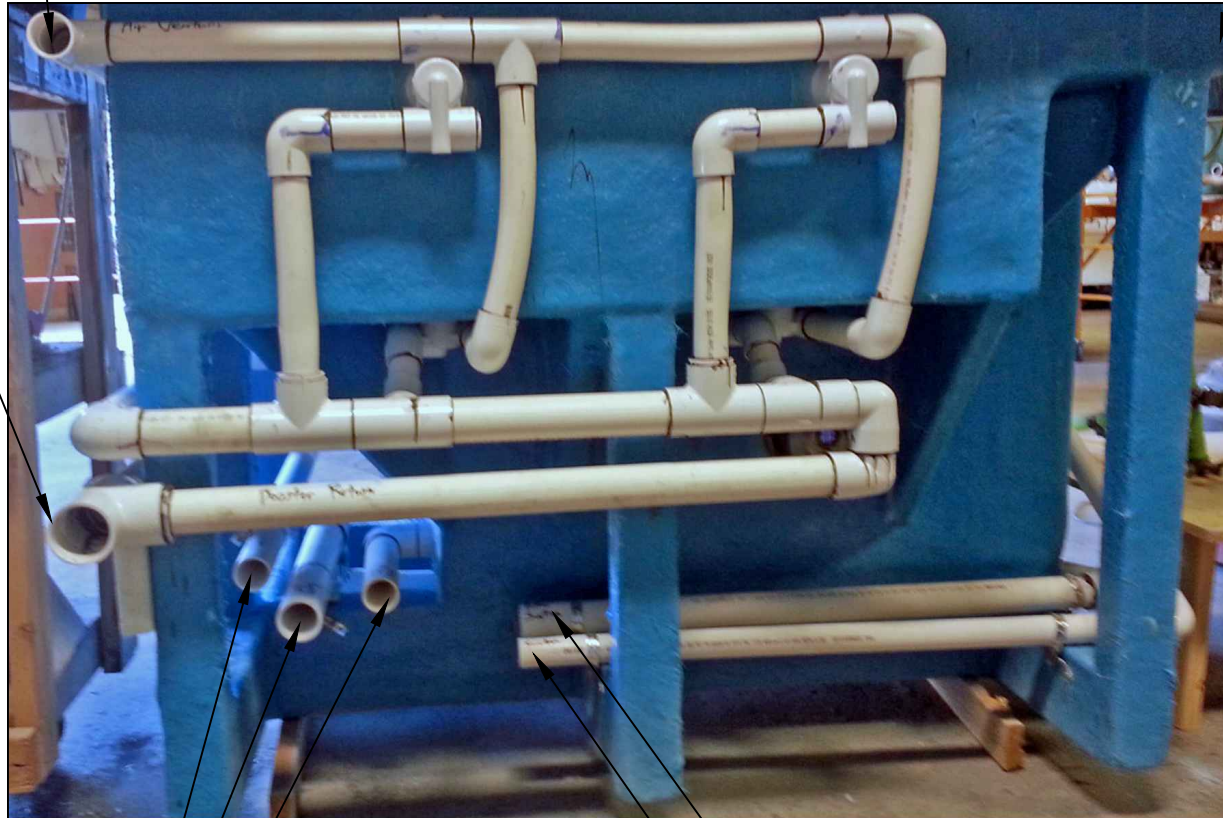
SCALE: 1" = 1'
 0 1/4 1/2 3/4 1"
 DATE: 8/8/2013

DWG TYPE: Plumbing
 SHEET: PAGE 4 OF 4

These drawings, concepts, and details contained herein are the original proprietary designs of NESPA ENTERPRISES, developed over many years of experience in the industry and as such are protected by the copyright laws of the United States Government. Reproduction of any of the above without written permission to do so by NESPA ENTERPRISES, is illegal.

2" Jet Air Venturi

1/2" Waterfill



2" Booster Jet Return

2" Heat/Filter Return

2" Filter Suction

2-1/2" Booster Suction

1-1/2" Skimmer Suction

Water Level Sensor Line

All drawing dimensions supplied by [NESPA ENTERPRISES INC.](http://www.nespa.com) are for reference only. All CAD files were created using AutoCAD file (*.dwg.) and were provided as a service to our customers using AutoCAD. Errors sometimes occur during this process and with software incompatibility upon opening a file. [NESPA ENTERPRISES INC.](http://www.nespa.com) and/or any authorized distributor of our products will not be held responsible for problems arising from files which have been converted and does not warrant the documents against deficiencies or typographical errors of any kind. We recommend that all measurements are verified with actual physical product before any custom fabrication in the field occurs.

11/5/2013 12:36:42 PM

As-Built

ALL DIMENSIONS SUBJECT TO 1/4" TOLERANCES

These drawings, concepts, and details contained herein are the original proprietary designs of [NESPA ENTERPRISES INC.](http://www.nespa.com), developed over many years of experience in the industry and as such are protected by the copyright laws of the United States Government. Reproduction of any of the above without written permission to do so by [NESPA ENTERPRISES INC.](http://www.nespa.com), is illegal.

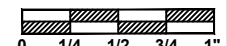
NESPA ENTERPRISES INC.
 2800 Richter Ave. Ste. C Oroville, CA 95966
 Office: (530) 534-9910 Fax: (530) 534-9915
 E-Mail: jim@tiledspas.com Web Site: www.tiledspas.com



If printing as a PDF:

Page Scaling: None

SCALE
N/A



DWG TYPE
Plumbing I.D.

DWG NAME
MANCHESTER 2

DATE
11/5/2013

SHEET
PAGE 1 OF 1