



NESPA ENTERPRISES INC.

2800 Richter Ave. Suite C
 Oroville, CA 95966
 Office: (530) 534-9910
 Fax: (530) 534-9915
 E-Mail: sales@tiledspas.com
 Web Site: www.tiledspas.com

CUSTOM LEGACY

SPA DETAIL

ALL DIMENSIONS SUBJECT TO 1/4" TOLERANCES

SCALE: 3/8" = 1'-0"

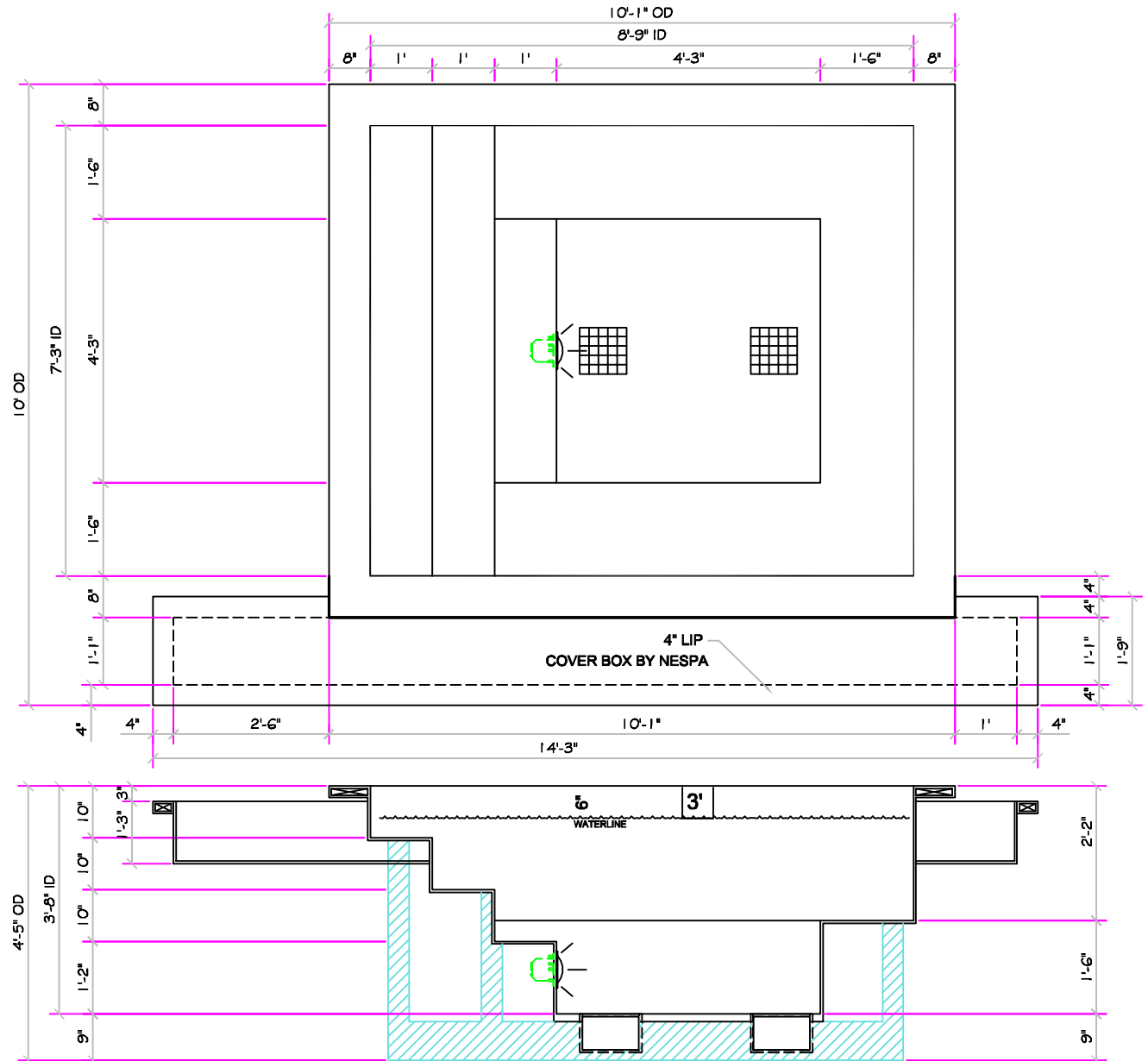
DATE: 5/26/2006

JOB: ROSS

DR#: SD-02

SPECIFICATIONS	
DRY WEIGHT:	2200 LBS.
TOTAL WEIGHT:	11678.8 LBS.
WATER:	1137 GAL.
VOLUME:	152 Cu.Ft.
WEIGHT:	9478.8 LBS.
SURFACE AREA:	63 SQ. FT.
IAPMO#:	1138
FDA#:	2030305

EQUIPMENT LEGEND	
WJ	JET
WI	INLET
	SUCTION
	EQUALIZER
	MAIN DRAIN
	SKIMMER
	SPA LIGHT
	SKID STRUCTURE



These drawings, concepts, and details contained herein are the original proprietary designs of NESPA ENTERPRISES, developed over many years of experience in the pool and spa industry and as such are protected by the copyright laws of the United States Government. Reproduction of any of the above without written permission to do so by NESPA ENTERPRISES, is illegal.



NESPA ENTERPRISES INC.

2800 Richter Ave. Suite C
 Oroville, CA 95966
 Office: (530) 534-9910
 Fax: (530) 534-9915
 E-Mail: sales@tiledspas.com
 Web Site: www.tiledspas.com

CUSTOM BATH

SPA BATH DETAIL

ALL DIMENSIONS SUBJECT TO 1/4" TOLERANCES

SCALE: 1/2" = 1'-0"

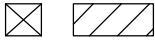
DATE: 1/4/2007

JOB: ROSS

DR#: SD-BATH

SPECIFICATIONS	
DRY WEIGHT:	500 LBS.
TOTAL WEIGHT:	3306 LBS.
WATER:	336.6 GAL.
VOLUME:	45 Cu.Ft.
WEIGHT:	2806 LBS.
SURFACE AREA:	24 SQ. FT.
IAPMO#:	1138
FDA#:	2030305

SKID SUPPORT STRUCTURE* BONDED TO SPA

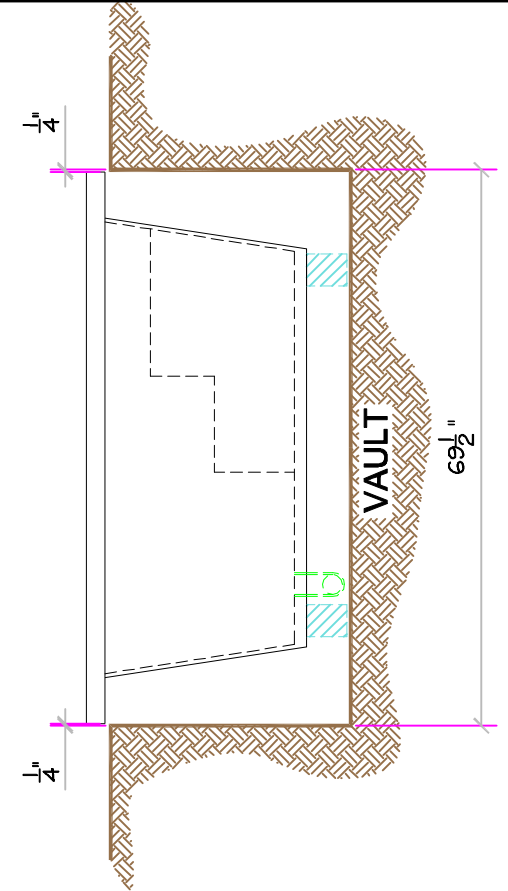
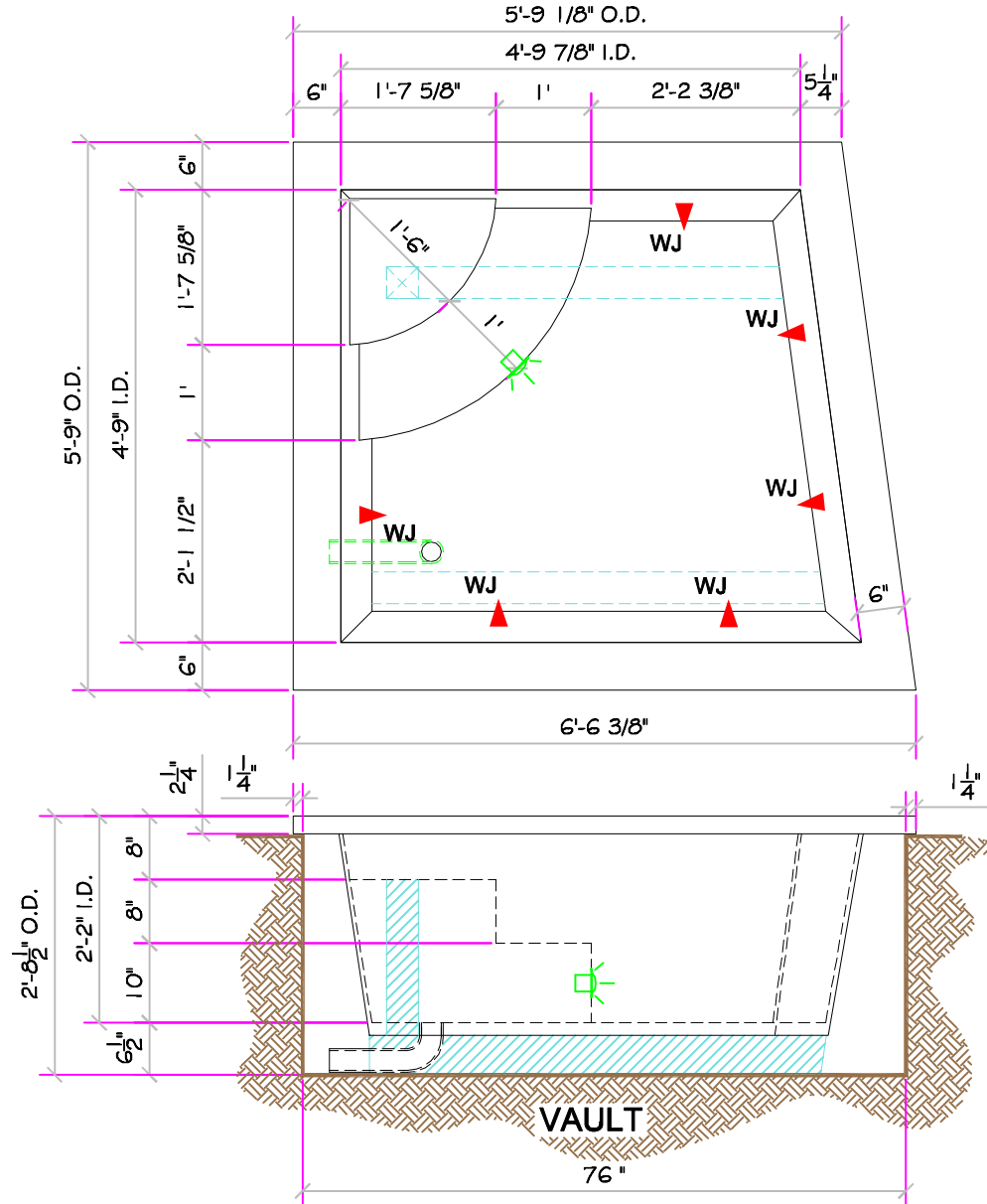


*SKIDS SUPPLIED BY NESPA

JET **FILL**

LIGHT NICHE

SPA BRIGHT, 120 V, 100 WATT, 50' CORD, U.L. APPROVED



These drawings, concepts, and details contained herein are the original proprietary designs of NESPA ENTERPRISES, developed over many years of experience in the pool and spa industry and as such are protected by the copyright laws of the United States Government. Reproduction of any of the above without written permission to do so by NESPA ENTERPRISES, is illegal.



NESPA ENTERPRISES INC.

2800 Richter Ave. Suite C
Oroville, CA 95966
Office: (530) 534-9910
Fax: (530) 534-9915
E-Mail: sales@tiledspas.com
Web Site: www.tiledspas.com

CUSTOM BATH

BATH EQUIPMENT LAYOUT

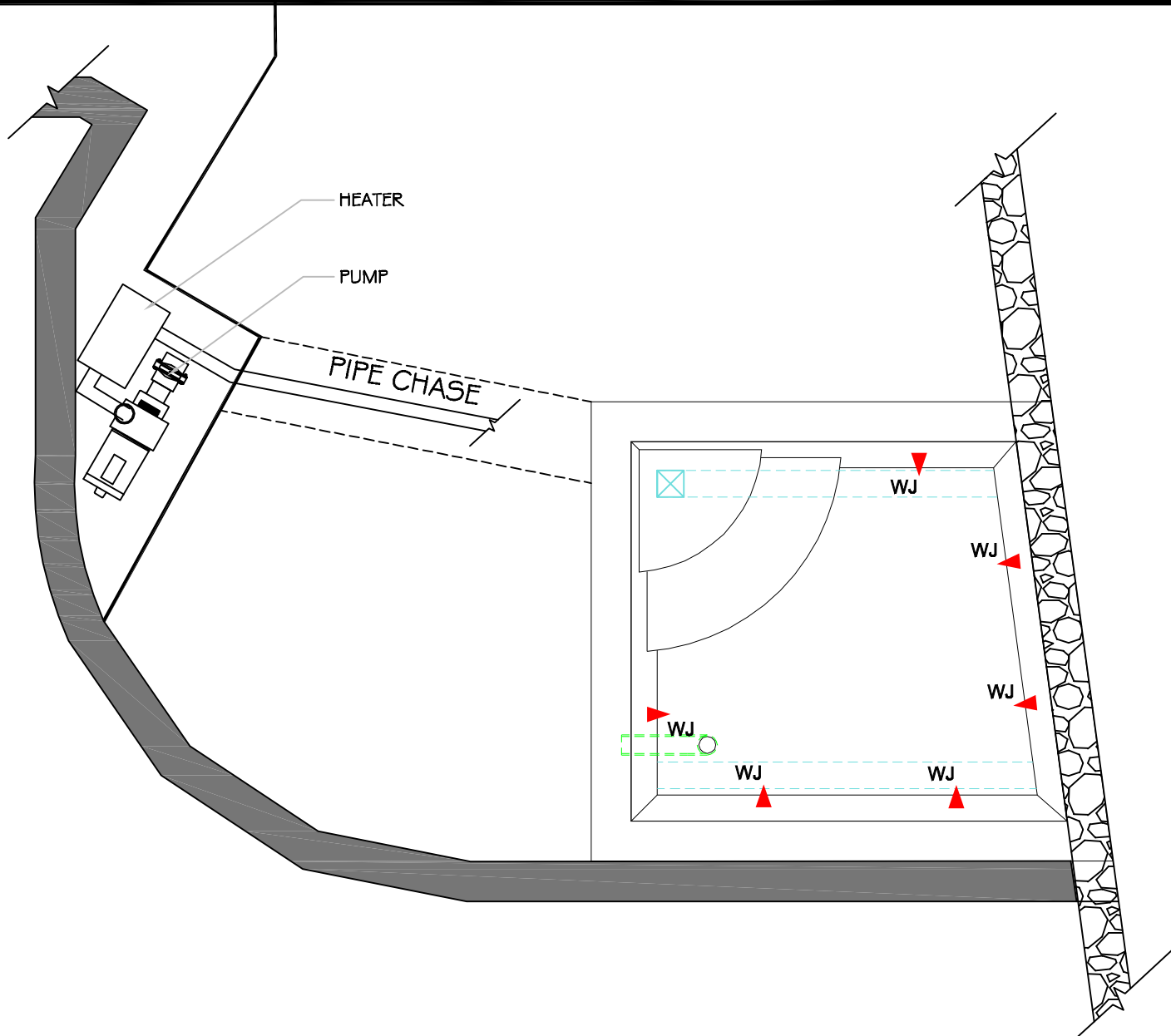
ALL DIMENSIONS SUBJECT TO 1/4" TOLERANCES

SCALE: 1/2" = 1'-0"

DATE: 6/2/2006

JOB: ROSS

DR#: EQUIP



These drawings, concepts, and details contained herein are the original proprietary designs of NESPA ENTERPRISES, developed over many years of experience in the pool and spa industry and as such are protected by the copyright laws of the United States Government. Reproduction of any of the above without written permission to do so by NESPA ENTERPRISES, is illegal.