

SPECIFICATIONS	
DRY WEIGHT:	3000 LBS.
TOTAL WEIGHT:	14412 LBS.
WATER:	1368.8 GAL.
VOLUME:	183 Cu.Ft.
WEIGHT:	11412 LBS.
SURFACE AREA:	18 SQ. FT.
IAPMO#:	1138
FDA#:	2030305

**SKID SUPPORT STRUCTURE\* BONDED TO SPA**



\*SKIDS SUPPLIED BY NESPA

**JET** **FILL**

**SUCTION**

5" HIGH FLOW SUCTIONS  
 WATERWAY #840-3850  
 8.39 SQ. IN. OPEN AREA  
 208 GPM AT 1.5 FT/SEC  
 COMPLIES W/ ANSI CODE A112.19  
 UL APPROVED

**EQUALIZER**

4" EQUALIZER  
 HYDROAIR #10-6806  
 3.81 SQ. IN. OPEN AREA,  
 COMPLIES W/ ANSI CODE A112.19

**MAIN DRAIN**

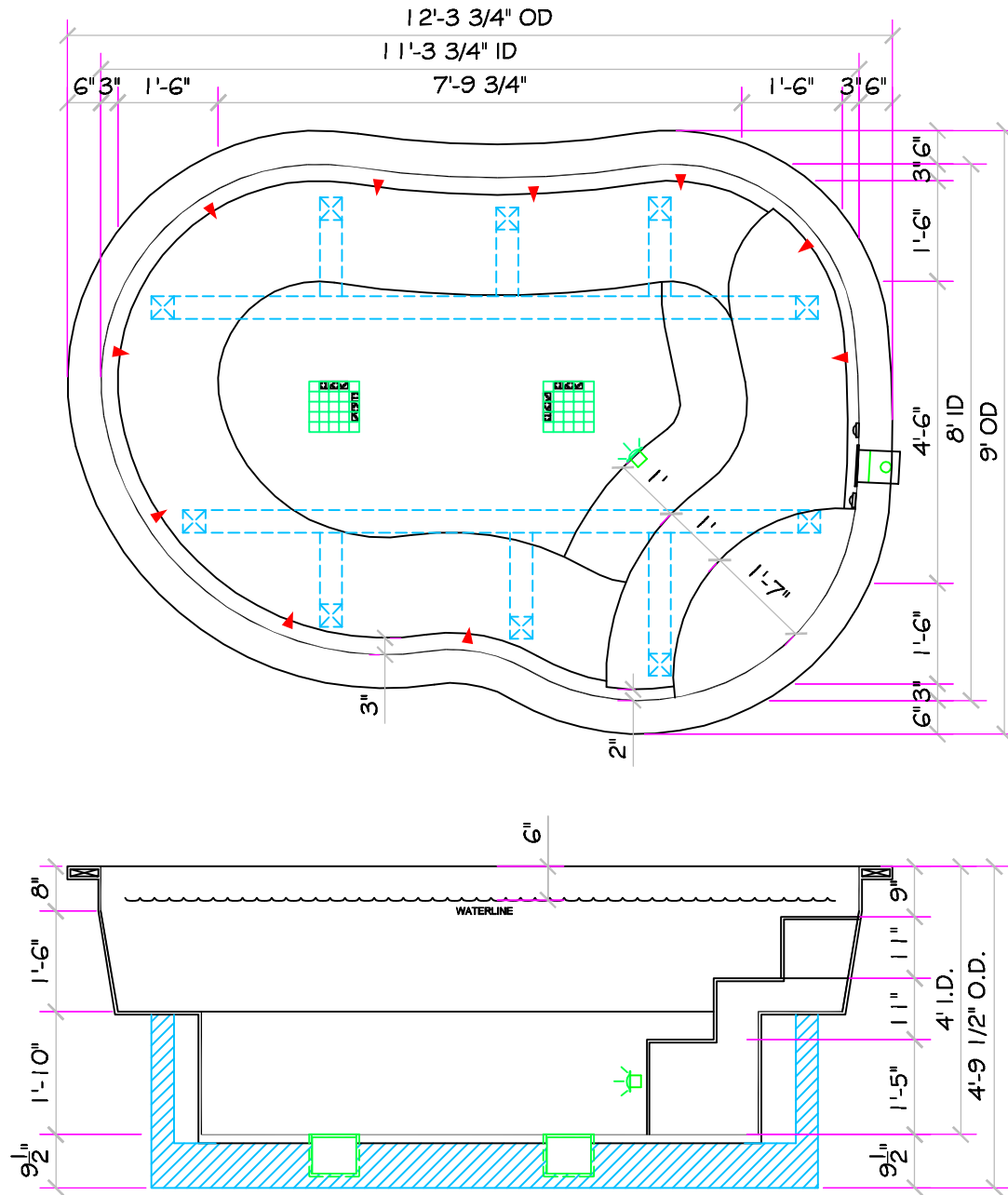
PAC FAB #54-2019  
 9" X 9" FRAME,  
 49 SQ. IN. OPEN AREA,  
 299 GPM @ 1 1/2 FT/SEC

**LIGHT NICHE**

SPA BRIGHT, 120 V,  
 100 WATT, 50' CORD,  
 U.L. APPROVED

**SKIMMER**

HAYWARD SP-1084FVE  
 SURFACE SKIMMER  
 W/ EQUALIZER,  
 NSF APPROVED



\*ALL DIMENSIONS SUBJECT TO 1/4" TOLERANCES\*

These drawings, concepts, and details contained herein are the original proprietary designs of NESPA ENTERPRISES, developed over many years of experience in the pool and spa industry and as such are protected by the copyright laws of the United States Government. Reproduction of any of the above without written permission to do so by NESPA ENTERPRISES, is illegal.

**NESPA ENTERPRISES INC.**

2800 Richter Ave. Ste. C Oroville, CA 95966

Office: (530) 534-9910

Fax: (530) 534-9915

E-Mail: [sales@tiledspas.com](mailto:sales@tiledspas.com)

Web Site: [www.tiledspas.com](http://www.tiledspas.com)



SIZE  
A

DWG TYPE  
SPA SD6

DWG NO.

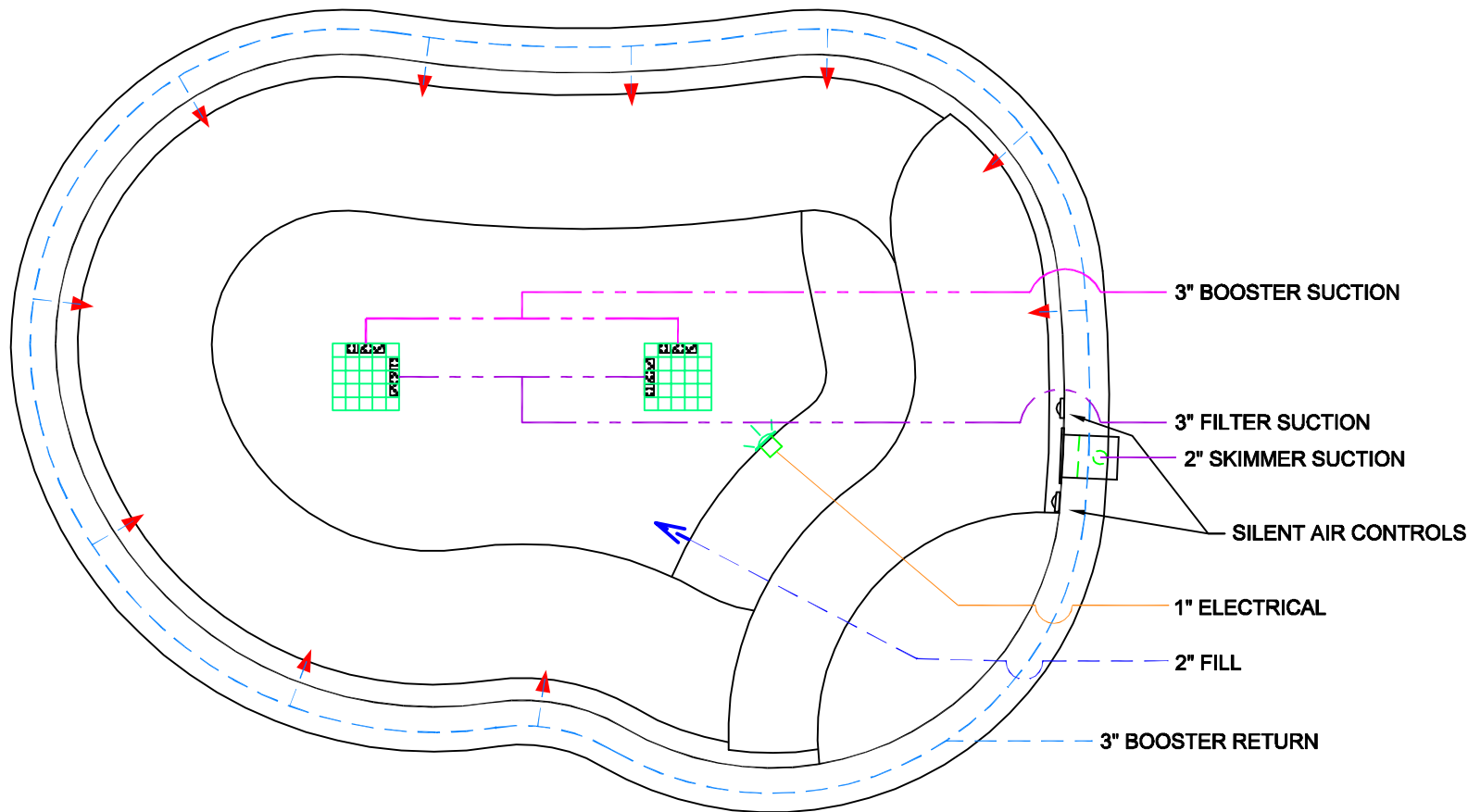
JOHNSTON

REV  
6

SCALE 3/8" = 1'

DATE 3/27/2007

SHEET PAGE 1 OF 6



\*ALL DIMENSIONS SUBJECT TO 1/4" TOLERANCES\*

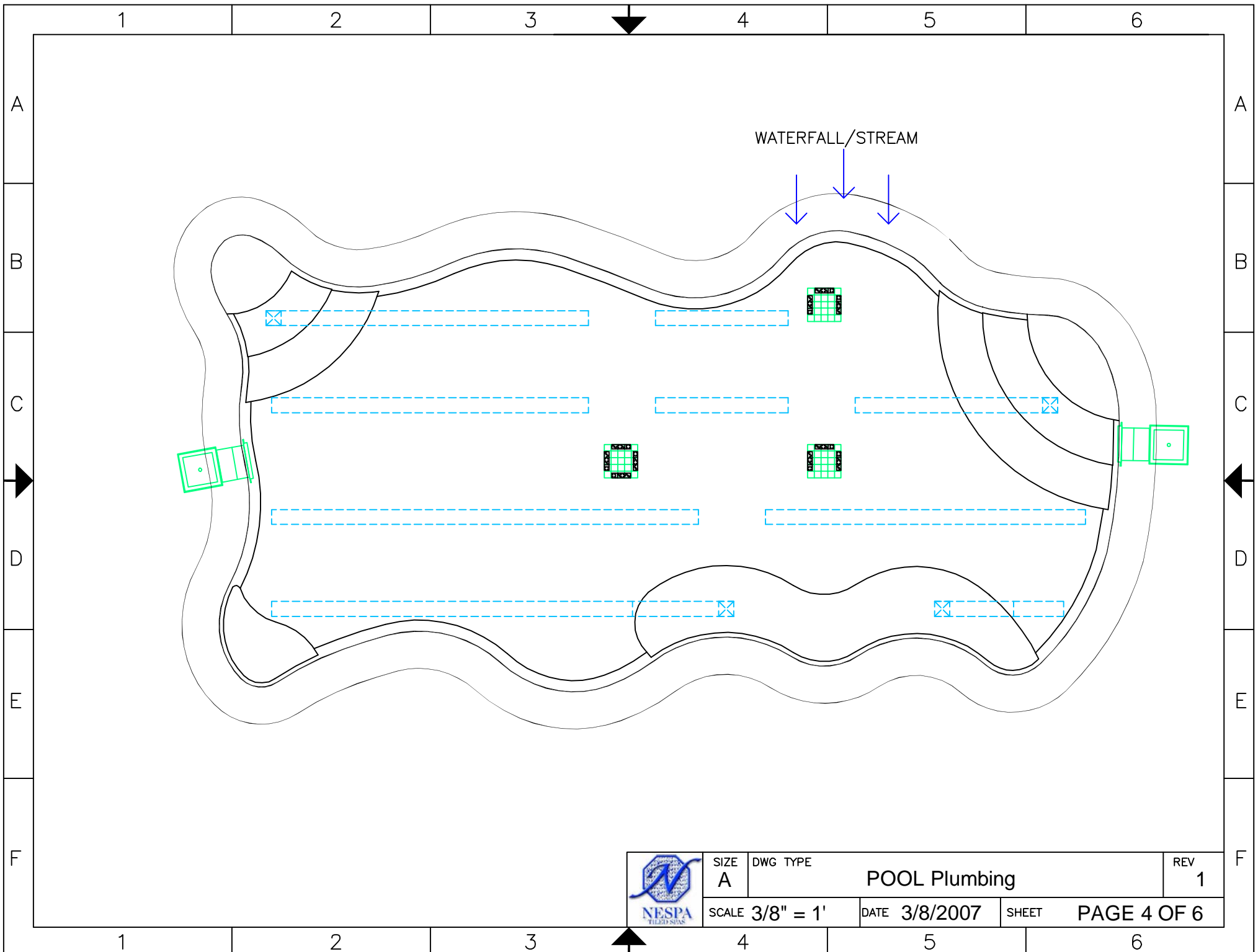
These drawings, concepts, and details contained herein are the original proprietary designs of NESPA ENTERPRISES, developed over many years of experience in the pool and spa industry and as such are protected by the copyright laws of the United States Government. Reproduction of any of the above without written permission to do so by NESPA ENTERPRISES, is illegal.


**NESPA ENTERPRISES INC.**  
 2800 Richter Ave. Ste. C Oroville, CA 95966  
 Office: (530) 534-9910 Fax: (530) 534-9915  
 E-Mail: [sales@tiledspas.com](mailto:sales@tiledspas.com) Web Site: [www.tiledspas.com](http://www.tiledspas.com)

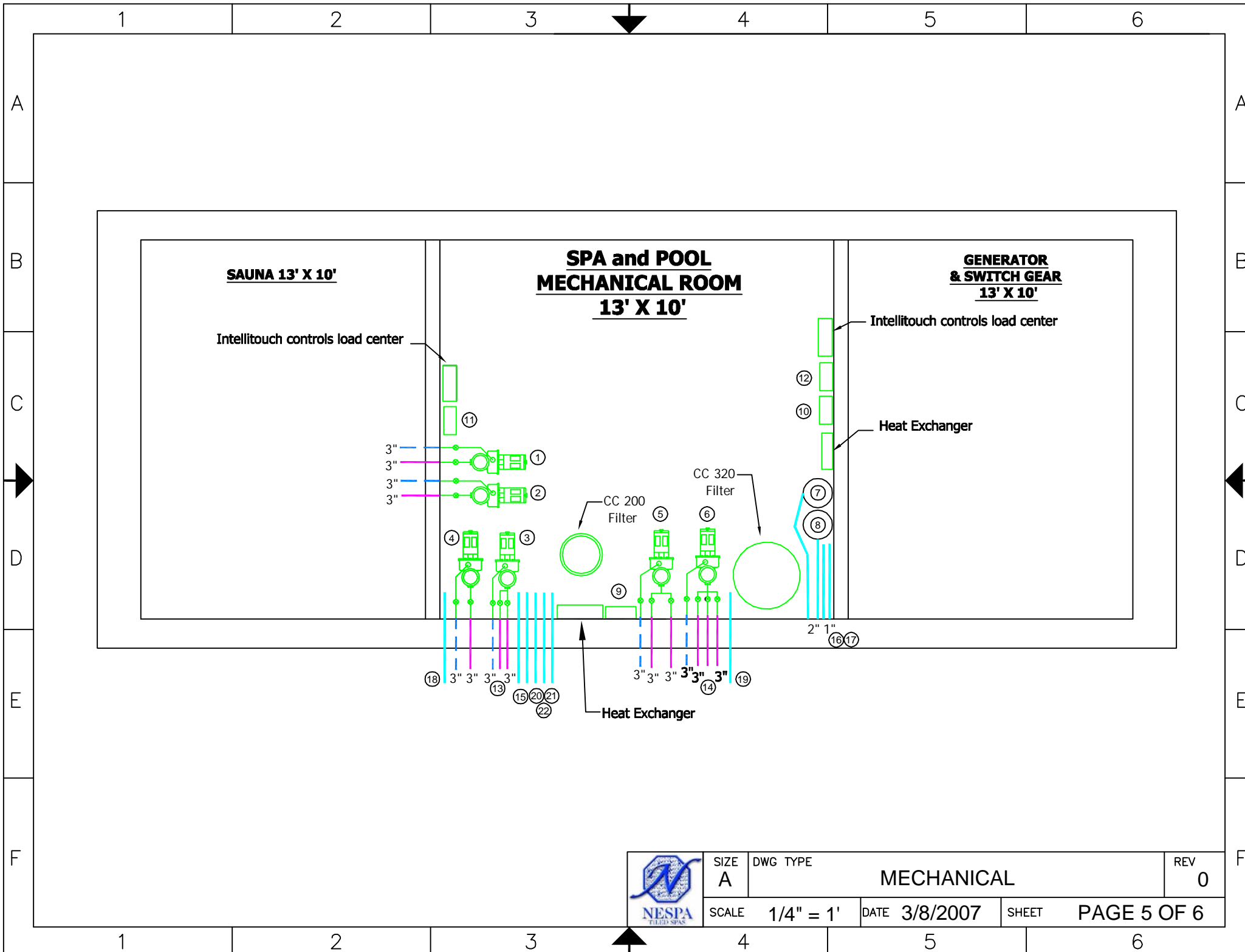


SIZE <b>A</b>	DWG TYPE <b>SPA PLUMBING</b>	DWG NO. <b>JOHNSTON</b>	REV <b>6</b>
SCALE <b>1/2" = 1'</b>		DATE <b>3/27/2007</b>	SHEET <b>PAGE 2 OF 6</b>





	SIZE A	DWG TYPE POOL Plumbing	REV 1
	SCALE 3/8" = 1'	DATE 3/8/2007	SHEET PAGE 4 OF 6



**SAUNA 13' X 10'**

**SPA and POOL  
MECHANICAL ROOM  
13' X 10'**

**GENERATOR  
& SWITCH GEAR  
13' X 10'**

Intellitouch controls load center

Intellitouch controls load center

Heat Exchanger

Heat Exchanger

3"  
3"  
3"  
3"

2" 1"  
16 17

3" 3" 3" 3"

3" 3" 3" 3" 3"



SIZE A	DWG TYPE MECHANICAL	REV 0
SCALE 1/4" = 1'	DATE 3/8/2007	SHEET PAGE 5 OF 6

1

2

3

4

A

A

B

B

C

C

D

D

E

E

F

F

Component	HP	Volts	Running Loads	Fused	Skimmer Pipe	Suction Pipe	Return pipe	Electrical
1. Waterfall Pump 1	3	230/1ph	14	20		3"	3"	
2. Waterfall Pump 2	3	230/1ph	14	20		3	3	
3. Spa Filter pump	2	230/1ph	12	20	2	3	3	
4. Spa Jet Pump	3	230/1ph	14	20		3	3	
5. Pool Booster Pump	3	230/1ph	14	20		3	3	
6. Pool Filter Pump	1.5	230/1ph	10	20	2	2	3	
7. Spa Jet Blower	2	230/1ph	8	15			2	
8. Pool Jet Blower	2	230/1ph	8	15			2	
9. Spa Ozone		120/1ph	2	15				
10. Pool Ozone		120/1ph	2	15				
11. Spa Fiber optic illuminator		120/1ph	4	15			1.5	
12. Pool Optic illuminator		120/1ph	4	15			1.5	
13. Pool suction cleaner device						2"		
14. Pool suction cleaner device						2		
15. Spa Side controls								1"
16. Pool Side controls								1"
17. In house controls								1"
18. Extra pipe to spa						3		
19. Extra pipe to pool						3		
20. Extra conduit to spa								1"
21. Extra conduit to pool								1"
22. Extra conduit to house								1"

SIZE  
ADWG TYPE  
PIPE SCHEDULE

DWG NO.

JOHNSTON

REV  
0

SCALE

N/A

DATE 9/7/2006

SHEET

PAGE 6 OF 6

1

2

3

4



Water level sensor

Filter heat return

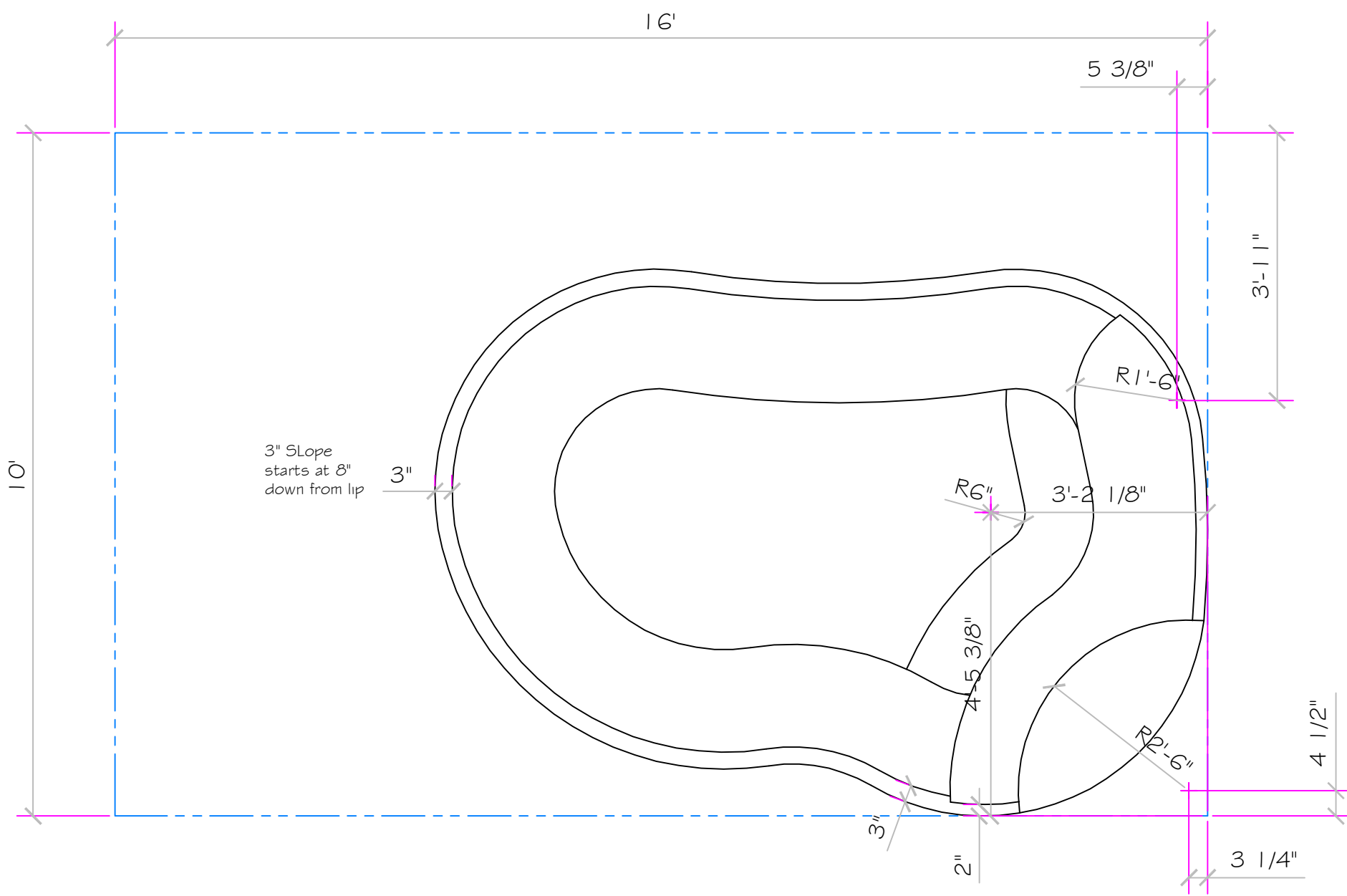
Skimmer

Booster Jet feed

3" water fall suction

Filter pump suction

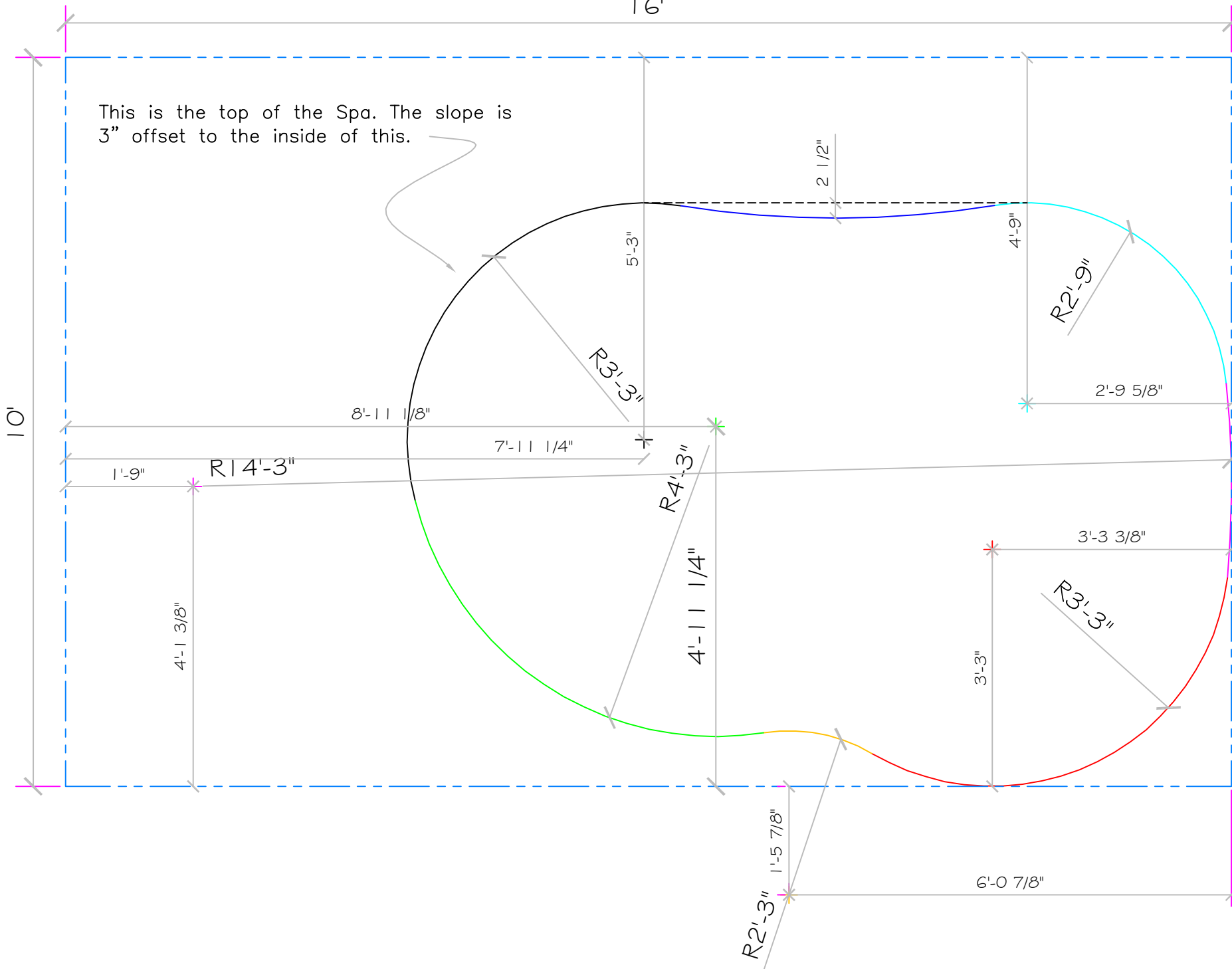
Booster pump suction





16'

This is the top of the Spa. The slope is 3" offset to the inside of this.



1			2	3	4
ZONE	REV	PG.	REVISION DESCRIPTION		DATE
ALL	0	ALL	INITIAL DESIGN		08-06-06
ALL	0	ALL	ADDED PLUMBING AND EQUIPMENT		08-31-06
ALL	0	ALL	ADDED Piping Schedule		09-07-06
ALL	1	ALL	Revised Design Added Slope		03-08-07

A

A

B

B

C

C

D

D

E

E



**NESPA ENTERPRISES INC.**  
 2800 Richter Ave. Suite C  
 Oroville, CA 95966  
 Office: (530) 534-9910  
 Fax: (530) 534-9915  
 E-Mail: sales@tiledspas.com  
 Web Site: www.tiledspas.com  
 \*ALL DIMENSIONS SUBJECT TO 1/4" TOLERANCES\*

# CUSTOM POOL & SPA

## WADE

These drawings, concepts, and details contained herein are the original proprietary designs of NESPA ENTERPRISES, developed over many years of experience in the pool and spa industry and as such are protected by the copyright laws of the United States Government. Reproduction of any of the above without written permission to do so by NESPA ENTERPRISES, is illegal.

SIZE	3/8/2007	DWG NO.	JOHNSTON	REV	1
MISC.			SHEET	TITLE PAGE	

F

F

1

2

3

4