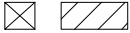


**SKID SUPPORT
STRUCTURE* BONDED
TO SPA**



*SKIDS SUPPLIED
BY NESPA

(A) LIGHT NICHE



SPA BRIGHT, 120 V,
100 WATT, 50' CORD,
U.L. APPROVED

(D) SKIMMER



FRONT ACCESS
SKIMMER, NSF
APPROVED

(F) JET

HYDRO INLETS
1-1/2" WATER - 1-1/2" AIR
HYDROAIR #10-5100
COMPLIES W/ ANSI CODE ASME A112.19.8-07
UL APPROVED

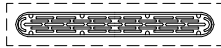
(G) RETURN

INLET FITTINGS
1-1/2" WALL TYPE W/ EYEBALL
HYDROAIR #10-3500
COMPLIES W/ ANSI CODE ASME A112.19.8-07
UL APPROVED

(H) FILL

INLET FITTINGS
1-1/2" WALL TYPE W/ EYEBALL
HYDROAIR #10-3500
COMPLIES W/ ANSI CODE ASME A112.19.8-07
UL APPROVED

(M) MAIN DRAIN



AquaStar 32CDFLFR, 32" Channel Drain,
Approved Max Flow Rate: Floor = 236 GPM
@ 3.4 fps Wall = 136 GPM @ 1.9 fps
V.G.B Approved Safety Drain

(N) HEATER



NATURAL GAS HEATER
PENTAIR / PAC FAB #460531
W/ POWER ASSISTED
VENTILATION,
400,000 BTU

(O) FILTER



CARTRIDGE FILTER
PENTAIR/PAC FAB - CC200
200 SQ. FT. CLEAN &
CLEAR SERIES

**(P) SELF-PRIMING
PUMP AND MOTOR**

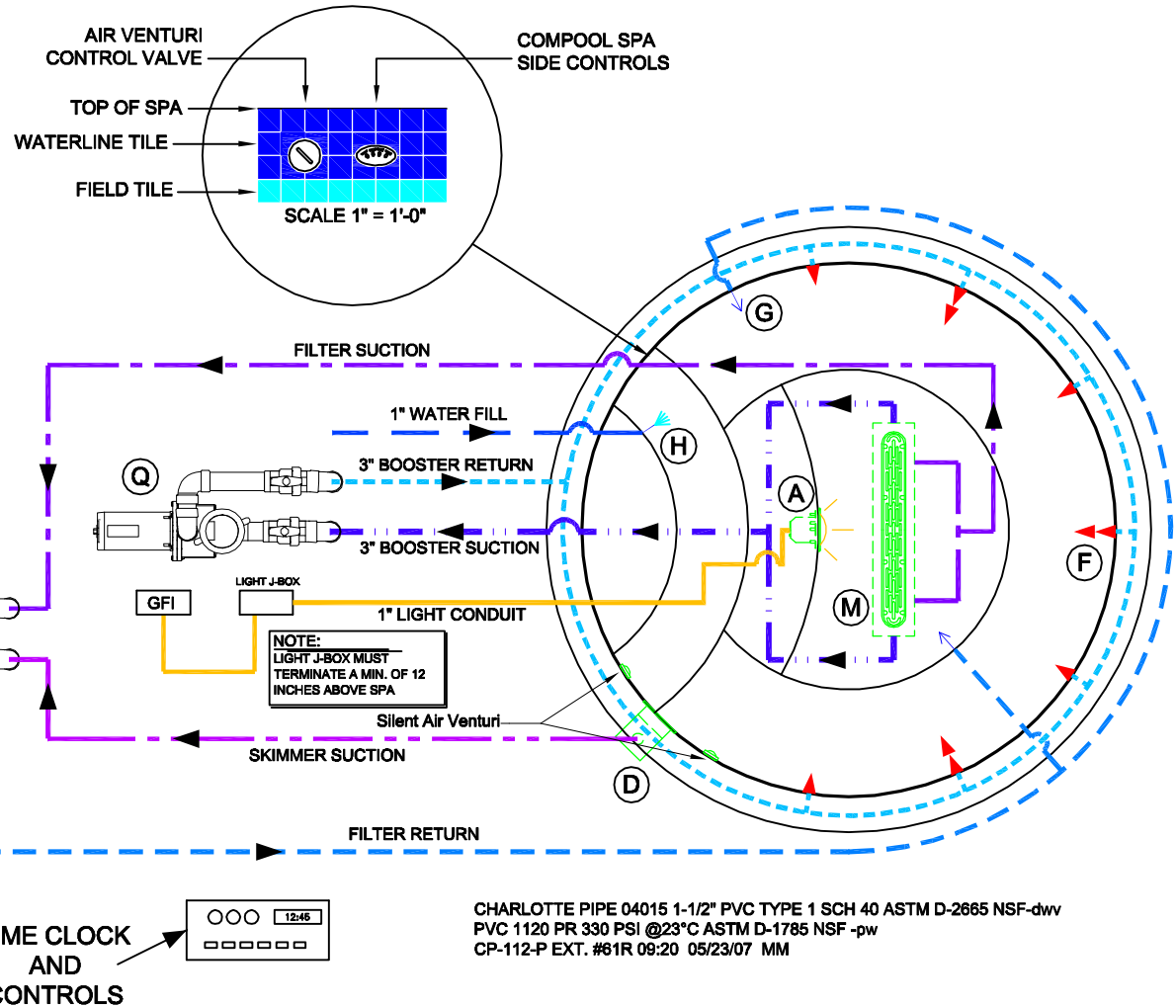


PENTAIR WFE-6
99 GPM @ 60 FT. HEAD,
1 1/2 HP, 230 VOLT, 20 AMP
1 PHASE, 2" DISCHARGE
UNIT WITH PUMP STRAINER

**(Q) SELF-PRIMING
PUMP AND MOTOR**



PENTAIR WFE-12
143 GPM @ 60 FT. HEAD,
3 HP, 230 VOLT, 20 AMP
1 PHASE, 2" DISCHARGE
UNIT WITH PUMP STRAINER



ALL DIMENSIONS SUBJECT TO 1/4" TOLERANCES

These drawings, concepts, and details contained herein are the original proprietary designs of NESPA ENTERPRISES, developed over many years of experience in the pool and spa industry and as such are protected by the copyright laws of the United States Government. Reproduction of any of the above without written permission to do so by NESPA ENTERPRISES, is illegal.

NESPA ENTERPRISES INC.

2800 Richter Ave. Ste. C Oroville, CA 95966

Office: (530) 534-9910

Fax: (530) 534-9915

E-Mail: sales@tiledspas.com

Web Site: www.tiledspas.com



SIZE
A

DWG NAME

RESIDENTIAL SPA DETAILS

DWG TYPE

Layout (1)

SCALE 3/8" = 1'

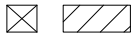
DATE 1/13/2009

SHEET

PAGE 1 OF 1

Jan 13, 2009 - 11:57am

SKID SUPPORT STRUCTURE* BONDED TO SPA



*SKIDS SUPPLIED BY NESPA

(A) LIGHT NICHE



SPA BRIGHT, 120 V, 100 WATT, 50' CORD, U.L. APPROVED

(D) SKIMMER



FRONT ACCESS SKIMMER, NSF APPROVED

(F) JET

HYDRO INLETS
1-1/2" WATER - 1-1/2" AIR
HYDROAIR #10-5100
COMPLIES W/ ANSI CODE ASME A112.19.8-07
UL APPROVED

(G) RETURN

INLET FITTINGS
1-1/2" WALL TYPE W/ EYEBALL
HYDROAIR #10-3500
COMPLIES W/ ANSI CODE ASME A112.19.8-07
UL APPROVED

(H) FILL

INLET FITTINGS
1-1/2" WALL TYPE W/ EYEBALL
HYDROAIR #10-3500
COMPLIES W/ ANSI CODE ASME A112.19.8-07
UL APPROVED

(M) MAIN DRAIN



AquaStar 32CDLFR, 32" Channel Drain,
Approved Max Flow Rate: Floor = 236 GPM
@ 3.4 fps Wall = 136 GPM @ 1.9 fps
V.G.B Approved Safety Drain

(N) HEATER



NATURAL GAS HEATER
PENTAIR / PAC FAB #460531
W/ POWER ASSISTED VENTILATION,
400,000 BTU

(O) FILTER



CARTRIDGE FILTER
PENTAIR/PAC FAB - CC200
200 SQ. FT. CLEAN & CLEAR SERIES

(P) SELF-PRIMING PUMP AND MOTOR

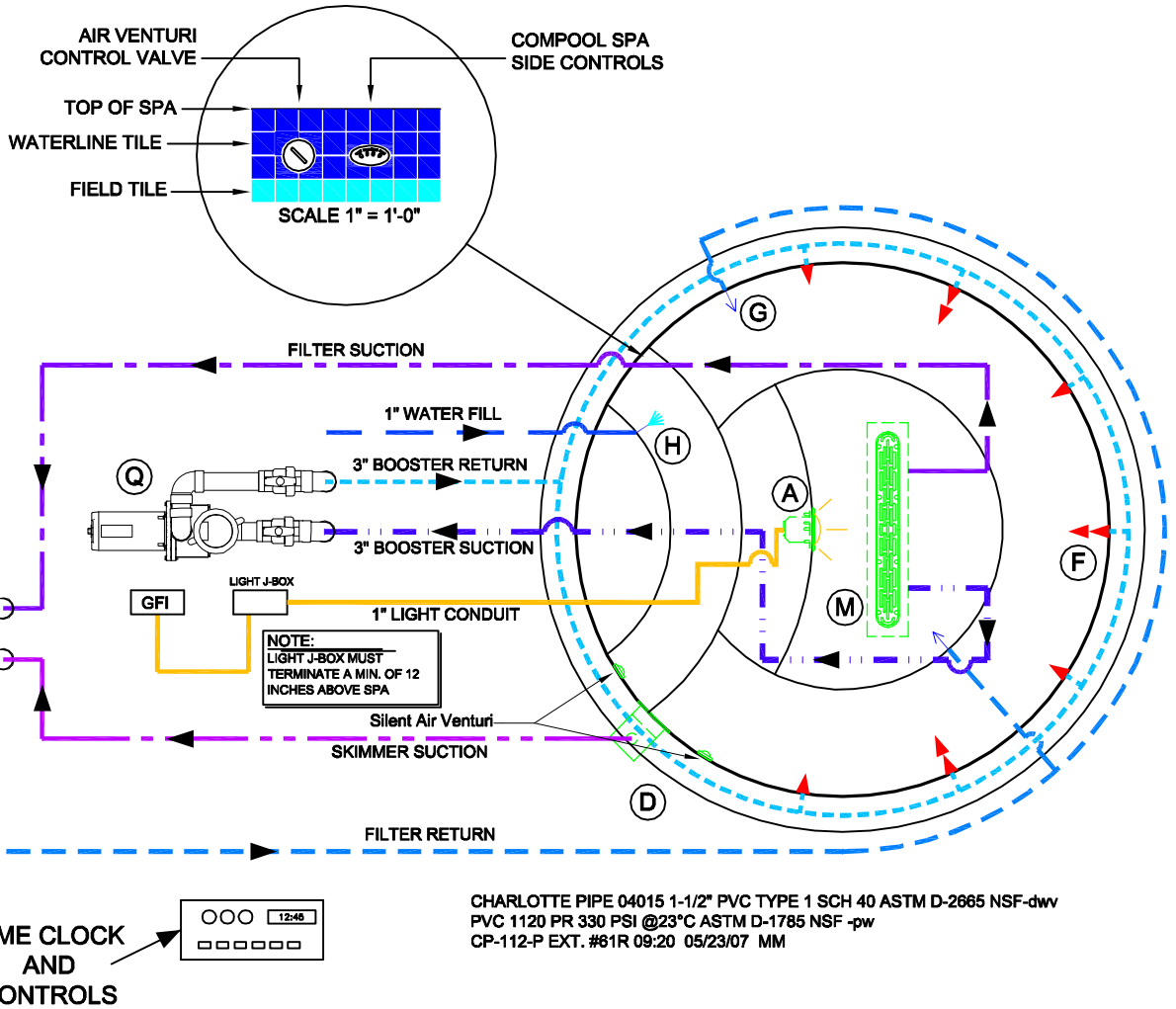


PENTAIR WFE-6
99 GPM @ 60 FT. HEAD,
1 1/2 HP, 230 VOLT, 20 AMP
1 PHASE, 2" DISCHARGE
UNIT WITH PUMP STRAINER

(Q) SELF-PRIMING PUMP AND MOTOR



PENTAIR WFE-12
143 GPM @ 60 FT. HEAD,
3 HP, 230 VOLT, 20 AMP
1 PHASE, 2" DISCHARGE
UNIT WITH PUMP STRAINER



ALL DIMENSIONS SUBJECT TO 1/4" TOLERANCES

These drawings, concepts, and details contained herein are the original proprietary designs of NESPA ENTERPRISES, developed over many years of experience in the pool and spa industry and as such are protected by the copyright laws of the United States Government. Reproduction of any of the above without written permission to do so by NESPA ENTERPRISES, is illegal.

NESPA ENTERPRISES INC.
2800 Richter Ave. Ste. C Oroville, CA 95966
Office: (530) 534-9910 Fax: (530) 534-9915
E-Mail: sales@tiledspas.com Web Site: www.tiledspas.com



SIZE A DWG NAME RESIDENTIAL SPA DETAILS
SCALE 3/8" = 1' DATE 1/13/2009 SHEET PAGE 1 OF 1

DWG TYPE Layout (2)

Jan 13, 2009 - 11:57am

SKID SUPPORT STRUCTURE* BONDED TO SPA



*SKIDS SUPPLIED BY NESPA

(A) LIGHT NICHE



SPA BRIGHT, 120 V, 100 WATT, 50' CORD, U.L. APPROVED

(D) SKIMMER



FRONT ACCESS SKIMMER, NSF APPROVED

(F) JET

HYDRO INLETS
1-1/2" WATER - 1-1/2" AIR
HYDROAIR #10-5100
COMPLIES W/ ANSI CODE ASME A112.19.8-07
UL APPROVED

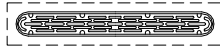
(G) RETURN

INLET FITTINGS
1-1/2" WALL TYPE W/ EYEBALL
HYDROAIR #10-3500
COMPLIES W/ ANSI CODE ASME A112.19.8-07
UL APPROVED

(H) FILL

INLET FITTINGS
1-1/2" WALL TYPE W/ EYEBALL
HYDROAIR #10-3500
COMPLIES W/ ANSI CODE ASME A112.19.8-07
UL APPROVED

(M) MAIN DRAIN



AquaStar 32CDLFR, 32" Channel Drain,
Approved Max Flow Rate: Floor = 236 GPM
@ 3.4 fps Wall = 136 GPM @ 1.9 fps
V.G.B Approved Safety Drain

(N) HEATER



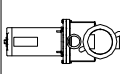
NATURAL GAS HEATER
PENTAIR / PAC FAB #460531
W/ POWER ASSISTED VENTILATION,
400,000 BTU

(O) FILTER



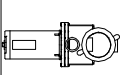
CARTRIDGE FILTER
PENTAIR/PAC FAB - CC200
200 SQ. FT. CLEAN & CLEAR SERIES

(P) SELF-PRIMING PUMP AND MOTOR

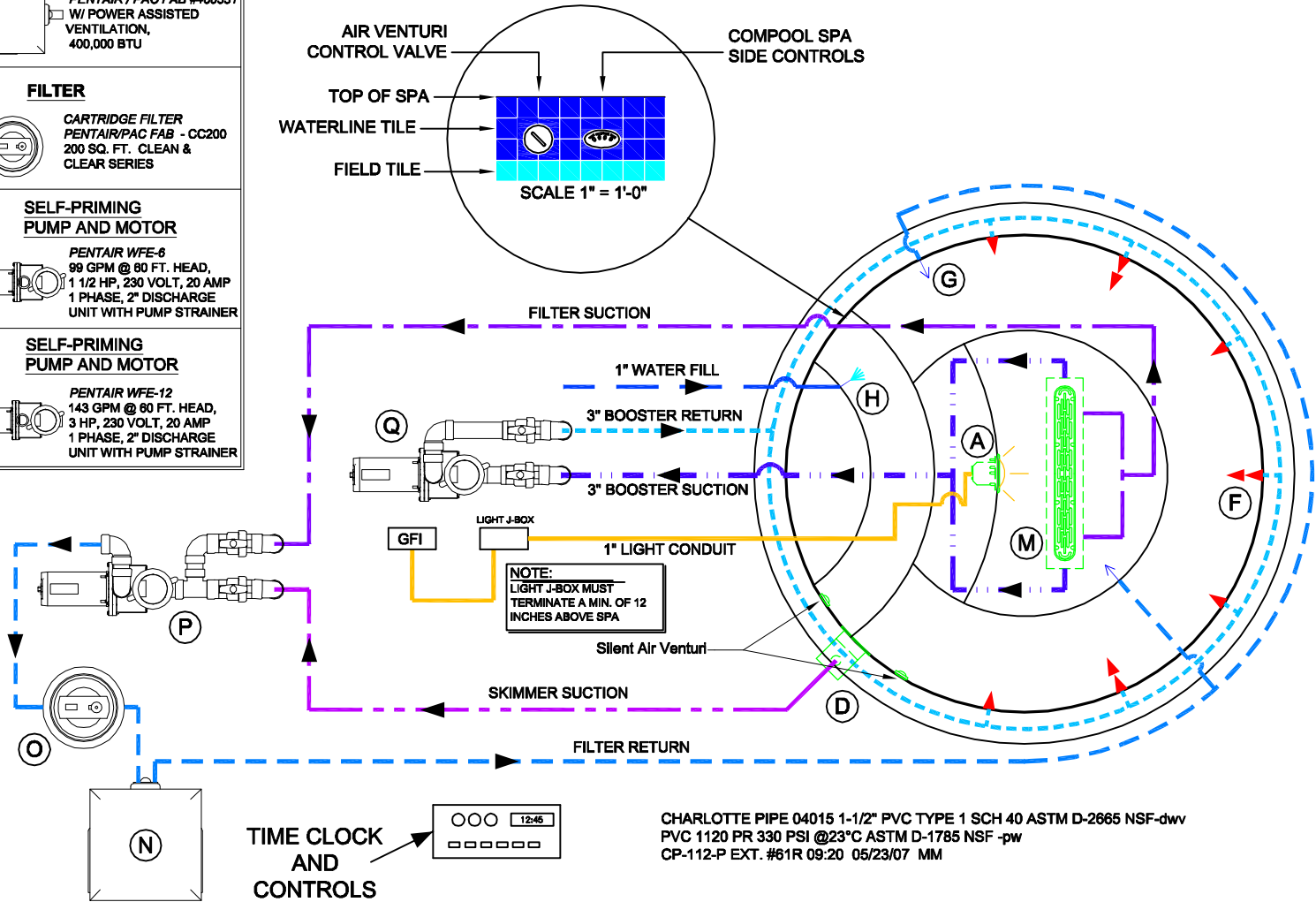


PENTAIR WFE-6
99 GPM @ 80 FT. HEAD,
1 1/2 HP, 230 VOLT, 20 AMP
1 PHASE, 2" DISCHARGE
UNIT WITH PUMP STRAINER

(Q) SELF-PRIMING PUMP AND MOTOR



PENTAIR WFE-12
143 GPM @ 80 FT. HEAD,
3 HP, 230 VOLT, 20 AMP
1 PHASE, 2" DISCHARGE
UNIT WITH PUMP STRAINER



CHARLOTTE PIPE 04015 1-1/2" PVC TYPE 1 SCH 40 ASTM D-2665 NSF-dwv
PVC 1120 PR 330 PSI @23°C ASTM D-1785 NSF -pw
CP-112-P EXT. #61R 09:20 05/23/07 MM

ALL DIMENSIONS SUBJECT TO 1/4" TOLERANCES

These drawings, concepts, and details contained herein are the original proprietary designs of NESPA ENTERPRISES, developed over many years of experience in the pool and spa industry and as such are protected by the copyright laws of the United States Government. Reproduction of any of the above without written permission to do so by NESPA ENTERPRISES, is illegal.

NESPA ENTERPRISES INC.
2800 Richter Ave. Ste. C Oroville, CA 95966
Office: (530) 534-9910 Fax: (530) 534-9915
E-Mail: sales@tiledspas.com Web Site: www.tiledspas.com

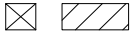


SIZE **A** DWG NAME **RESIDENTIAL SPA DETAILS**
SCALE **3/8" = 1'** DATE **1/13/2009**

DWG TYPE **Layout (3)**
SHEET **PAGE 1 OF 1**

Jan 13, 2009 - 11:58am

SKID SUPPORT STRUCTURE* BONDED TO SPA



*SKIDS SUPPLIED BY NESPA

(A) LIGHT NICHE



SPA BRIGHT, 120 V, 100 WATT, 50' CORD, U.L. APPROVED

(D) SKIMMER



FRONT ACCESS SKIMMER, NSF APPROVED

(F) JET

HYDRO INLETS
1-1/2" WATER - 1-1/2" AIR
HYDROAIR #10-5100
COMPLIES W/ ANSI CODE ASME A112.19.8-07
UL APPROVED

(G) RETURN

INLET FITTINGS
1-1/2" WALL TYPE W/ EYEBALL
HYDROAIR #10-3500
COMPLIES W/ ANSI CODE ASME A112.19.8-07
UL APPROVED

(H) FILL

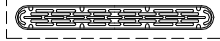
INLET FITTINGS
1-1/2" WALL TYPE W/ EYEBALL
HYDROAIR #10-3500
COMPLIES W/ ANSI CODE ASME A112.19.8-07
UL APPROVED

(L) SIDEWALL SUCTION



Paramount SDX 10"
HIGH FLOW SAFETY DRAIN
Area of Opening = 43.201 in/sq
Velocity @ 200 GPM = 1.485 fps
V.G.B Approved Safety Drain

(M) MAIN DRAIN



AquaStar 32CDFLFR, 32" Channel Drain,
Approved Max Flow Rate: Floor = 236 GPM
@ 3.4 fps Wall = 136 GPM @ 1.9 fps
V.G.B Approved Safety Drain

(N) HEATER



NATURAL GAS HEATER
PENTAIR / PAC FAB #460531
W/ POWER ASSISTED VENTILATION,
400,000 BTU

(O) FILTER



CARTRIDGE FILTER
PENTAIR/PAC FAB - CC200
200 SQ. FT. CLEAN & CLEAR SERIES

(P) SELF-PRIMING PUMP AND MOTOR

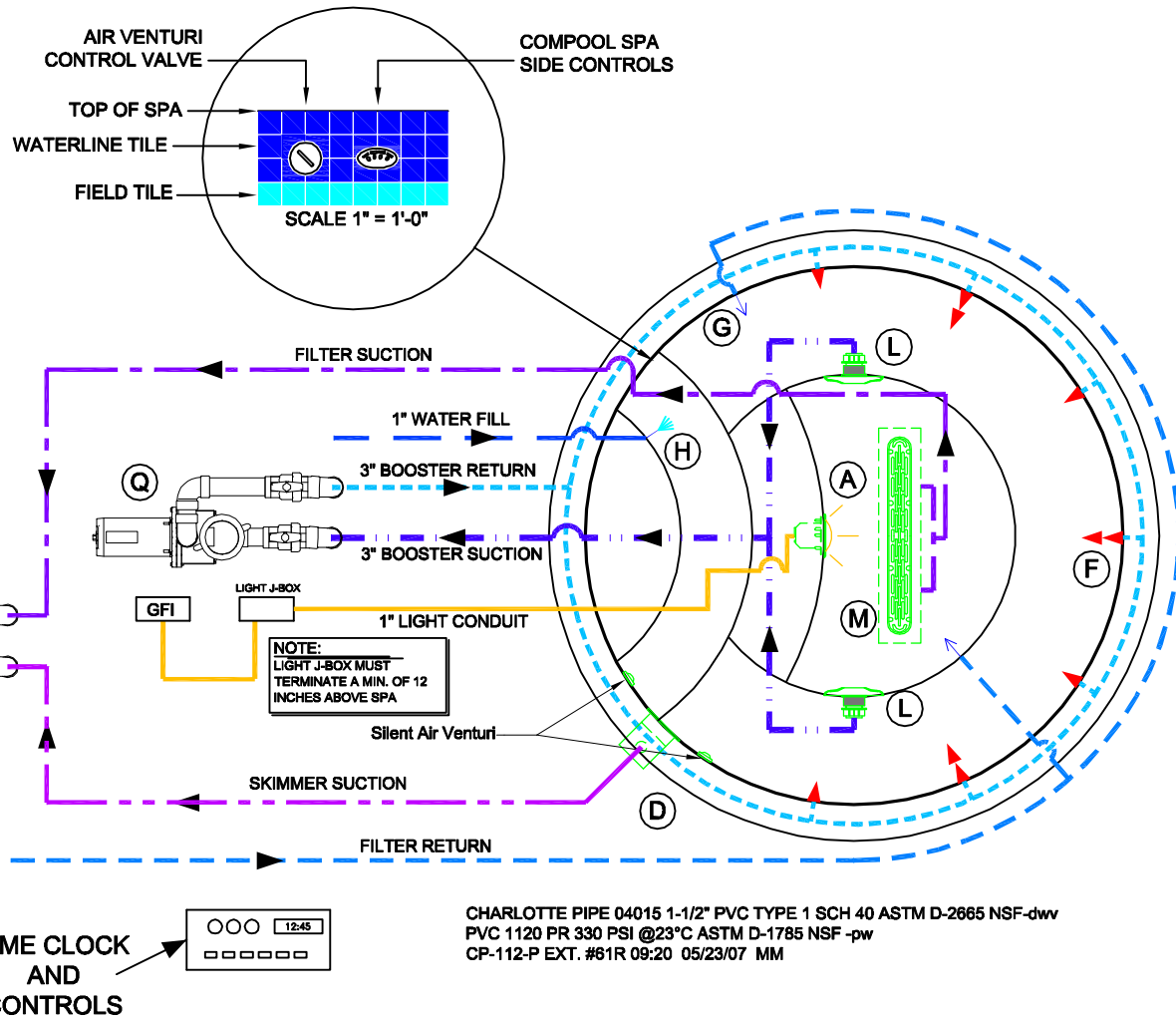


PENTAIR WFE-6
99 GPM @ 60 FT. HEAD,
1 1/2 HP, 230 VOLT, 20 AMP
1 PHASE, 2" DISCHARGE
UNIT WITH PUMP STRAINER

(Q) SELF-PRIMING PUMP AND MOTOR



PENTAIR WFE-12
143 GPM @ 60 FT. HEAD,
3 HP, 230 VOLT, 20 AMP
1 PHASE, 2" DISCHARGE
UNIT WITH PUMP STRAINER



CHARLOTTE PIPE 04015 1-1/2" PVC TYPE 1 SCH 40 ASTM D-2665 NSF-dww
PVC 1120 PR 330 PSI @23°C ASTM D-1785 NSF -pw
CP-112-P EXT. #61R 09:20 05/23/07 MM

ALL DIMENSIONS SUBJECT TO 1/4" TOLERANCES

Jan 13, 2009 - 11:58am

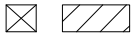
These drawings, concepts, and details contained herein are the original proprietary designs of NESPA ENTERPRISES, developed over many years of experience in the pool and spa industry and as such are protected by the copyright laws of the United States Government. Reproduction of any of the above without written permission to do so by NESPA ENTERPRISES, is illegal.

NESPA ENTERPRISES INC.
2800 Richter Ave. Ste. C Oroville, CA 95966
Office: (530) 534-9910 Fax: (530) 534-9915
E-Mail: sales@tiledspas.com Web Site: www.tiledspas.com



SIZE A	DWG NAME RESIDENTIAL SPA DETAILS	DWG TYPE Layout (4)
SCALE 3/8" = 1'	DATE 1/13/2009	SHEET PAGE 1 OF 1

**SKID SUPPORT
STRUCTURE* BONDED
TO SPA**



*SKIDS SUPPLIED
BY NESPA

(A) LIGHT NICHE



SPA BRIGHT, 120 V,
100 WATT, 50' CORD,
U.L. APPROVED

(D) SKIMMER



FRONT ACCESS
SKIMMER, NSF
APPROVED

(F) JET



HYDRO INLETS
1-1/2" WATER - 1-1/2" AIR
HYDROAIR #10-5100
COMPLIES W/ ANSI CODE ASME A112.19.8-07
UL APPROVED

(G) RETURN



INLET FITTINGS
1-1/2" WALL TYPE W/ EYEBALL
HYDROAIR #10-3500
COMPLIES W/ ANSI CODE ASME A112.19.8-07
UL APPROVED

(H) FILL



INLET FITTINGS
1-1/2" WALL TYPE W/ EYEBALL
HYDROAIR #10-3500
COMPLIES W/ ANSI CODE ASME A112.19.8-07
UL APPROVED

(L) SIDEWALL SUCTION



Paramount SDX 10"
HIGH FLOW SAFETY DRAIN
Area of Opening = 43.201 in/sq
Velocity @ 200 GPM = 1.485 fps
V.G.B Approved Safety Drain

(M) MAIN DRAIN



AquaStar 8AV, 8" Dia Frame,
Approved Max Flow Rate:
Floor = 88 GPM @ 3.2 fps
Wall = 70 GPM @ 2.6 fps
8.8 Sq In - Open Area
V.G.B Approved Safety Drain

(N) HEATER



NATURAL GAS HEATER
PENTAIR / PAC FAB #480531
W/ POWER ASSISTED
VENTILATION,
400,000 BTU

(O) FILTER



CARTRIDGE FILTER
PENTAIR/PAC FAB - CC200
200 SQ. FT. CLEAN &
CLEAR SERIES

**(P) SELF-PRIMING
PUMP AND MOTOR**

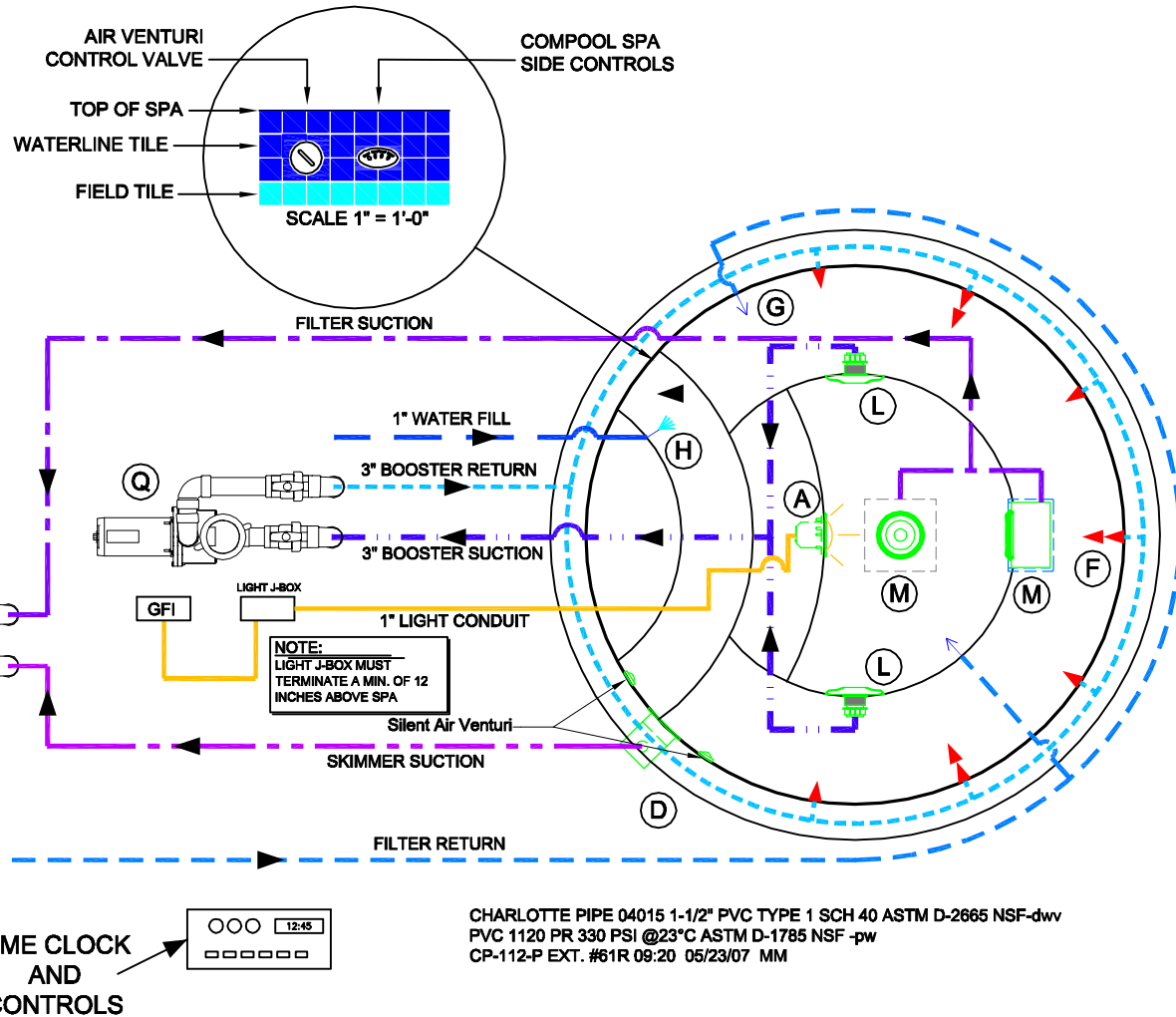


PENTAIR WFE-6
99 GPM @ 80 FT. HEAD,
1 1/2 HP, 230 VOLT, 20 AMP
1 PHASE, 2" DISCHARGE
UNIT WITH PUMP STRAINER

**(Q) SELF-PRIMING
PUMP AND MOTOR**

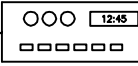


PENTAIR WFE-12
143 GPM @ 80 FT. HEAD,
3 HP, 230 VOLT, 20 AMP
1 PHASE, 2" DISCHARGE
UNIT WITH PUMP STRAINER



NOTE:
LIGHT J-BOX MUST
TERMINATE A MIN. OF 12
INCHES ABOVE SPA

TIME CLOCK
AND
CONTROLS



CHARLOTTE PIPE 04015 1-1/2" PVC TYPE 1 SCH 40 ASTM D-2665 NSF-dwv
PVC 1120 PR 330 PSI @23°C ASTM D-1785 NSF -pw
CP-112-P EXT. #61R 09:20 05/23/07 MM

ALL DIMENSIONS SUBJECT TO 1/4" TOLERANCES

Jan 13, 2009 - 11:58am

These drawings, concepts, and details contained herein are the original proprietary designs of NESPA ENTERPRISES, developed over many years of experience in the pool and spa industry and as such are protected by the copyright laws of the United States Government. Reproduction of any of the above without written permission to do so by NESPA ENTERPRISES, is illegal.

NESPA ENTERPRISES INC.

2800 Richter Ave. Ste. C Oroville, CA 95966

Office: (530) 534-9910

Fax: (530) 534-9915

E-Mail: sales@tiledspas.com

Web Site: www.tiledspas.com



SIZE
A

DWG NAME

RESIDENTIAL SPA DETAILS

DWG TYPE

Layout (5)

SCALE 3/8" = 1'

DATE 1/13/2009

SHEET

PAGE 1 OF 1

SKID SUPPORT STRUCTURE* BONDED TO SPA



*SKIDS SUPPLIED BY NESPA

(A) LIGHT NICHE



SPA BRIGHT, 120 V, 100 WATT, 50' CORD, U.L. APPROVED

(D) SKIMMER



FRONT ACCESS SKIMMER, NSF APPROVED

(F) JET

HYDRO INLETS
1-1/2" WATER - 1-1/2" AIR
HYDROAIR #10-5100
COMPLIES W/ ANSI CODE ASME A112.19.8-07
UL APPROVED

(G) RETURN

INLET FITTINGS
1-1/2" WALL TYPE W/ EYEBALL
HYDROAIR #10-3500
COMPLIES W/ ANSI CODE ASME A112.19.8-07
UL APPROVED

(H) FILL

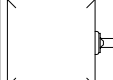
INLET FITTINGS
1-1/2" WALL TYPE W/ EYEBALL
HYDROAIR #10-3500
COMPLIES W/ ANSI CODE ASME A112.19.8-07
UL APPROVED

(M) MAIN DRAIN



AquaStar WAV12, 12" X 12" Frame,
Approved Max Flow Rate:
Floor/Wall = 361 GPM @ 1.3 fps
Floor/Wall = 400 GPM @ 1.5 fps
85.2 Sq In - Open Area
V.G.B Approved Safety Drain

(N) HEATER



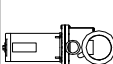
NATURAL GAS HEATER
PENTAIR / PAC FAB #460631
W/ POWER ASSISTED VENTILATION,
400,000 BTU

(O) FILTER



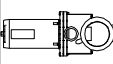
CARTRIDGE FILTER
PENTAIR/PAC FAB - CC200
200 SQ. FT. CLEAN & CLEAR SERIES

(P) SELF-PRIMING PUMP AND MOTOR

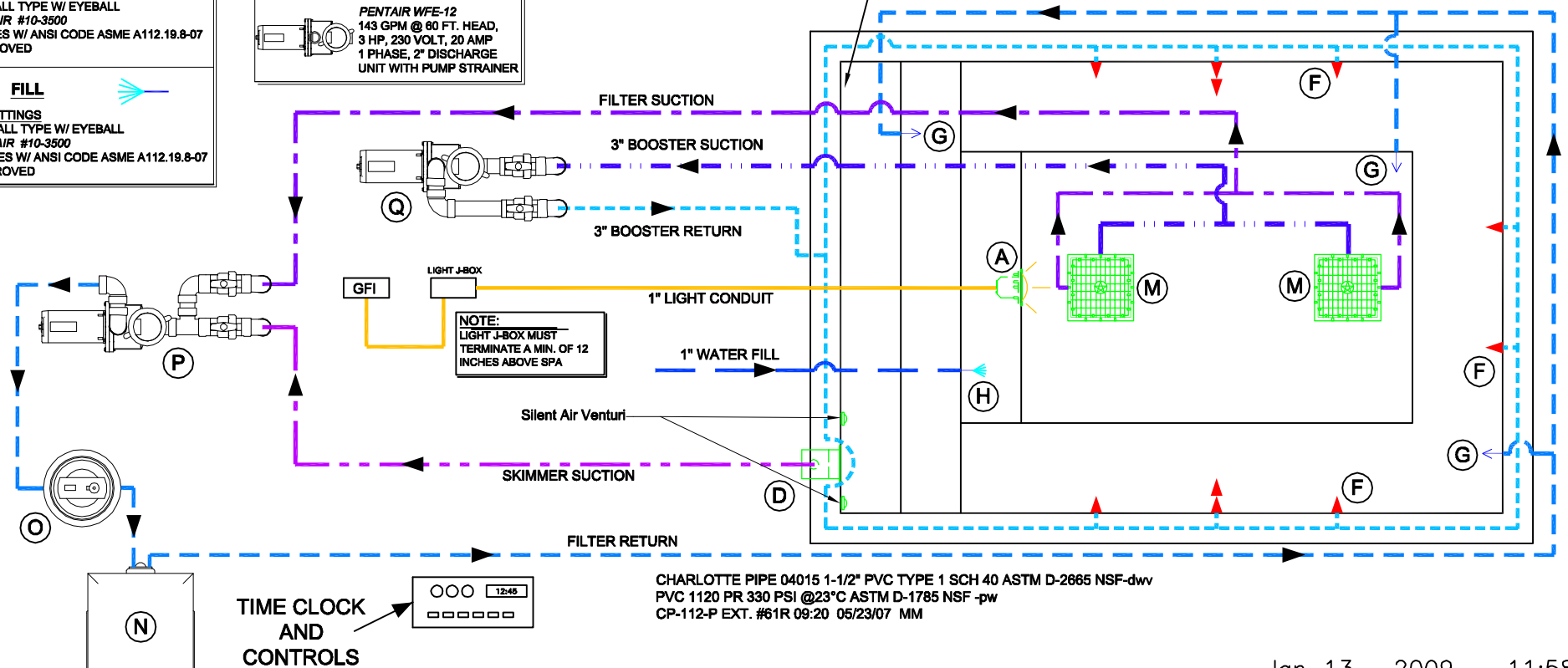
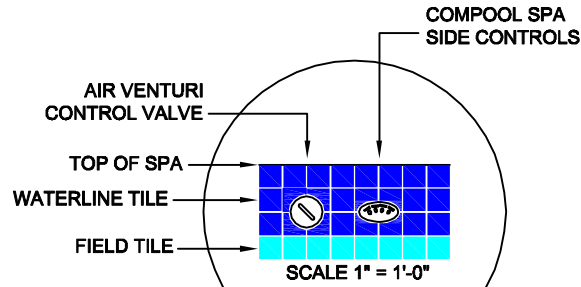


PENTAIR WFE-6
99 GPM @ 80 FT. HEAD,
1 1/2 HP, 230 VOLT, 20 AMP
1 PHASE, 2" DISCHARGE
UNIT WITH PUMP STRAINER

(Q) SELF-PRIMING PUMP AND MOTOR

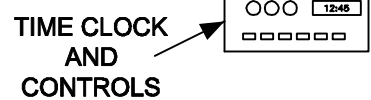


PENTAIR WFE-12
143 GPM @ 80 FT. HEAD,
3 HP, 230 VOLT, 20 AMP
1 PHASE, 2" DISCHARGE
UNIT WITH PUMP STRAINER



NOTE:
LIGHT J-BOX MUST TERMINATE A MIN. OF 12 INCHES ABOVE SPA

CHARLOTTE PIPE 04015 1-1/2" PVC TYPE 1 SCH 40 ASTM D-2665 NSF-dwv
PVC 1120 PR 330 PSI @23°C ASTM D-1785 NSF -pw
CP-112-P EXT. #61R 09:20 05/23/07 MM



ALL DIMENSIONS SUBJECT TO 1/4" TOLERANCES

Jan 13, 2009 - 11:58am

These drawings, concepts, and details contained herein are the original proprietary designs of NESPA ENTERPRISES, developed over many years of experience in the pool and spa industry and as such are protected by the copyright laws of the United States Government. Reproduction of any of the above without written permission to do so by NESPA ENTERPRISES, is illegal.

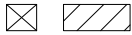
NESPA ENTERPRISES INC.
2800 Richter Ave. Ste. C Oroville, CA 95966
Office: (530) 534-9910 Fax: (530) 534-9915
E-Mail: sales@tiledspas.com Web Site: www.tiledspas.com



SIZE A	DWG NAME RESIDENTIAL SPA DETAILS
SCALE 3/8" = 1'	DATE 1/13/2009

DWG TYPE Layout (6)
SHEET PAGE 1 OF 1

SKID SUPPORT STRUCTURE* BONDED TO SPA



*SKIDS SUPPLIED BY NESPA

(A) LIGHT NICHE



SPA BRIGHT, 120 V, 100 WATT, 50' CORD, U.L. APPROVED

(D) SKIMMER



FRONT ACCESS SKIMMER, NSF APPROVED

(F) JET

HYDRO INLETS
1-1/2" WATER - 1-1/2" AIR
HYDROAIR #10-5100
COMPLIES W/ ANSI CODE ASME A112.19.8-07
UL APPROVED

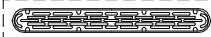
(G) RETURN

INLET FITTINGS
1-1/2" WALL TYPE W/ EYEBALL
HYDROAIR #10-3500
COMPLIES W/ ANSI CODE ASME A112.19.8-07
UL APPROVED

(H) FILL

INLET FITTINGS
1-1/2" WALL TYPE W/ EYEBALL
HYDROAIR #10-3500
COMPLIES W/ ANSI CODE ASME A112.19.8-07
UL APPROVED

(M) MAIN DRAIN



AquaStar 32CDFLFR, 32" Channel Drain,
Approved Max Flow Rate: Floor = 236 GPM
@ 3.4 fps Wall = 136 GPM @ 1.9 fps
V.G.B Approved Safety Drain

(N) HEATER



NATURAL GAS HEATER
PENTAIR / PAC FAB #460531
W/ POWER ASSISTED VENTILATION,
400,000 BTU

(O) FILTER



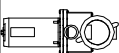
CARTRIDGE FILTER
PENTAIR/PAC FAB - CC200
200 SQ. FT. CLEAN & CLEAR SERIES

(P) SELF-PRIMING PUMP AND MOTOR

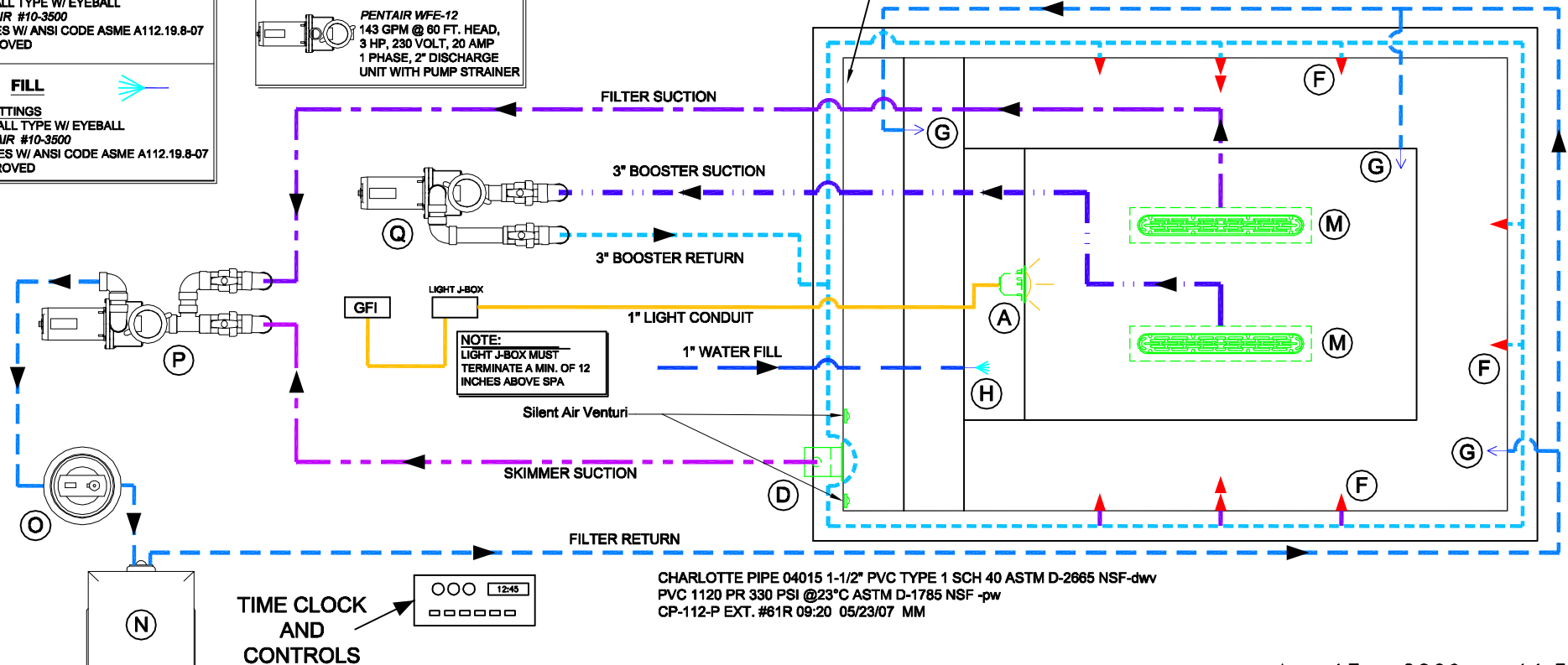
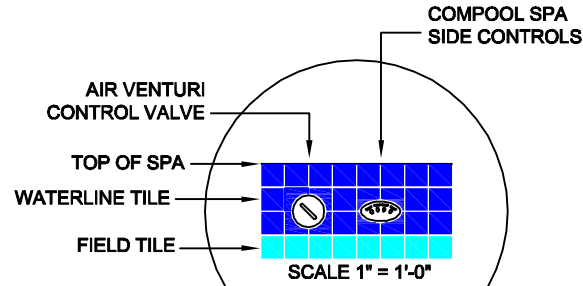


PENTAIR WFE-6
99 GPM @ 80 FT. HEAD,
1 1/2 HP, 230 VOLT, 20 AMP
1 PHASE, 2" DISCHARGE
UNIT WITH PUMP STRAINER

(Q) SELF-PRIMING PUMP AND MOTOR



PENTAIR WFE-12
143 GPM @ 80 FT. HEAD,
3 HP, 230 VOLT, 20 AMP
1 PHASE, 2" DISCHARGE
UNIT WITH PUMP STRAINER



CHARLOTTE PIPE 04015 1-1/2" PVC TYPE 1 SCH 40 ASTM D-2665 NSF-dwv
PVC 1120 PR 330 PSI @23°C ASTM D-1785 NSF -pw
CP-112-P EXT. #61R 09:20 05/23/07 MM

ALL DIMENSIONS SUBJECT TO 1/4" TOLERANCES

Jan 13, 2009 - 11:58am

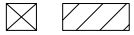
These drawings, concepts, and details contained herein are the original proprietary designs of NESPA ENTERPRISES, developed over many years of experience in the pool and spa industry and as such are protected by the copyright laws of the United States Government. Reproduction of any of the above without written permission to do so by NESPA ENTERPRISES, is illegal.

NESPA ENTERPRISES INC.
2800 Richter Ave. Ste. C Oroville, CA 95966
Office: (530) 534-9910 Fax: (530) 534-9915
E-Mail: sales@tiledspas.com Web Site: www.tiledspas.com



SIZE A	DWG NAME RESIDENTIAL SPA DETAILS	DWG TYPE Layout (7)
SCALE 3/8" = 1'	DATE 1/13/2009	SHEET PAGE 1 OF 1

SKID SUPPORT STRUCTURE* BONDED TO SPA



*SKIDS SUPPLIED BY NESPA

(A) LIGHT NICHE



SPA BRIGHT, 120 V, 100 WATT, 50' CORD, U.L. APPROVED

(D) SKIMMER



FRONT ACCESS SKIMMER, NSF APPROVED

(F) JET

HYDRO INLETS
1-1/2" WATER - 1-1/2" AIR
HYDROAIR #10-5100
COMPLIES W/ ANSI CODE ASME A112.19.8-07
UL APPROVED

(G) RETURN

INLET FITTINGS
1-1/2" WALL TYPE W/ EYEBALL
HYDROAIR #10-3500
COMPLIES W/ ANSI CODE ASME A112.19.8-07
UL APPROVED

(H) FILL

INLET FITTINGS
1-1/2" WALL TYPE W/ EYEBALL
HYDROAIR #10-3500
COMPLIES W/ ANSI CODE ASME A112.19.8-07
UL APPROVED

(L) SIDEWALL SUCTION



Paramount SDX 10" HIGH FLOW SAFETY DRAIN
Area of Opening = 43.201 in/sq
Velocity @ 200 GPM = 1.485 fps
V.G.B Approved Safety Drain

(M) MAIN DRAIN



AquaStar 10AV, 10" Dia Frame, Approved Max Flow Rate:
Floor = 206 GPM @ 5.8 fps
Wall = 96 GPM @ 2.8 fps
Max Flow = 210GPM
V.G.B Approved Safety Drain

(N) HEATER



NATURAL GAS HEATER
PENTAIR / PAC FAB #480531
W/ POWER ASSISTED VENTILATION,
400,000 BTU

(O) FILTER



CARTRIDGE FILTER PENTAIR/PAC
FAB - CC200 200 SQ. FT. CLEAN & CLEAR SERIES

(P) SELF-PRIMING PUMP AND MOTOR

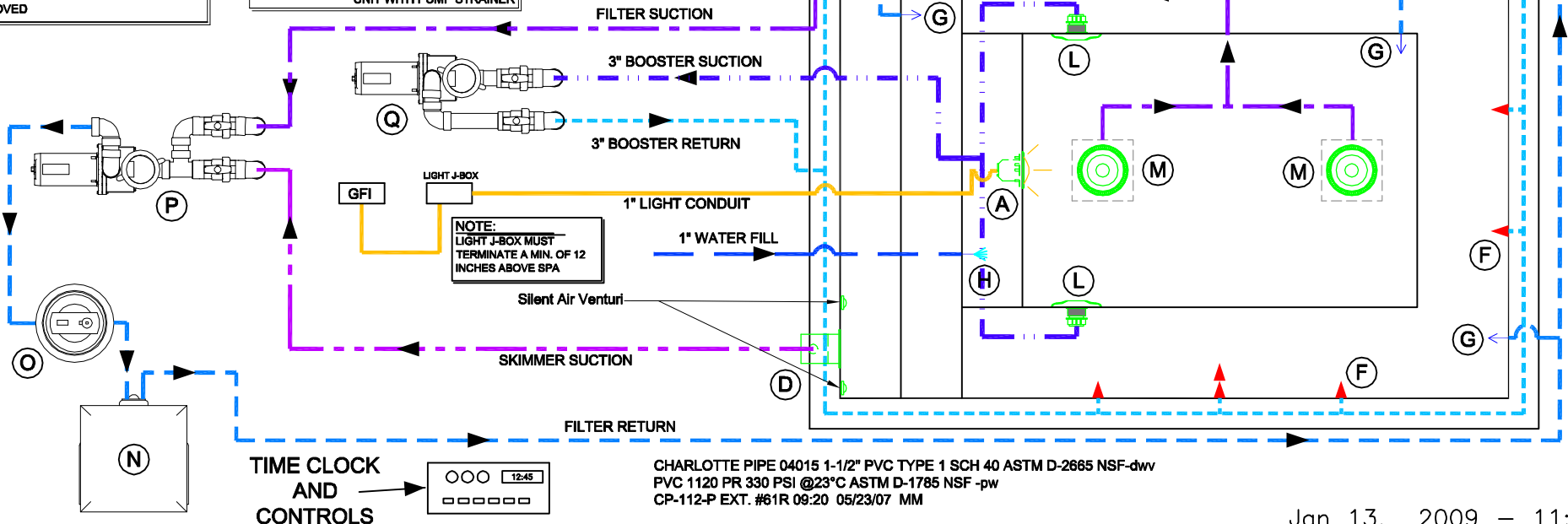
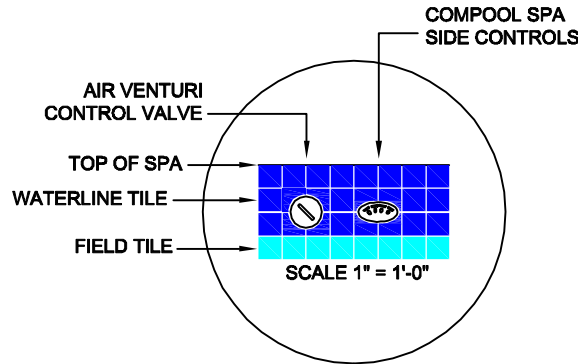


PENTAIR WFE-6
99 GPM @ 80 FT. HEAD,
1 1/2 HP, 230 VOLT, 20 AMP
1 PHASE, 2" DISCHARGE
UNIT WITH PUMP STRAINER

(Q) SELF-PRIMING PUMP AND MOTOR



PENTAIR WFE-12
143 GPM @ 80 FT. HEAD,
3 HP, 230 VOLT, 20 AMP
1 PHASE, 2" DISCHARGE
UNIT WITH PUMP STRAINER



NOTE:
LIGHT J-BOX MUST TERMINATE A MIN. OF 12 INCHES ABOVE SPA

CHARLOTTE PIPE 04015 1-1/2" PVC TYPE 1 SCH 40 ASTM D-2665 NSF-dwv
PVC 1120 PR 330 PSI @23°C ASTM D-1785 NSF -pw
CP-112-P EXT. #61R 09:20 05/23/07 MM

ALL DIMENSIONS SUBJECT TO 1/4" TOLERANCES

Jan 13, 2009 - 11:58am

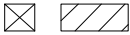
These drawings, concepts, and details contained herein are the original proprietary designs of NESPA ENTERPRISES, developed over many years of experience in the pool and spa industry and as such are protected by the copyright laws of the United States Government. Reproduction of any of the above without written permission to do so by NESPA ENTERPRISES, is illegal.

NESPA ENTERPRISES INC.
2800 Richter Ave. Ste. C Oroville, CA 95966
Office: (530) 534-9910 Fax: (530) 534-9915
E-Mail: sales@tiledspas.com Web Site: www.tiledspas.com



SIZE A	DWG NAME RESIDENTIAL SPA DETAILS	DWG TYPE Layout (8)
SCALE 3/8" = 1'	DATE 1/13/2009	SHEET PAGE 1 OF 1

**SKID SUPPORT
STRUCTURE* BONDED
TO SPA**



*SKIDS SUPPLIED
BY NESPA

(A) LIGHT NICHE



SPA BRIGHT, 120 V,
100 WATT, 50' CORD,
U.L. APPROVED

(D) SKIMMER



FRONT ACCESS
SKIMMER, NSF
APPROVED

(F) JET

HYDRO INLETS
1-1/2" WATER - 1-1/2" AIR
HYDROAIR #10-5100
COMPLIES W/ ANSI CODE ASME A112.19.8-07
UL APPROVED

(G) RETURN

INLET FITTINGS
1-1/2" WALL TYPE W/ EYEBALL
HYDROAIR #10-3500
COMPLIES W/ ANSI CODE ASME A112.19.8-07
UL APPROVED

(H) FILL

INLET FITTINGS
1-1/2" WALL TYPE W/ EYEBALL
HYDROAIR #10-3500
COMPLIES W/ ANSI CODE ASME A112.19.8-07
UL APPROVED

(M) MAIN DRAIN



AquaStar 32CDFLFR, 32" Channel Drain,
Approved Max Flow Rate: Floor = 236 GPM
@ 3.4 fps Wall = 136 GPM @ 1.9 fps
V.G.B Approved Safety Drain

(N) HEATER



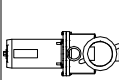
NATURAL GAS HEATER
PENTAIR / PAC FAB #460531
W/ POWER ASSISTED
VENTILATION,
400,000 BTU

(O) FILTER



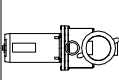
CARTRIDGE FILTER
PENTAIR/PAC FAB - CC200
200 SQ. FT. CLEAN &
CLEAR SERIES

**(P) SELF-PRIMING
PUMP AND MOTOR**

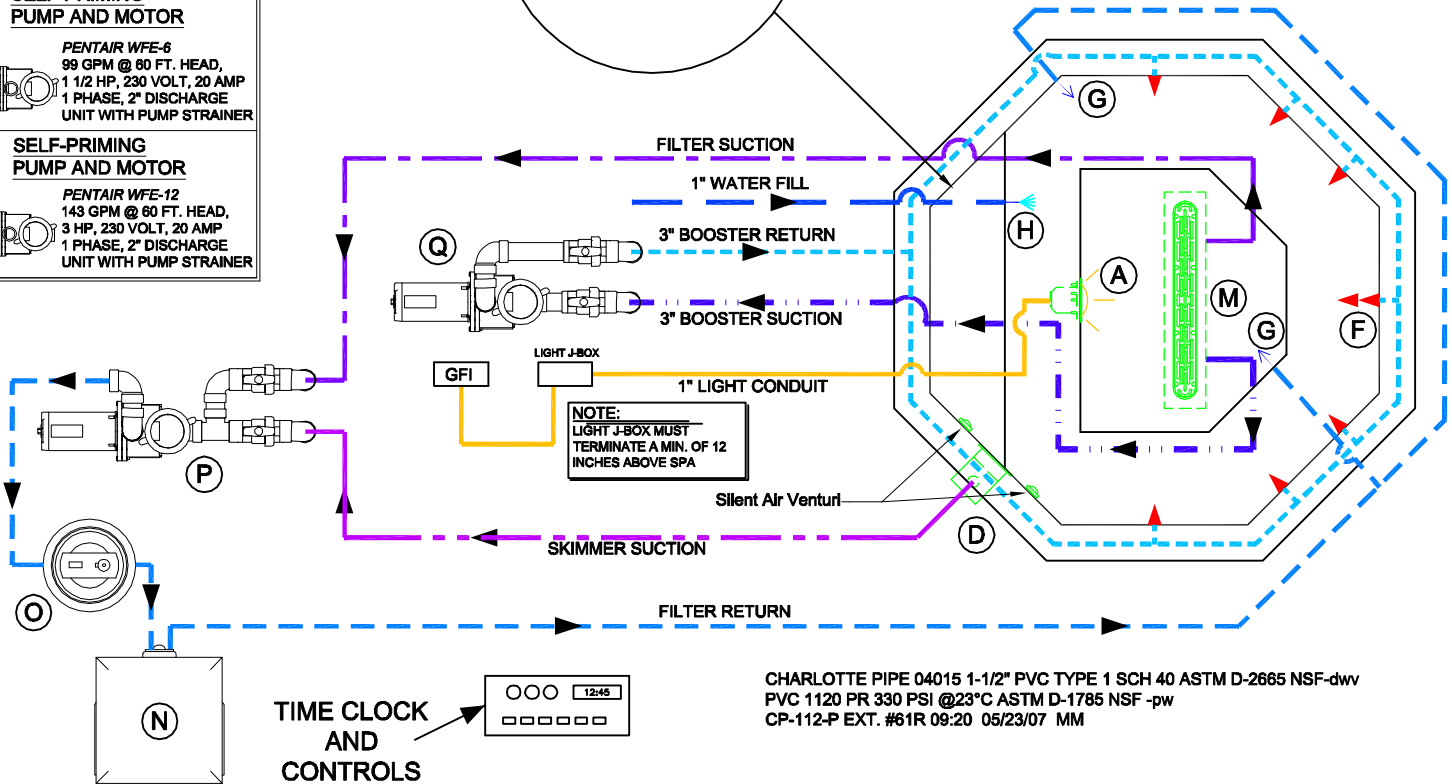
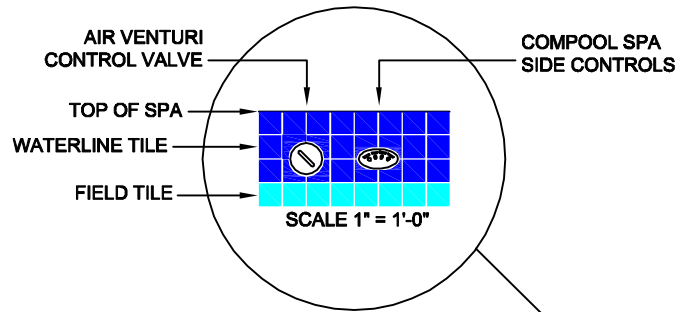


PENTAIR WFE-6
99 GPM @ 60 FT. HEAD,
1 1/2 HP, 230 VOLT, 20 AMP
1 PHASE, 2" DISCHARGE
UNIT WITH PUMP STRAINER

**(Q) SELF-PRIMING
PUMP AND MOTOR**



PENTAIR WFE-12
143 GPM @ 60 FT. HEAD,
3 HP, 230 VOLT, 20 AMP
1 PHASE, 2" DISCHARGE
UNIT WITH PUMP STRAINER



CHARLOTTE PIPE 04015 1-1/2" PVC TYPE 1 SCH 40 ASTM D-2665 NSF-dww
PVC 1120 PR 330 PSI @23°C ASTM D-1785 NSF -pw
CP-112-P EXT. #61R 09:20 05/23/07 MM

ALL DIMENSIONS SUBJECT TO 1/4" TOLERANCES

Jan 13, 2009 - 11:58am

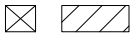
These drawings, concepts, and details contained herein are the original proprietary designs of NESPA ENTERPRISES, developed over many years of experience in the pool and spa industry and as such are protected by the copyright laws of the United States Government. Reproduction of any of the above without written permission to do so by NESPA ENTERPRISES, is illegal.

NESPA ENTERPRISES INC.
2800 Richter Ave. Ste. C Oroville, CA 95966
Office: (530) 534-9910 Fax: (530) 534-9915
E-Mail: sales@tiledspas.com Web Site: www.tiledspas.com



SIZE A	DWG NAME RESIDENTIAL SPA DETAILS	DWG TYPE Layout (9)
SCALE 3/8" = 1'	DATE 1/13/2009	SHEET PAGE 1 OF 1

**SKID SUPPORT
STRUCTURE* BONDED
TO SPA**



*SKIDS SUPPLIED
BY NESPA

(A) LIGHT NICHE



SPA BRIGHT, 120 V,
100 WATT, 50' CORD,
U.L. APPROVED

(D) SKIMMER



FRONT ACCESS
SKIMMER, NSF
APPROVED

(F) JET



HYDRO INLETS
1-1/2" WATER - 1-1/2" AIR
HYDROAIR #10-5100
COMPLIES W/ ANSI CODE ASME A112.19.8-07
UL APPROVED

(G) RETURN



INLET FITTINGS
1-1/2" WALL TYPE W/ EYEBALL
HYDROAIR #10-3500
COMPLIES W/ ANSI CODE ASME A112.19.8-07
UL APPROVED

(H) FILL



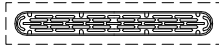
INLET FITTINGS
1-1/2" WALL TYPE W/ EYEBALL
HYDROAIR #10-3500
COMPLIES W/ ANSI CODE ASME A112.19.8-07
UL APPROVED

(L) SIDEWALL SUCTION



Paramount SDX 10"
HIGH FLOW SAFETY DRAIN
Area of Opening = 43.201 In/sq
Velocity @ 200 GPM = 1.485 fps
V.G.B Approved Safety Drain

(M) MAIN DRAIN



AquaStar 32CDLFR, 32" Channel Drain,
Approved Max Flow Rate: Floor = 236 GPM
@ 3.4 fps Wall = 136 GPM @ 1.9 fps
V.G.B Approved Safety Drain

(N) HEATER



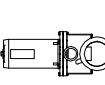
NATURAL GAS HEATER
PENTAIR / PAC FAB #460531
W/ POWER ASSISTED
VENTILATION,
400,000 BTU

(O) FILTER



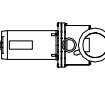
CARTRIDGE FILTER
PENTAIR/PAC FAB - CC200
200 SQ. FT. CLEAN &
CLEAR SERIES

**(P) SELF-PRIMING
PUMP AND MOTOR**

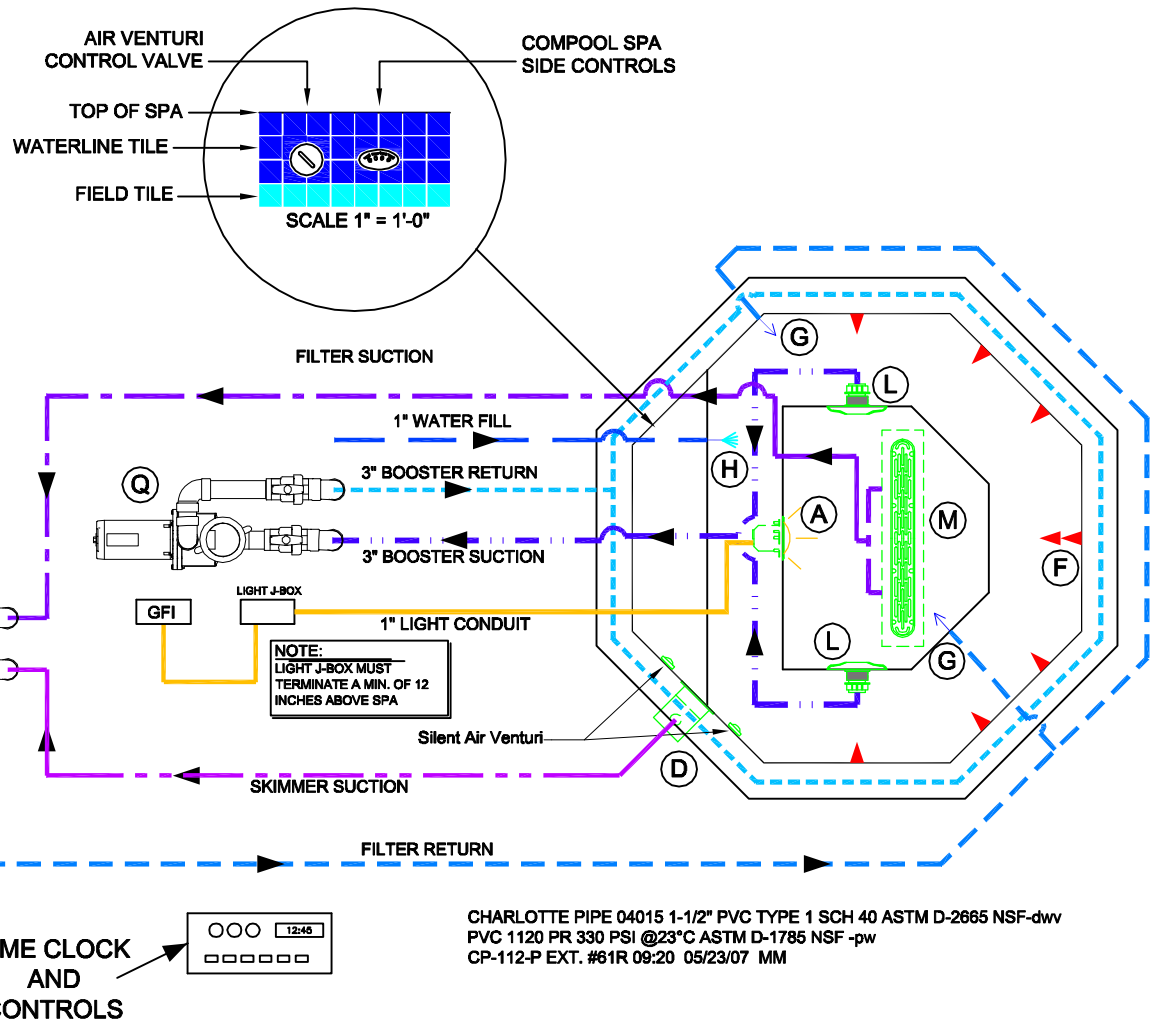


PENTAIR WFE-6
99 GPM @ 60 FT. HEAD,
1 1/2 HP, 230 VOLT, 20 AMP
1 PHASE, 2" DISCHARGE
UNIT WITH PUMP STRAINER

**(Q) SELF-PRIMING
PUMP AND MOTOR**



PENTAIR WFE-12
143 GPM @ 60 FT. HEAD,
3 HP, 230 VOLT, 20 AMP
1 PHASE, 2" DISCHARGE
UNIT WITH PUMP STRAINER



CHARLOTTE PIPE 04015 1-1/2" PVC TYPE 1 SCH 40 ASTM D-2665 NSF-dwr
PVC 1120 PR 330 PSI @23°C ASTM D-1785 NSF -pw
CP-112-P EXT. #61R 09:20 05/23/07 MM

ALL DIMENSIONS SUBJECT TO 1/4" TOLERANCES

Jan 13, 2009 - 11:58am

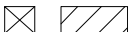
These drawings, concepts, and details contained herein are the original proprietary designs of NESPA ENTERPRISES, developed over many years of experience in the pool and spa industry and as such are protected by the copyright laws of the United States Government. Reproduction of any of the above without written permission to do so by NESPA ENTERPRISES, is illegal.

NESPA ENTERPRISES INC.
2800 Richter Ave. Ste. C Oroville, CA 95966
Office: (530) 534-9910 Fax: (530) 534-9915
E-Mail: sales@tiledspas.com Web Site: www.tiledspas.com



SIZE A	DWG NAME RESIDENTIAL SPA DETAILS	DWG TYPE Layout (10)
SCALE 3/8" = 1'	DATE 1/13/2009	SHEET PAGE 1 OF 1

**SKID SUPPORT
STRUCTURE* BONDED
TO SPA**



*SKIDS SUPPLIED
BY NESPA

(A) LIGHT NICHE



SPA BRIGHT, 120 V,
100 WATT, 50' CORD,
U.L. APPROVED

(D) SKIMMER



FRONT ACCESS
SKIMMER, NSF
APPROVED

(F) JET

HYDRO INLETS
1-1/2" WATER - 1-1/2" AIR
HYDROAIR #10-5100
COMPLIES W/ ANSI CODE ASME A112.19.8-07
UL APPROVED

(G) RETURN

INLET FITTINGS
1-1/2" WALL TYPE W/ EYEBALL
HYDROAIR #10-3500
COMPLIES W/ ANSI CODE ASME A112.19.8-07
UL APPROVED

(H) FILL

INLET FITTINGS
1-1/2" WALL TYPE W/ EYEBALL
HYDROAIR #10-3500
COMPLIES W/ ANSI CODE ASME A112.19.8-07
UL APPROVED

(L) SIDEWALL SUCTION



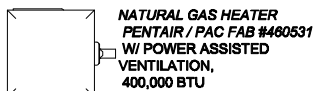
Paramount SDX 10"
HIGH FLOW SAFETY DRAIN
Area of Opening = 43.201 In/sq
Velocity @ 200 GPM = 1.485 fps
V.G.B Approved Safety Drain

(M) MAIN DRAIN



AquaStar 8AV, 8" Dia Frame,
Approved Max Flow Rate:
Floor = 88 GPM @ 3.2 fps
Wall = 70 GPM @ 2.6 fps
8.8 Sq In - Open Area
V.G.B Approved Safety Drain

(N) HEATER



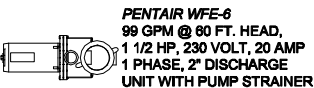
NATURAL GAS HEATER
PENTAIR / PAC FAB #480531
W/ POWER ASSISTED
VENTILATION,
400,000 BTU

(O) FILTER



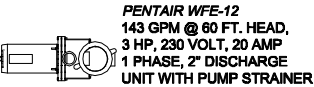
CARTRIDGE FILTER
PENTAIR/PAC FAB - CC200
200 SQ. FT. CLEAN &
CLEAR SERIES

**(P) SELF-PRIMING
PUMP AND MOTOR**

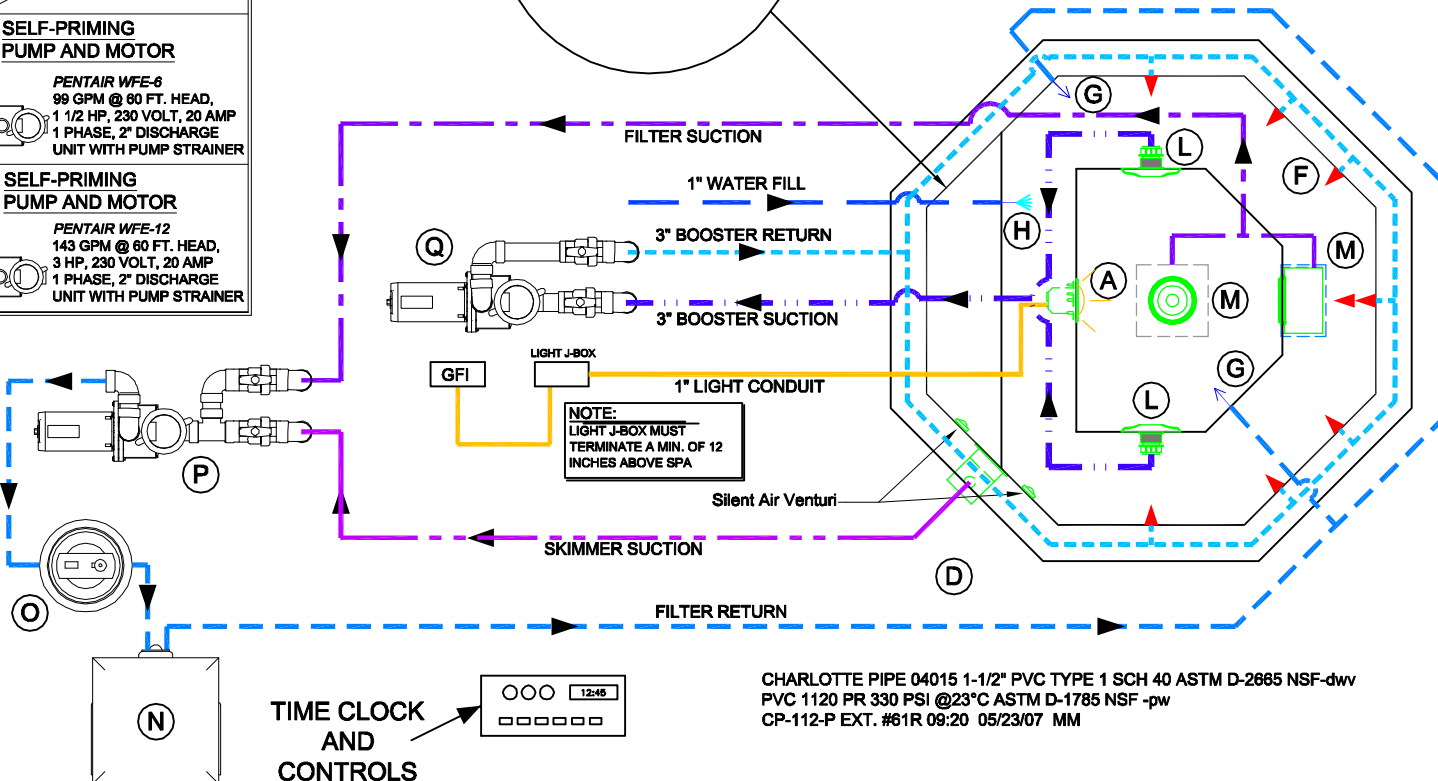
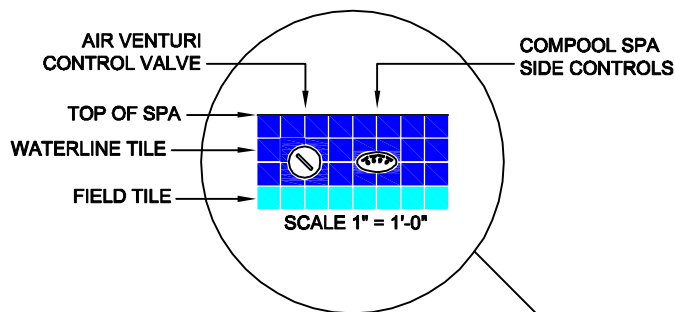


PENTAIR WFE-6
99 GPM @ 80 FT. HEAD,
1 1/2 HP, 230 VOLT, 20 AMP
1 PHASE, 2" DISCHARGE
UNIT WITH PUMP STRAINER

**(Q) SELF-PRIMING
PUMP AND MOTOR**



PENTAIR WFE-12
143 GPM @ 60 FT. HEAD,
3 HP, 230 VOLT, 20 AMP
1 PHASE, 2" DISCHARGE
UNIT WITH PUMP STRAINER



CHARLOTTE PIPE 04015 1-1/2" PVC TYPE 1 SCH 40 ASTM D-2865 NSF-dwv
PVC 1120 PR 330 PSI @23°C ASTM D-1785 NSF -pw
CP-112-P EXT. #81R 09:20 05/23/07 MM

ALL DIMENSIONS SUBJECT TO 1/4" TOLERANCES

Jan 13, 2009 - 11:58am

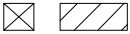
These drawings, concepts, and details contained herein are the original proprietary designs of NESPA ENTERPRISES, developed over many years of experience in the pool and spa industry and as such are protected by the copyright laws of the United States Government. Reproduction of any of the above without written permission to do so by NESPA ENTERPRISES, is illegal.

NESPA ENTERPRISES INC.
2800 Richter Ave. Ste. C Oroville, CA 95966
Office: (530) 534-9910 Fax: (530) 534-9915
E-Mail: sales@tiledspas.com Web Site: www.tiledspas.com



SIZE A	DWG NAME RESIDENTIAL SPA DETAILS	DWG TYPE Layout (11)
SCALE 3/8" = 1'	DATE 1/13/2009	SHEET PAGE 1 OF 1

SKID SUPPORT STRUCTURE* BONDED TO SPA



*SKIDS SUPPLIED BY NESPA

(A) LIGHT NICHE



SPA BRIGHT, 120 V, 100 WATT, 50' CORD, U.L. APPROVED

(D) SKIMMER



FRONT ACCESS SKIMMER, NSF APPROVED

(F) JET



HYDRO INLETS
1-1/2" WATER - 1-1/2" AIR
HYDROAIR #10-5100
COMPLIES W/ ANSI CODE ASME A112.19.8-07
UL APPROVED

(G) RETURN



INLET FITTINGS
1-1/2" WALL TYPE W/ EYEBALL
HYDROAIR #10-3500
COMPLIES W/ ANSI CODE ASME A112.19.8-07
UL APPROVED

(H) FILL



INLET FITTINGS
1-1/2" WALL TYPE W/ EYEBALL
HYDROAIR #10-3500
COMPLIES W/ ANSI CODE ASME A112.19.8-07
UL APPROVED

(M) MAIN DRAIN



AgueStar 32CDFLFR, 32" Channel Drain,
Approved Max Flow Rate: Floor = 236 GPM
@ 3.4 fps Wall = 136 GPM @ 1.9 fps
V.G.B Approved Safety Drain

(N) HEATER



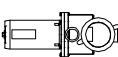
NATURAL GAS HEATER
PENTAIR / PAC FAB #460631
W/ POWER ASSISTED VENTILATION,
400,000 BTU

(O) FILTER

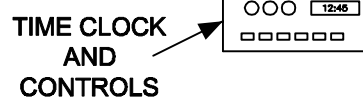
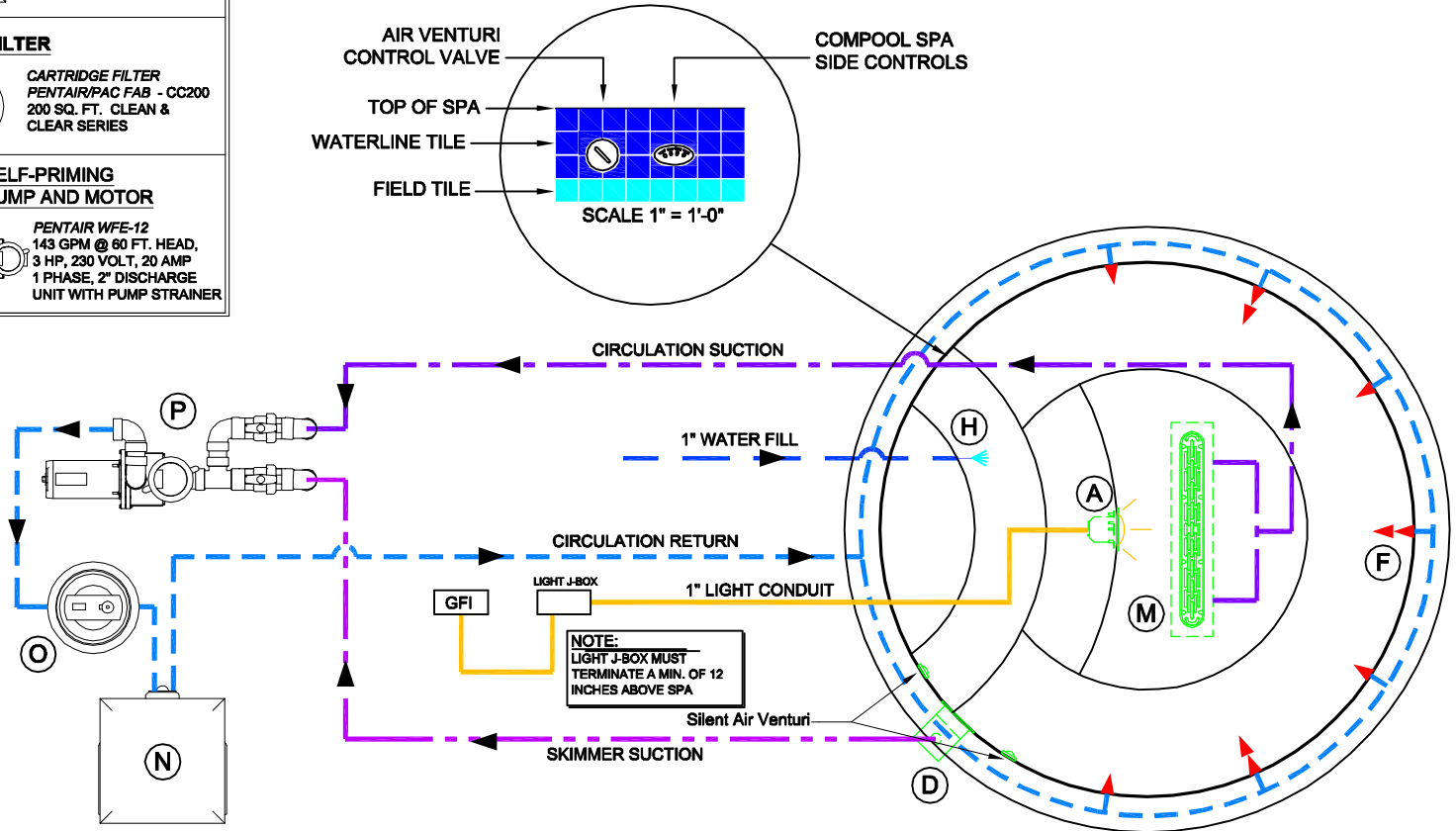


CARTRIDGE FILTER
PENTAIR/PAC FAB - CC200
200 SQ. FT. CLEAN & CLEAR SERIES

(P) SELF-PRIMING PUMP AND MOTOR



PENTAIR WFE-12
143 GPM @ 60 FT. HEAD,
3 HP, 230 VOLT, 20 AMP
1 PHASE, 2" DISCHARGE
UNIT WITH PUMP STRAINER



CHARLOTTE PIPE 04015 1-1/2" PVC TYPE 1 SCH 40 ASTM D-2665 NSF-dww
PVC 1120 PR 330 PSI @23°C ASTM D-1785 NSF -pw
CP-112-P EXT. #81R 09:20 05/23/07 MM

Jan 13, 2009 - 11:58am

ALL DIMENSIONS SUBJECT TO 1/4" TOLERANCES

These drawings, concepts, and details contained herein are the original proprietary designs of NESPA ENTERPRISES, developed over many years of experience in the pool and spa industry and as such are protected by the copyright laws of the United States Government. Reproduction of any of the above without written permission to do so by NESPA ENTERPRISES, is illegal.

NESPA ENTERPRISES INC.
2800 Richter Ave. Ste. C Oroville, CA 95966
Office: (530) 534-9910 Fax: (530) 534-9915
E-Mail: sales@tiledspas.com Web Site: www.tiledspas.com



SIZE A	DWG NAME RESIDENTIAL SPA DETAILS	DWG TYPE Layout (12)
SCALE 3/8" = 1'	DATE 1/13/2009	SHEET PAGE 1 OF 1