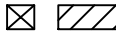
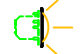








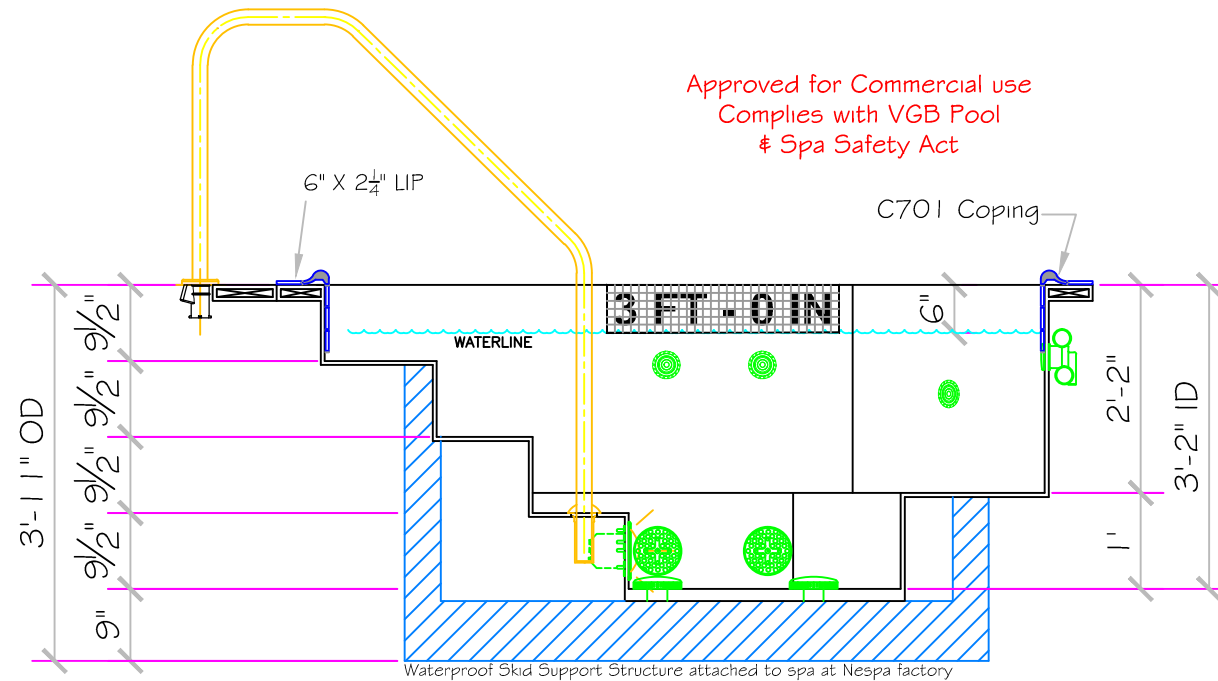
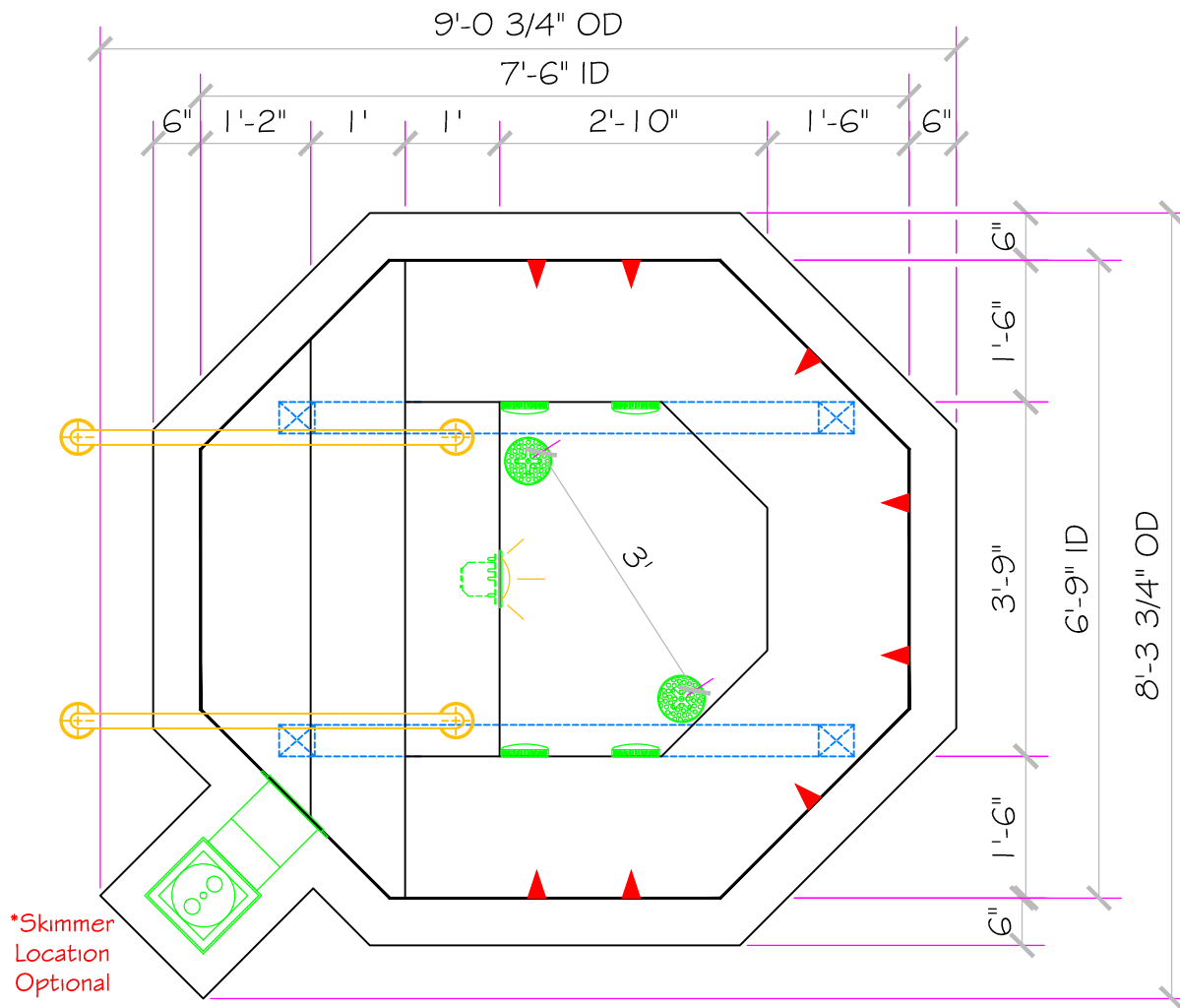
SPECIFICATIONS	
SHELL WEIGHT:	1900 LBS.
WATER WEIGHT:	4739 LBS.
TOTAL SHELL & WATER WEIGHT:	6639.4 LBS.
WATER VOLUME:	95 Cu.Ft.
WATER GALLONS:	711 GAL.
SURFACE AREA:	42.6 SQ. FT.
ICC ES LISTED #:	PMG-1161

NESPA ENTERPRISES, Inc.



ICC ES Listed  
PMG-1161

WATERPROOF SKID SUPPORT STRUCTURE ATTACHED TO SPA AT NESPA FACTORY	
	*SKIDS SUPPLIED BY NESPA
	<b>LIGHT NICHE</b> SPA BRIGHT, 120 V, 100 WATT, 50' CORD, U.L. APPROVED
	<b>SIDEWALL SUCTION</b> 6" Round Hockey Puck AquaStar 6HPH-Axxx Sumpless Suction Outlet Floor 177 GPM Wall 122 GPM Complies w/ ANSI / ASME A112.19.8 & NSF / ANSI 16-2011
	<b>EQUALIZER</b> 6" Round Hockey Puck AquaStar 6HPH-Axxx Sumpless Suction Outlet Floor 177 GPM Wall 122 GPM Complies w/ ANSI / ASME A112.19.8 & NSF / ANSI 16-2011
	<b>SKIMMER</b> HAYWARD SP-1084FVE SURFACE SKIMMER W/ EQUALIZERS, NSF / ANSI 50-2012
	<b>JET</b> HYDRO INLETS 1-1/2" WATER - 1-1/2" AIR HYDROAIR #10-5100 COMPLIES W/ ANSI CODE ASME A112.19.8-07 UL APPROVED
	<b>RETURN</b> INLET FITTINGS 1-1/2" WALL TYPE W/ EYEBALL HYDROAIR #10-3500 COMPLIES W/ ANSI CODE ASME A112.19.8-07 UL APPROVED
	<b>FILL</b> INLET FITTINGS 1-1/2" WALL TYPE W/ EYEBALL HYDROAIR #10-3500 COMPLIES W/ ANSI CODE ASME A112.19.8-07 UL APPROVED



Approved for Commercial use  
Complies with VGB Pool  
& Spa Safety Act

