

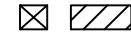
SPECIFICATIONS	
SHELL WEIGHT:	2000 LBS.
WATER WEIGHT:	6037 LBS.
TOTAL SHELL & WATER WEIGHT:	8036.5 LBS.
WATER VOLUME:	121 Cu.Ft.
WATER GALLONS:	905 GAL.
SURFACE AREA:	49.0 SQ. FT.
ICC ES LISTED #:	PMG-1161

NESPA ENTERPRISES, Inc.



ICC ES Listed
PMG-1161

WATERPROOF SKID SUPPORT
STRUCTURE ATTACHED TO
SPA AT NESPA FACTORY



*SKIDS SUPPLIED
BY NESPA

LIGHT NICHE



SPA BRIGHT, 120 V.,
100 WATT, 50' CORD,
U.L. APPROVED

SIDEWALL SUCTION



6" Round Hockey Puck
AquaStar 6HPHxxx
Sumpluss Suction Outlet
Floor 177 GPM
Wall 122 GPM
Complies w/
ANSI / ASME A112.19.8
& NSF / ANSI 16-2011

EQUALIZER



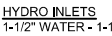
6" Round Hockey Puck
AquaStar 6HPHxxx
Sumpluss Suction Outlet
Floor 177 GPM
Wall 122 GPM
Complies w/
ANSI / ASME A112.19.8
& NSF / ANSI 16-2011

SKIMMER



HAYWARD SP-1084FVE
SURFACE SKIMMER
W/ EQUALIZERS,
NSF / ANSI 50 - 2012

JET



HYDRO INLETS
1-1/2" WATER - 1-1/2" AIR
HYDROAIR #10-5100
COMPLIES W/ ANSI CODE ASME A112.19.8-07
UL APPROVED

RETURN

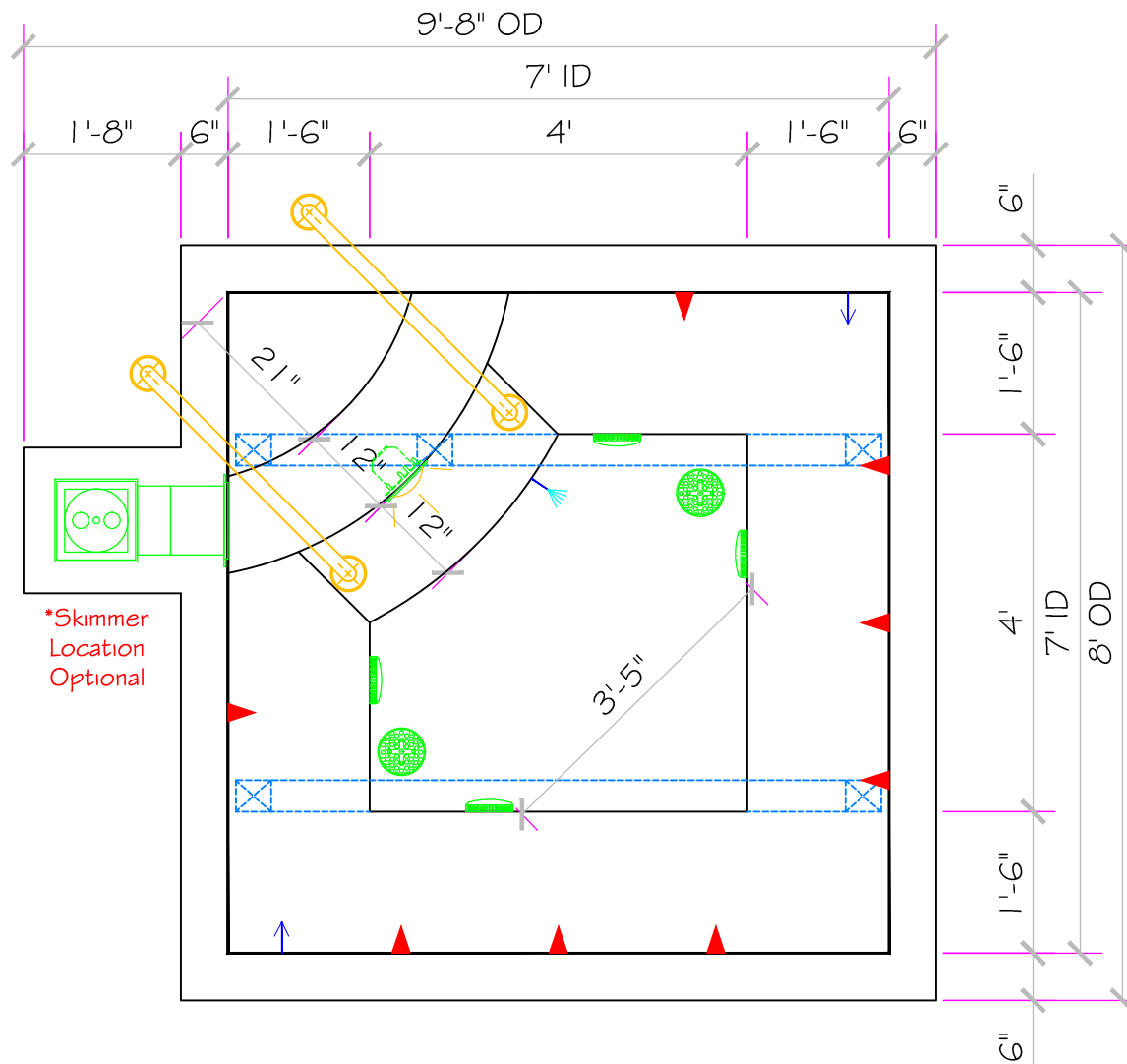


INLET FITTINGS
1-1/2" WALL TYPE W/ EYEBALL
HYDROAIR #10-3500
COMPLIES W/ ANSI CODE ASME A112.19.8-07
UL APPROVED

FILL



INLET FITTINGS
1-1/2" WALL TYPE W/ EYEBALL
HYDROAIR #10-3500
COMPLIES W/ ANSI CODE ASME A112.19.8-07
UL APPROVED



Approved for Commercial use
Complies with VGB Pool
& Spa Safety Act

