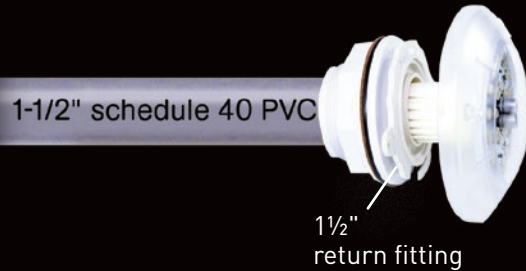


Why Nicheless?

EASY TO INSTALL

Jandy Pro Series Nicheless LED Lights require no bonding or traditional niches, making the installation process quick and simple. During construction, simply mount the light directly to the finished 1½" electrical conduit.



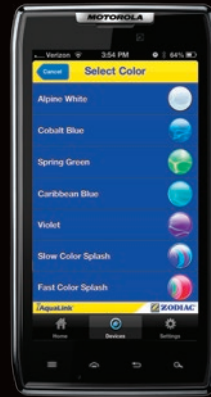
BRIGHTER, MORE EVEN LIGHTING

For even lighting with fewer hotspots, use multiple lower power lights instead of one high power light. Since the lights are less expensive, and no niches are required, installing more nicheless lights may even cost less than installing a smaller number of traditional lights.



EASY TO RETROFIT

Jandy Pro Series Nicheless Lights are the perfect retrofit for fiber optic replacement, especially when a 1½" return fitting is already in place.



iAquaLink™ Control

Control your lights anytime, anywhere. With iAquaLink, you can select colors and settings from virtually any web-connected smart device. To learn more, or to download the app, visit iAquaLink.com.

Jandy Pro Series Nicheless LED lights can also be controlled by any AquaLink® automation system.*

* AquaLink RS Firmware Rev R or newer
AquaLink PDA Firmware Rev 6 or newer

Jandy Pro Series Underwater Nicheless Lights

	Cord Length		
	50'	100'	150'
WaterColors (10w Max)	JLUC10-50	JLUC10-100	JLUC10-150
White Only (10w Max)	JLUW10-50	JLUW10-100	JLUW10-150
White Only (15w Max)	JLUW15-50	JLUW15-100	JLUW15-150
Blue Only (10w Max)	JLUB10-50	JLUB10-100	JLUB10-150
Blue Only (15w Max)	JLUB15-50	JLUB15-100	JLUB15-150

Zodiac Pool Systems, Inc.

2620 Commerce Way, Vista, CA 92081
1.800.822.7933 | www.ZodiacPoolSystems.com

Zodiac Pool Systems Canada, Inc.

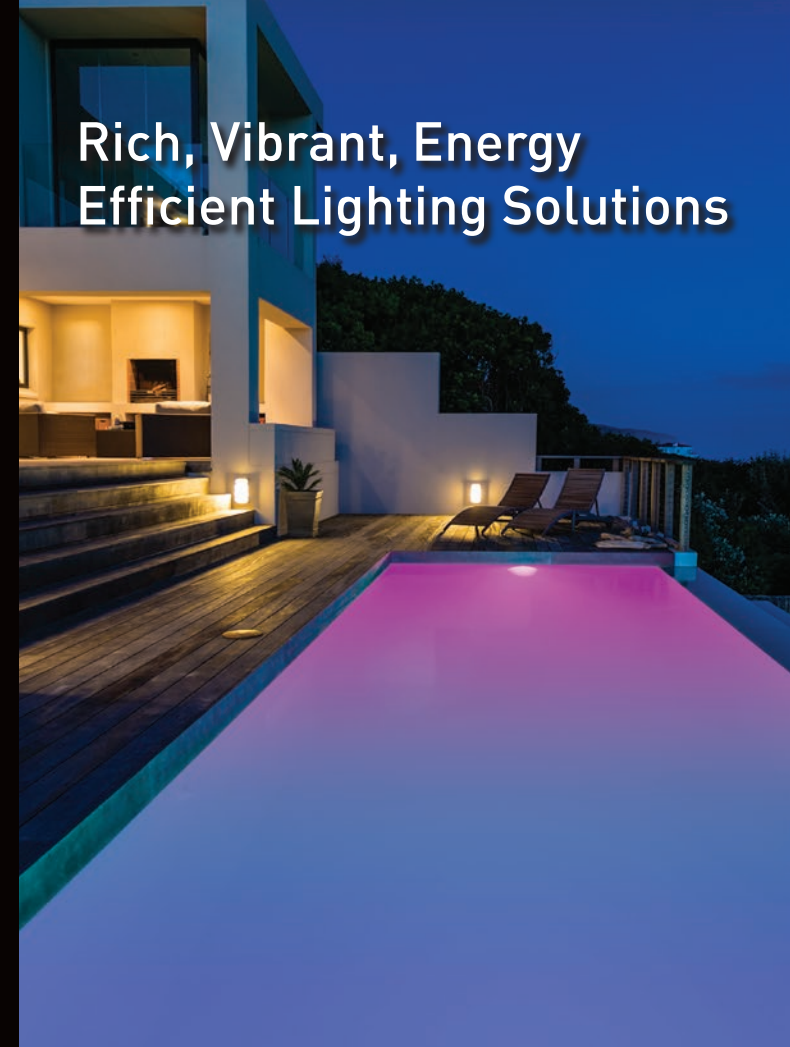
2115 South Service Road West
Unit #3, Oakville, ON L6L 5W2
1.888.647.4004 | www.ZodiacPoolSystems.ca

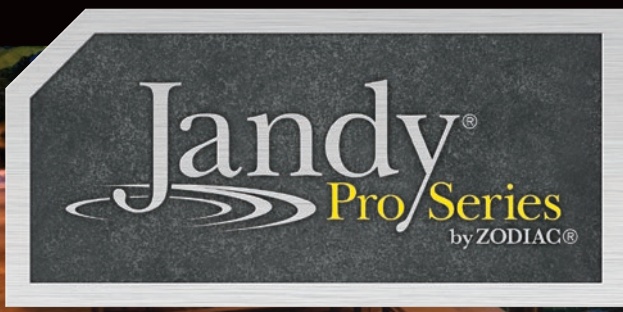
©2013 Zodiac Pool Systems, Inc. SL6501 Rev B 0813
ZODIAC® is a registered trademark of Zodiac International, S.A.S.U., used under license.
All other trademarks used herein are the property of their respective owners.



LED LIGHTS

Rich, Vibrant, Energy Efficient Lighting Solutions





LED LIGHTS



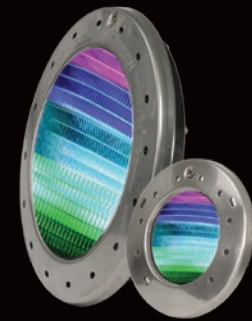
Nicheless LED

- » 9 vibrant colors & 5 light shows
- » Low voltage (12VAC)
- » 10W & 15W max power draw options
- » 100% non-metallic, no bonding required
- » Mounts directly to 1½" return fitting
- » Pure white light for the most efficient pool illumination (white only lights)
- » Deep blue lights create vivid illumination for dramatic effect



Standard LED

- » 9 colors & 5 light shows
- » 12VAC & 120V options
- » 50w max power draw
- » Stainless steel housings
- » Stainless & plastic niches available
- » ETL® listed for installation in ProNiche & other manufacturers' niches



Landscape & Environmental

- » Low voltage (12VAC)
- » Colors sync with the pool



Accessories

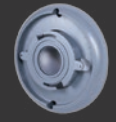
Pool Light Niche Cover

- » Adapts most pool niches
- » Mount 1 or 2 Nicheless LEDs
- » Colors: White, black, & grey (Light sold separately)



Spa Light Niche Cover

- » Adapts many spa niches
- » Colors: White, black, & grey (Light sold separately)



Trim Rings

- » For landscape & environmental lighting applications
- » Colors: White, black, grey, & red cedar



All Jandy Pro Series LED lights are iAquaLink™ compatible.

