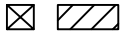


MAXIMA

ALL TILED SPA - Fits 5 Adults

SPECIFICATIONS	
SHELL WEIGHT:	1750 LBS.
WATER WEIGHT:	3449 LBS.
TOTAL SHELL & WATER WEIGHT:	5198.6 LBS.
WATER VOLUME:	70 Cu.Ft.
MAX WATER GAL:	524 GAL.
SURFACE AREA:	32.2 SQ. FT.
IAPMO#:	1138
FDA#:	2030305

SKID SUPPORT STRUCTURE* BONDED TO SPA



*SKIDS SUPPLIED BY NESPA

LIGHT NICHE



SPA BRIGHT, 120 V, 100 WATT, 50' CORD, U.L. APPROVED

MAIN DRAIN



6" Round Hockey Puck
Aquapro 6HPHAxxx
Sumplex Suction Outlet
Floor/Wall 224 GPM @ 6.3fps
Complies w/ ANSI Code
ASME A112.19.8-2007 & VGB 2008

SIDEWALL SUCTION



6" Round Hockey Puck
Aquapro 6HPHAxxx
Sumplex Suction Outlet
Floor/Wall 224 GPM @ 6.3fps
Complies w/ ANSI Code
ASME A112.19.8-2007 & VGB 2008

SKIMMER



FRONT ACCESS SKIMMER, NSF APPROVED

JET

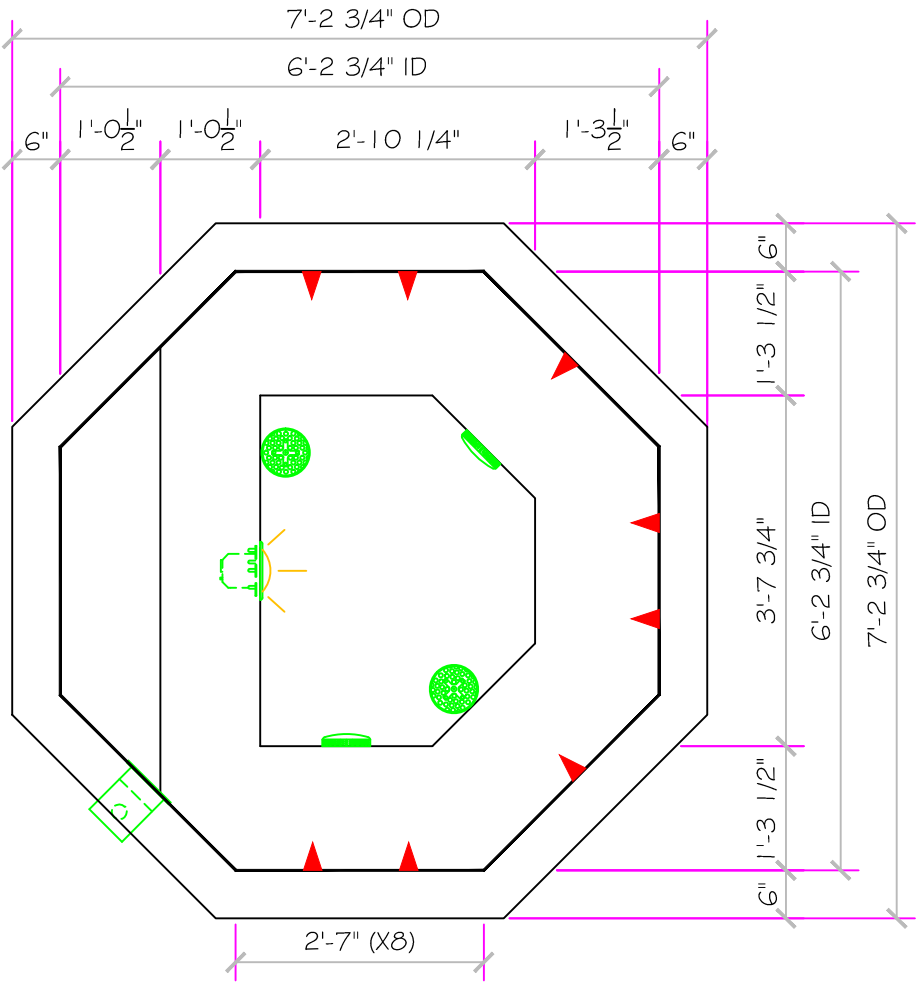
HYDRO INLETS
1-1/2" WATER - 1-1/2" AIR
HYDROAIR #10-5100
COMPLIES W/ ANSI CODE ASME A112.19.8-07
UL APPROVED

RETURN

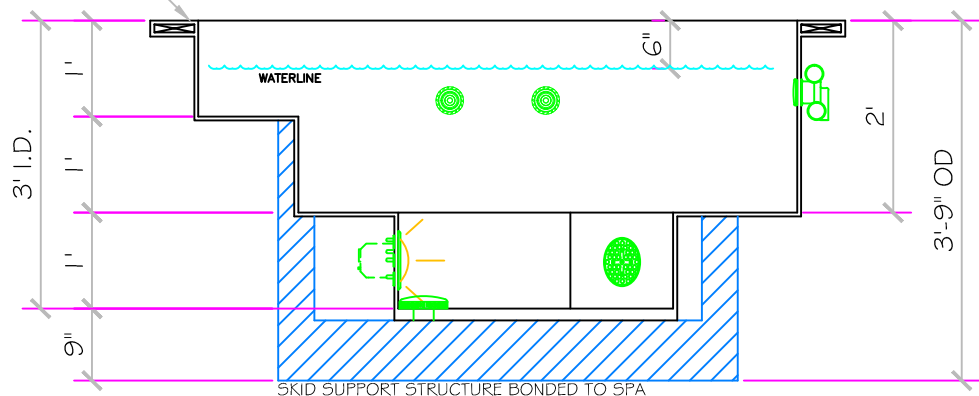
INLET FITTINGS
1-1/2" WALL TYPE W/ EYEBALL
HYDROAIR #10-3500
COMPLIES W/ ANSI CODE ASME A112.19.8-07
UL APPROVED

FILL

INLET FITTINGS
1-1/2" WALL TYPE W/ EYEBALL
HYDROAIR #10-3500
COMPLIES W/ ANSI CODE ASME A112.19.8-07
UL APPROVED



6" X 2 1/4" LIP

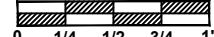


All drawing dimensions supplied by NESPA ENTERPRISES INC. are for reference only. All CAD files were created using AutoCAD file (*.dwg.) and were provided as a service to our customers using AutoCAD. Errors sometimes occur during this process and with software incompatibility upon opening a file. NESPA ENTERPRISES INC. and/or any authorized distributor of our products will not be held responsible for problems arising from files which have been converted and does not warranty the documents against deficiencies or typographical errors of any kind. We recommend that all measurements are verified with actual physical product before any custom fabrication in the field occurs.

NESPA ENTERPRISES INC.

2800 Richter Ave. Suite C Oroville, CA 95966
Office: (530) 534-9910 Fax: (530) 534-9915
E-Mail: jim@tiledspas.com Web Site: www.tiledspas.com

SCALE
1/2" = 1'



DWG TYPE

SD

DWG NAME RESIDENTIAL MODELS 2012

DATE 8/12/2012

SHEET PAGE 1 OF 1