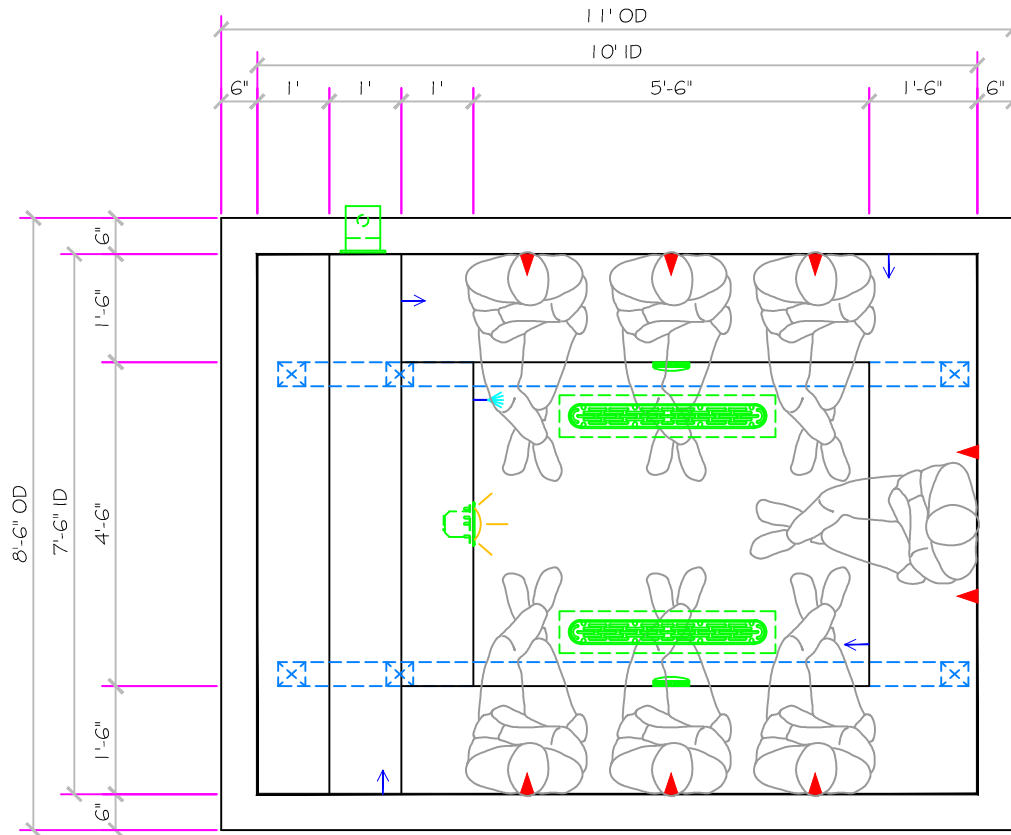


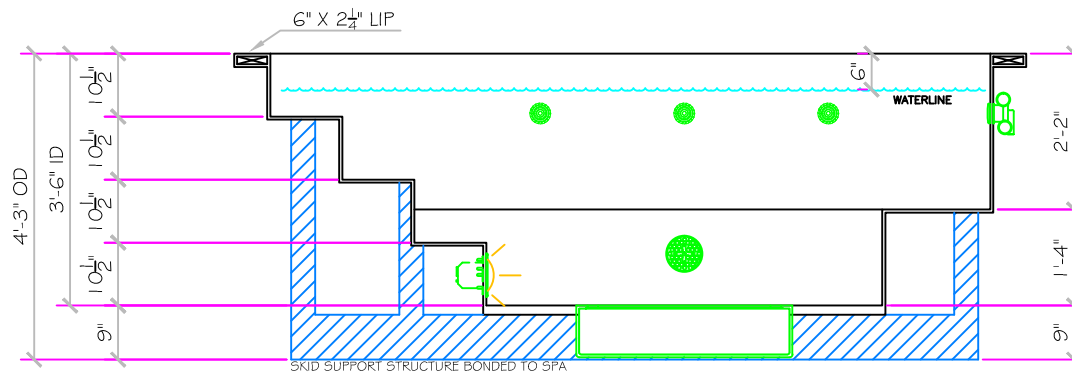
SPECIFICATIONS	
SHELL WEIGHT:	2600 LBS.
WATER WEIGHT:	8868 LBS.
TOTAL SHELL & WATER WEIGHT:	11467.7 LBS.
WATER VOLUME:	180 Cu.Ft.
MAX WATER GAL.:	1346 GAL.
SURFACE AREA:	75.0 SQ. FT.
IAPMO#:	1138
FDA#:	2030305

SKID SUPPORT STRUCTURE* BONDED TO SPA	
	*SKIDS SUPPLIED BY NESPA
LIGHT NICHE	
	SPA BRIGHT, 120 V, 100 WATT, 50' CORD, U.L. APPROVED
MAIN DRAIN	
	AquaStar 32CDLFR, 32" Channel Drain, Approved Max Flow Rate Floor = 236 GPM @ 3.4 fps Wall = 136 GPM @ 1.9 fps V.G.B Approved Safety Drain
SIDEWALL SUCTION	
	6" Round Hockey Puck Aquapro 6HPHAXXX Sumpless Suction Outlet Floor/Wall 224 GPM @ 6.3fps Complies w/ ANSI Code ASME A112.19.8-2007 & VGB 2008
SKIMMER	
	FRONT ACCESS SKIMMER, NSF APPROVED
JET	
	HYDRO INLETS 1-1/2" WATER - 1-1/2" AIR HYDROAIR #10-5100 COMPLIES W/ ANSI CODE ASME A112.19.8-07 UL APPROVED
RETURN	
	INLET FITTINGS 1-1/2" WALL TYPE W/ EYEBALL HYDROAIR #10-3500 COMPLIES W/ ANSI CODE ASME A112.19.8-07 UL APPROVED
FILL	
	INLET FITTINGS 1-1/2" WALL TYPE W/ EYEBALL HYDROAIR #10-3500 COMPLIES W/ ANSI CODE ASME A112.19.8-07 UL APPROVED



10' LEGACY

ALL TILED SPA - Fits 7 Adults



NESPA ENTERPRISES INC.

2800 Richter Ave. Ste. C Oroville, CA 95966

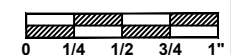
Office: (530) 534-9910

Fax: (530) 534-9915

E-Mail: jim@tiledspas.com Web Site: www.tiledspas.com



SCALE
3/8" = 1'



DWG TYPE
SD3

DWG NAME
RESIDENTIAL MODELS 2013

DATE
3/15/2013

SHEET
PAGE 1 OF 1