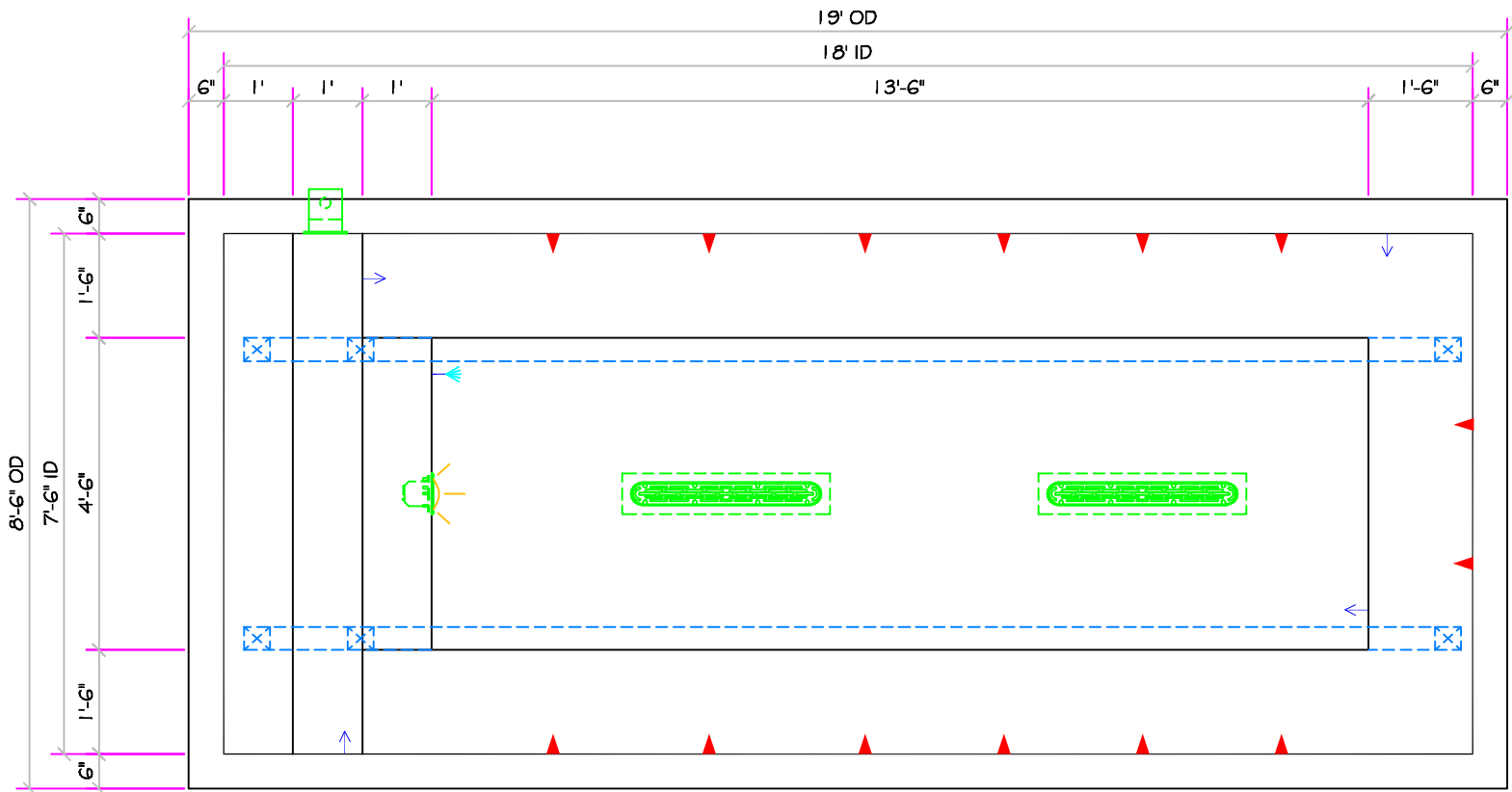


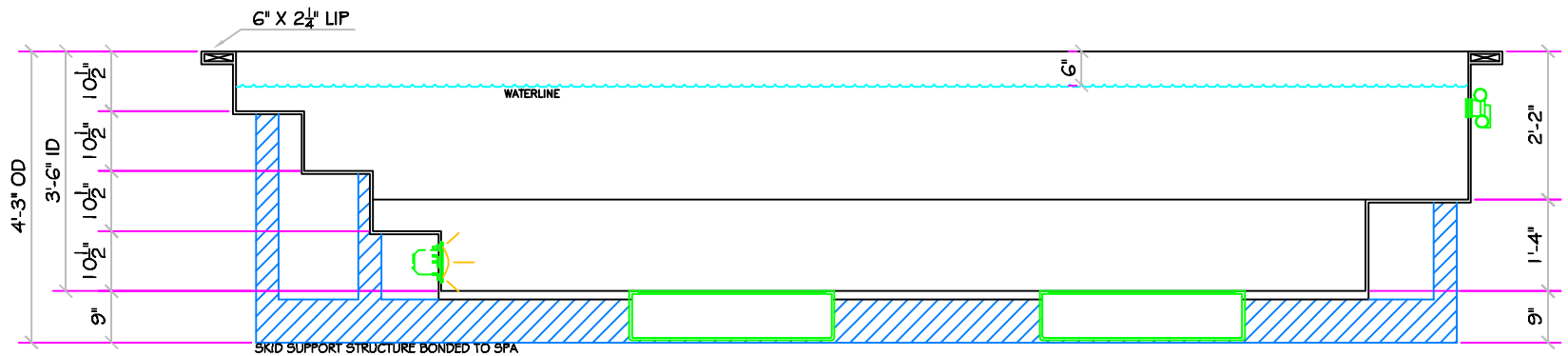
SPECIFICATIONS	
DRY WEIGHT:	3600
TOTAL WEIGHT:	25489
WATER:	2625
VOLUME:	351
WEIGHT:	21889
SURFACE AREA:	135 SQ. FT.
IAPMO#:	1138
FDA#:	2030305

SKID SUPPORT STRUCTURE* BONDED TO SPA	
	*SKIDS SUPPLIED BY NESPA
LIGHT NICHE	
	SPA BRIGHT, 120 V, 100 WATT, 50 CORD, U.L. APPROVED
SKIMMER	
	HAYWARD SP-1084FVE SURFACE SKIMMER W/ EQUALIZER NSF APPROVED
MAIN DRAIN	
	AquaStar 32CDFLFR, 32" Channel Drain, Approved Max Flow Rate/Floor = 236 GPM @ 3.4 fpm Wall = 136 GPM @ 1.9 fpm V.G.B. Approved Safety Drain
SIDEWALL SUCTION	
	Paramount SDX 107 HIGH FLOW SAFETY DRAIN Area of Opening = 43.201 in ² Velocity @ 200 GPM = 1.425 fpm V.G.B. Approved Safety Drain
JET	
	HYDRO INLETS 1-1/2" WATER - 1-1/2" AIR HYDROAIR #10-3500 COMPLIES W/ ANSI CODE ASME A112.19.8-07 UL APPROVED
RETURN	
	INLET FITTINGS 1-1/2" WALL TYPE W/EYEBALL HYDROAIR #10-3500 COMPLIES W/ ANSI CODE ASME A112.19.8-07 UL APPROVED
FILL	
	INLET FITTINGS 1-1/2" WALL TYPE W/EYEBALL HYDROAIR #10-3500 COMPLIES W/ ANSI CODE ASME A112.19.8-07 UL APPROVED



18' LEGACY
ALL TILED SPA - Fits 13 Adults

*** Complies with V.G.B. Pool and Spa Safety Act**



ALL DIMENSIONS SUBJECT TO 1/4" TOLERANCES

Oct 12, 2009 - 11:20am

These drawings, concepts, and details contained herein are the original proprietary designs of NESPA ENTERPRISES, developed over many years of experience in the pool and spa industry and as such are protected by the copyright laws of the United States Government. Reproduction of any of the above without written permission to do so by NESPA ENTERPRISES, is illegal.

NESPA ENTERPRISES INC.
2800 Richter Ave. Ste. C Oroville, CA 95966
Office: (530) 534-9910 Fax: (530) 534-9915
E-Mail: sales@tiledspas.com Web Site: www.tiledspas.com



SIZE A	DWG NAME NESPA_IAPMO_MODELS	DWG TYPE 18' LEGACY
SCALE 3/8" = 1'	DATE 10/12/2009	SHEET PAGE 1 OF 1