

SPECIFICATIONS	
DRY WEIGHT:	3850
TOTAL WEIGHT:	28670
WATER:	2977
VOLUME:	398
WEIGHT:	24820
SURFACE AREA:	150 SQ. FT.
IAPMO#:	1138
FDA#:	2030305

**SKID SUPPORT STRUCTURE\* BONDED TO SPA**

\*SKIDS SUPPLIED BY NESPA

**LIGHT NICHE**

SPA BRIGHT, 120 V, 100 WATT, 50' CORD, U.L. APPROVED

**SKIMMER**

HAYWARD SP-1084FVE SURFACE SKIMMER W/ EQUALIZER, NSF APPROVED

**MAIN DRAIN**

AquaStar 32CDFLFR, 32" Channel Drain, Approved Max Flow Rate: Floor = 236 GPM @ 3.4 fpm, Wall = 136 GPM @ 1.9 fpm, V.G.B Approved, Safety Drain

**SIDEWALL SUCTION**

Paramount SDX 10" HIGH FLOW SAFETY DRAIN, Area of Opening = 43.201 in<sup>2</sup>, Velocity @ 200 GPM = 1.485 fpm, V.G.B Approved, Safety Drain

**JET**

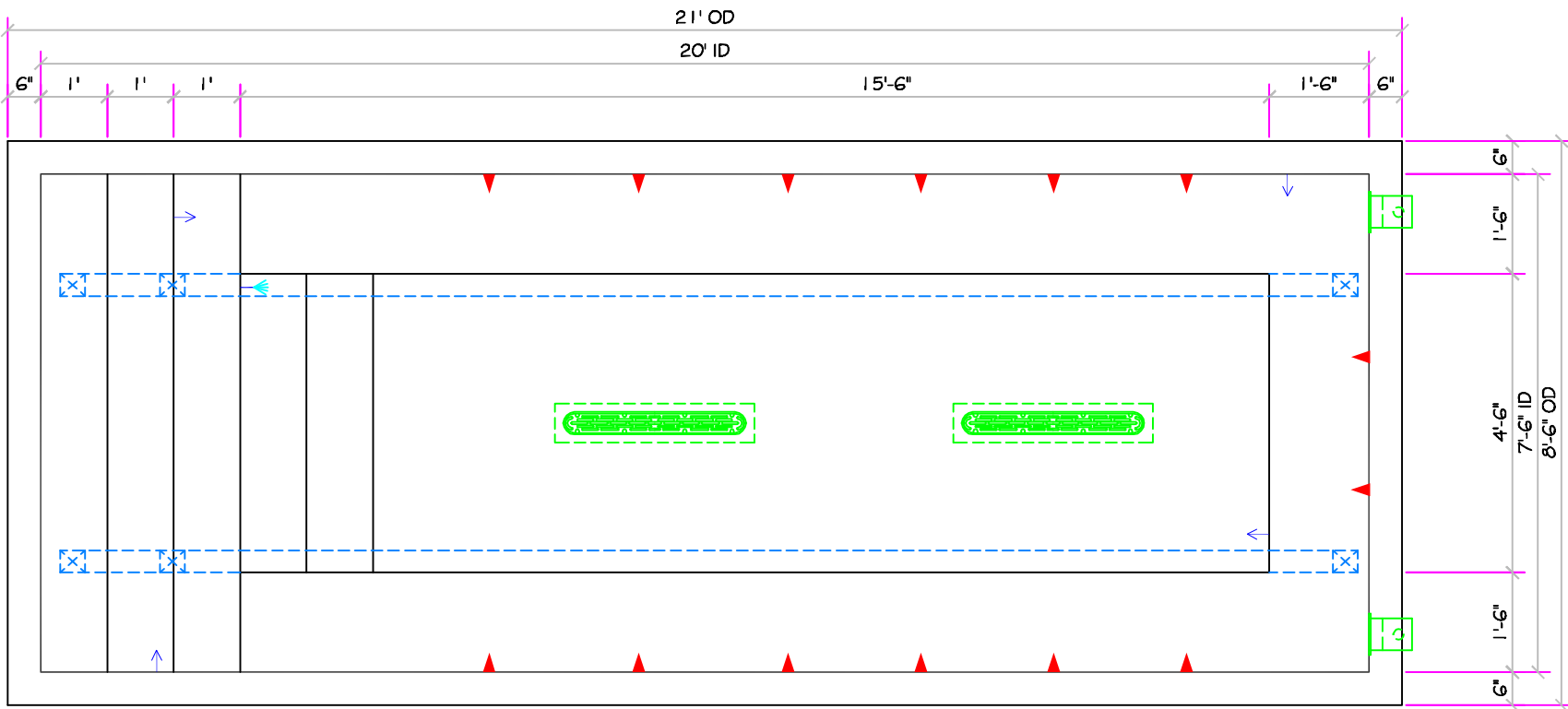
HYDRO INLETS, 1-1/2" WATER - 1-1/2" AIR, HYDROAIR #10-3500, COMPLIES W/ ANSI CODE ASME A112.19.8-07, UL APPROVED

**RETURN**

INLET FITTINGS, 1-1/2" WALL TYPE W/ EYEBALL, HYDROAIR #10-3500, COMPLIES W/ ANSI CODE ASME A112.19.8-07, UL APPROVED

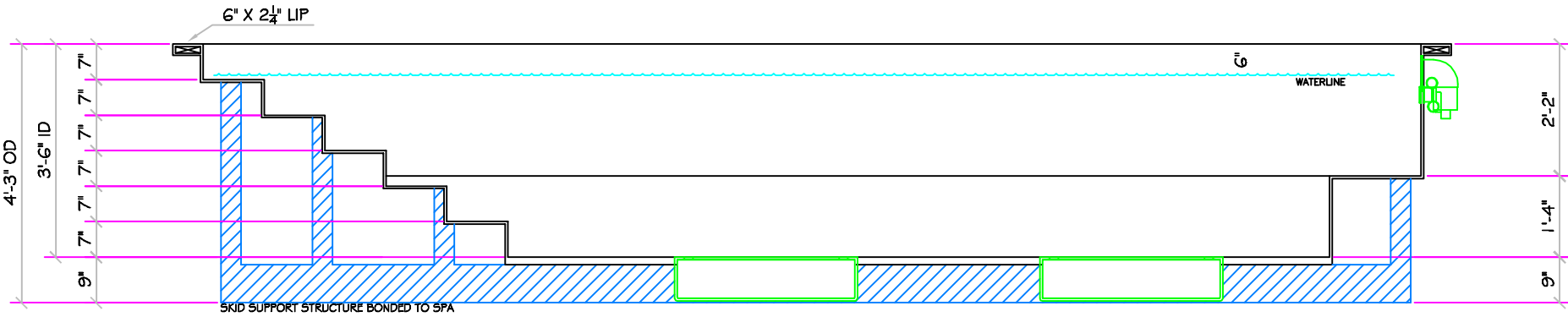
**FILL**

INLET FITTINGS, 1-1/2" WALL TYPE W/ EYEBALL, HYDROAIR #10-3500, COMPLIES W/ ANSI CODE ASME A112.19.8-07, UL APPROVED



**20' LEGACY**  
ALL TILED SPA - Fits 15 Adults

**\* Complies with V.G.B. Pool and Spa Safety Act**



\*ALL DIMENSIONS SUBJECT TO 1/4" TOLERANCES\*

Oct 12, 2009 - 11:20am

These drawings, concepts, and details contained herein are the original proprietary designs of NESPA ENTERPRISES, developed over many years of experience in the pool and spa industry and as such are protected by the copyright laws of the United States Government. Reproduction of any of the above without written permission to do so by NESPA ENTERPRISES, is illegal.

**NESPA ENTERPRISES INC.**  
2800 Richter Ave. Ste. C Oroville, CA 95966  
Office: (530) 534-9910 Fax: (530) 534-9915  
E-Mail: [sales@tiledspas.com](mailto:sales@tiledspas.com) Web Site: [www.tiledspas.com](http://www.tiledspas.com)



SIZE <b>A</b>	DWG NAME <b>NESPA_IAPMO_MODELS</b>	DWG TYPE <b>20' LEGACY</b>
SCALE <b>3/8" = 1'</b>	DATE <b>10/12/2009</b>	SHEET <b>PAGE 1 OF 1</b>